

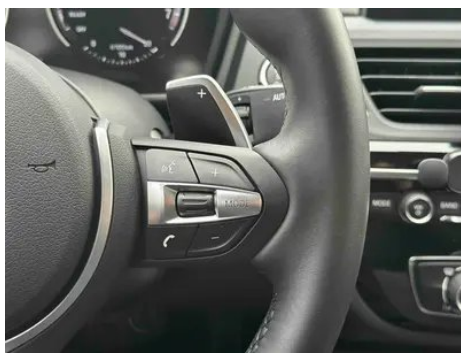
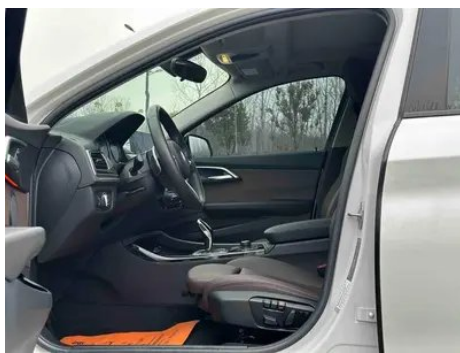
Vehicle Detail Report

BMW 1 Series 2020 125i Leading Type M Sports suit

Basic Information

Brand	BMW
Mileage	22,000 km
Color	White
First Registration	2020-06-01
Transfer Count	0

Vehicle Images





Vehicle Condition

1. Original metal body panels with factory paint.

Configuration Information

Model Information

Model Name	BMW 1 Series 2020 125i Leading Type M Sports suit
Launch Date	2019.10

Basic parameters

Vehicle Class	compact car
Energy Type	Gasoline
Maximum Power (kW)	141
Maximum Torque (N·m)	280

Basic parameters (continued)

Transmission	7-speed wet dual-clutch
Body Type	Sedan
Engine	2.0L 192 hp L4
Dimensions (L×W×H) (mm)	4462*1803*1448
Official 0-100 km/h Acceleration (s)	7.5
Top Speed (km/h)	235
Curb Weight (kg)	-
Maximum Gross Weight (kg)	-
NEDC Combined Fuel Consumption (L/100km)	5.8

engine

Engine Model	B48A20C
Displacement (mL)	1998
Displacement (L)	2.0
Induction Type	Turbocharging
Cylinder Arrangement	L
Number of Cylinders	4
Valves per Cylinder	4
Valve Train	DOHC
Maximum Power (PS)	192
Max Power Speed (rpm)	5000-6000
Max Torque Speed (rpm)	1350-4600
Maximum net power (kW)	141
Fuel Grade	95.
Fuel Delivery System	Direct injection
Cylinder Head Material	Aluminum alloy
Cylinder Block Material	Aluminum alloy
Engine layout	Horizontal

Screen/System

Central control color screen	<ul style="list-style-type: none">• Touch LCD screen
Infotainment Screen Size	<ul style="list-style-type: none">• 8.8 inches
Bluetooth/In-car Phone	<ul style="list-style-type: none">•

Screen/System (continued)

Smartphone Integration/ Mirroring	○ Supports CarPlay (USD 132)
Voice recognition control system	• Multimedia system; ○ Navigation; • Phone

Body

Length (mm)	4462
Width (mm)	1803
Height (mm)	1448
Wheelbase (mm)	2670
Front Track (mm)	1553
Rear Track (mm)	1555
Door Opening Type	swing door
Number of Doors	4
Number of Seats	5
Fuel Tank Capacity (L)	50
Trunk volume (L)	-
Drag Coefficient (Cd)	-
Approach Angle (°)	15
Departure Angle (°)	19

Gearbox

Abbreviation	7-speed wet dual-clutch
Number of Gears	7
Transmission Type	Wet Dual-Clutch Transmission (DCT)

Chassis steering

Drive Type	Front-engine, Front-wheel drive (FF)
Front Suspension Type	MacPherson independent suspension
Rear Suspension Type	Multi-link independent suspension
Power Steering Type	Electric power assistance
Vehicle structure	bearing type

Seat Configuration

Seat Material	• Imitation leather
Main seat adjustment	• Front-to-back adjustment; • Backrest adjustment; • Height adjustment (2-way); • Leg rest adjustment

Seat Configuration (continued)

Co-seat adjustment method	<ul style="list-style-type: none">• Front-to-back adjustment;• Backrest adjustment;• Height adjustment (2-way);• Leg rest adjustment
Electric adjustment of driver's seat and passenger seat	Main/Deputy-
Front seat functions	<input type="radio"/> Heating (USD 397)
Electric seat memory function	<ul style="list-style-type: none">• Driving position
Front passenger seat rear adjustable buttons	-
Front/rear center armrest	Front •/Rear-
Rear cup holder	-

Active safety

Anti-lock Braking System (ABS)	<ul style="list-style-type: none">•
Electronic Brakeforce Distribution (EBD/CBC)	<ul style="list-style-type: none">•
Brake Assist System (EBA/BAS/BA)	<ul style="list-style-type: none">•
Traction Control System (ASR/TCS/TRC)	<ul style="list-style-type: none">•
Electronic Stability Control (ESC/ESP/DSC)	<ul style="list-style-type: none">•
Tire Pressure Monitoring System (TPMS)	<ul style="list-style-type: none">• Tire pressure display
Seat Belt Reminder	<ul style="list-style-type: none">• Front row
ISOFIX Child Seat Anchors	<ul style="list-style-type: none">•
Lane Departure Warning System (LDWS)	<input type="radio"/>
Autonomous Emergency Braking (AEB)	-
Driver Fatigue Detection	-
Emergency Call System (eCall)	<ul style="list-style-type: none">•

Air conditioning/refrigerator

Air conditioning temperature control method	<ul style="list-style-type: none">• Manual air conditioning
Rear Independent Climate Control	-

Air conditioning/refrigerator (continued)

Rear seat air vents	-
Temperature zone control	-
Car air purifier	-
In-cabin PM2.5 Filter	-

Passive safety

Driver/passenger airbag	Main •/Deputy •
Front/rear side airbags	Front •/Rear-
Front/rear head airbags (curtain airbags)	Front •/Rear •
Run-flat tires	•

Wheel brake

Front Brake Type	Ventilation disc
Rear Brake Type	Disc
Parking brake type	Electronic Parking
Front Tire Size	225/40 R18
Rear Tire Size	225/40 R18
Spare Tire Size	None

Audio/Interior Lighting

Number of speakers	• 6 speakers
Interior ambient lighting	• Two colors

Driving functions

Navigation traffic information display	○
Lane assist	○
Lane Keeping Assist System	-
Cruise control system	○Cruise Control (USD 338)
Satellite navigation system	○
Parking Assist	○(USD 426)

Exterior lighting

Low beam light source	•LED
High beam light source	•LED
LED daytime running lights	•
Adaptive high and low beam	-

Exterior lighting (continued)

Automatic headlights	•
Height-adjustable headlights	•
Headlight Delay Off	•

Exterior mirrors

Exterior mirror function	• Electric adjustment; ○ Electric folding; ○ Mirror memory function; ○ Heated mirrors; ○ Automatic downfolding on reverse
---------------------------------	---

Appearance/anti-theft

Rim material	• Aluminum alloy
Electric trunk	-
Electronic engine immobilizer	•
Central locking system in the car	•
Key Type	• Remote key
Keyless start system	•
Keyless entry function	○ Front row (USD 441)
Appearance Kit	• Sports style
Hands-free Trunk	○

Skylight/Glass

Sunroof Type	• Openable panoramic sunroof
Front/rear electric windows	Front •/Rear •
One-touch window lifting function	• Full car
Window anti-pinch function	•
Car makeup mirror	• Main driver's lamp; • co-pilot's lamp
Rear wiper	-
Rain sensor wiper function	• Rainfall-sensing

Interior and exterior color

Exterior Color	Ore white:#E7E7E7; Estolan:#1559AC; Cashmi silver:#C6C1B4; Melbourne red:#610303; Dawn gold:#BF8D32
-----------------------	--

Interior and exterior color (continued)

Interior Color	Black/mocha:#000000/#423534; Black:#000000
-----------------------	---

Steering wheel/interior mirror

Steering Wheel Material	• Leather
Steering wheel position adjustment	• Manual up and down front and rear adjustment
Multi-function steering wheel	•
Heated Steering Wheel	-
Steering wheel memory	-
Trip computer display screen	• Color
Full LCD instrument panel	-
Interior rearview mirror function	• Manual anti-glare
HUD Head Up Digital Display	○
Steering Wheel Shift Paddles	•

Intelligent configuration

Connected Car Services	○
OTA Updates	-

Driving Control

Driving mode switch	• Sport; • Economy; • Standard/Comfort
Automatic parking	-
Hill start assist	•
Engine start-stop technology	•

Driving Hardware

Front/rear parking radar	Front ○/Rear •
Driving Assistance Camera System	• Reversing image

In-car charging

Multimedia/charging port	•USB;•Type-C
Number of USB/Type-C ports	• 2 in the front row/2 in the back row

Optional Package

Optional Package (continued)

Optional Package	
	Automatic Parking Assist Package (USD 426; includes: Automatic Parking Assist System, front and rear parking distance warning system). BMW Navigation System and BMW Standard ConnectedDrive Package (USD 1,471; includes: BMW Navigation System, Real-Time Traffic Information, and Remote Assistance Services). BMW Enhanced Navigation System and BMW Enhanced ConnectedDrive Package 1 (USD 3,824; includes: BMW Enhanced Navigation System with full-color head-up display, ConnectedDrive Services, Remote Assistance, Real-Time Traffic Information, and Trip Counsel).

"●" = Standard equipment

"-" = Not available

"○" = Optional equipment.

Note: These are Chinese market vehicles. Warranty coverage is not available outside of China.