

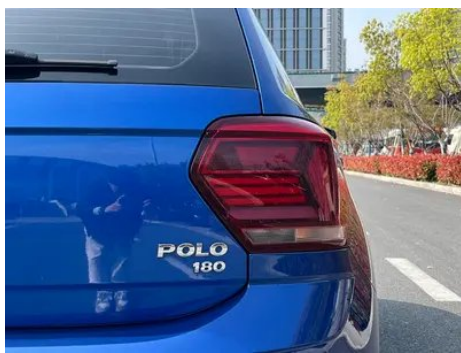
# Vehicle Detail Report

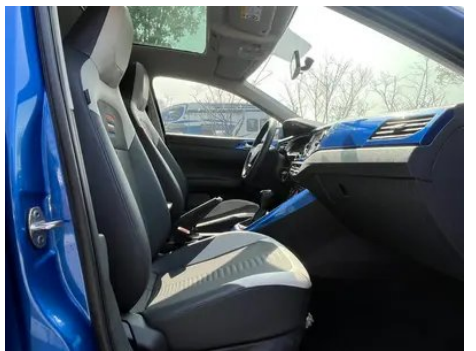
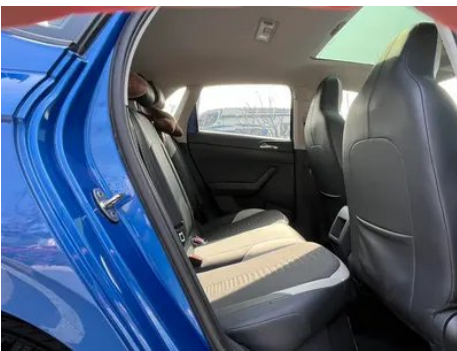
## Volkswagen Polo 2019 Plus 1.5L Automatic Colorful Technology Edition

### Basic Information

Brand	Volkswagen
Mileage	34,600 km
Color	Blue
First Registration	2020-12-01
Transfer Count	0

### Vehicle Images







## Vehicle Condition

1. Radiator support, Signs of removal.
2. Left rear quarter panel, Paint repair.
3. Right rear quarter panel, Paint repair.

## Configuration Information

### Model Information

<b>Model Name</b>	Polo 2019 Plus 1.5L Automatic Colorful Tech Edition
<b>Launch Date</b>	2019.06

### Basic parameters

<b>Vehicle Class</b>	Small car
<b>Energy Type</b>	Gasoline
<b>Maximum Power (kW)</b>	83
<b>Maximum Torque (N·m)</b>	145
<b>Transmission</b>	6-speed manual integration
<b>Body Type</b>	Hatchback
<b>Engine</b>	1.5L 113 horsepower L4
<b>Dimensions (L×W×H) (mm)</b>	4053*1740*1449
<b>Official 0-100 km/h Acceleration (s)</b>	13
<b>Top Speed (km/h)</b>	185
<b>Curb Weight (kg)</b>	1190
<b>Maximum Gross Weight (kg)</b>	-
<b>NEDC Combined Fuel Consumption (L/100km)</b>	5.5

### engine

<b>Engine Model</b>	EA211-DMB
<b>Displacement (mL)</b>	1498
<b>Displacement (L)</b>	1.5
<b>Induction Type</b>	Natural aspiration
<b>Cylinder Arrangement</b>	L

## engine (continued)

<b>Number of Cylinders</b>	4
<b>Valves per Cylinder</b>	4
<b>Valve Train</b>	DOHC
<b>Maximum Power (PS)</b>	113
<b>Max Power Speed (rpm)</b>	6000
<b>Max Torque Speed (rpm)</b>	3900
<b>Maximum net power (kW)</b>	83
<b>Fuel Grade</b>	92.
<b>Fuel Delivery System</b>	Multi-point EFI
<b>Cylinder Head Material</b>	Aluminum alloy
<b>Cylinder Block Material</b>	Aluminum alloy
<b>Engine layout</b>	Horizontal

## Screen/System

<b>Central control color screen</b>	<ul style="list-style-type: none"><li>• Touch LCD screen</li></ul>
<b>Infotainment Screen Size</b>	<ul style="list-style-type: none"><li>•6.5 inches</li></ul>
<b>Bluetooth/In-car Phone</b>	<ul style="list-style-type: none"><li>•</li></ul>
<b>Smartphone Integration/ Mirroring</b>	<ul style="list-style-type: none"><li>• Support CarPlay;</li><li>• Support CarLife;</li><li>• Factory interconnection/ mapping</li></ul>

## Body

<b>Length (mm)</b>	4053
<b>Width (mm)</b>	1740
<b>Height (mm)</b>	1449
<b>Wheelbase (mm)</b>	2564
<b>Front Track (mm)</b>	1522
<b>Rear Track (mm)</b>	1506
<b>Door Opening Type</b>	swing door
<b>Number of Doors</b>	5
<b>Number of Seats</b>	5
<b>Fuel Tank Capacity (L)</b>	42.5
<b>Trunk volume (L)</b>	310-1003
<b>Drag Coefficient (Cd)</b>	-
<b>Approach Angle (°)</b>	15
<b>Departure Angle (°)</b>	20

## Gearbox

<b>Abbreviation</b>	6-speed manual integration
<b>Number of Gears</b>	6
<b>Transmission Type</b>	Automatic Transmission with Manual Mode (AT)

## Chassis steering

<b>Drive Type</b>	Front-engine, Front-wheel drive (FF)
<b>Front Suspension Type</b>	MacPherson independent suspension
<b>Rear Suspension Type</b>	Torsion beam non-independent suspension
<b>Power Steering Type</b>	Electric power assistance
<b>Vehicle structure</b>	bearing type

## Seat Configuration

<b>Seat Material</b>	<ul style="list-style-type: none"><li>• Leather/fabric mix-and-match</li></ul>
<b>Main seat adjustment</b>	<ul style="list-style-type: none"><li>• Front and rear adjustment;</li><li>• Backrest adjustment;</li><li>• Height adjustment (2-way)</li></ul>
<b>Co-seat adjustment method</b>	<ul style="list-style-type: none"><li>• Front and rear adjustment;</li><li>• Backrest adjustment</li></ul>
<b>Electric adjustment of driver's seat and passenger seat</b>	-
<b>Front passenger seat rear adjustable buttons</b>	-
<b>Rear seat folding</b>	<ul style="list-style-type: none"><li>• Overall down</li></ul>
<b>Front/rear center armrest</b>	Front •/Rear-
<b>Rear cup holder</b>	-

## Active safety

<b>Anti-lock Braking System (ABS)</b>	<ul style="list-style-type: none"><li>•</li></ul>
<b>Electronic Brakeforce Distribution (EBD/CBC)</b>	<ul style="list-style-type: none"><li>•</li></ul>
<b>Brake Assist System (EBA/BAS/BA)</b>	<ul style="list-style-type: none"><li>•</li></ul>
<b>Traction Control System (ASR/TCS/TRC)</b>	<ul style="list-style-type: none"><li>•</li></ul>
<b>Electronic Stability Control (ESC/ESP/DSC)</b>	<ul style="list-style-type: none"><li>•</li></ul>
<b>Tire Pressure Monitoring System (TPMS)</b>	<ul style="list-style-type: none"><li>• Tire pressure alarm</li></ul>

## Active safety (continued)

<b>Seat Belt Reminder</b>	• Full car
<b>ISOFIX Child Seat Anchors</b>	•
<b>Lane Departure Warning System (LDWS)</b>	-
<b>Autonomous Emergency Braking (AEB)</b>	•
<b>Driver Fatigue Detection</b>	-

## Air conditioning/refrigerator

<b>Air conditioning temperature control method</b>	• Manual air conditioning
<b>Rear Independent Climate Control</b>	-
<b>Rear seat air vents</b>	-
<b>Temperature zone control</b>	-
<b>Car air purifier</b>	-
<b>In-cabin PM2.5 Filter</b>	•

## Passive safety

<b>Driver/passenger airbag</b>	Main •/Deputy •
<b>Front/rear side airbags</b>	Front •/Rear-
<b>Front/rear head airbags (curtain airbags)</b>	Front •/Rear •

## Wheel brake

<b>Front Brake Type</b>	Ventilation disc
<b>Rear Brake Type</b>	Drum type
<b>Parking brake type</b>	handbrake
<b>Front Tire Size</b>	185/65 R15
<b>Rear Tire Size</b>	-
<b>Spare Tire Size</b>	Not full-size

## Audio/Interior Lighting

<b>Speaker Brand Name</b>	○Beats
<b>Number of speakers</b>	• 4 horns; ○ 8 horns

## Driving functions

<b>Navigation traffic information display</b>	-
<b>Lane assist</b>	-

## Driving functions (continued)

<b>Lane Keeping Assist System</b>	-
<b>Cruise control system</b>	• Cruise control
<b>Satellite navigation system</b>	-
<b>Parking Assist</b>	-

## Exterior lighting

<b>Low beam light source</b>	• Halogen
<b>High beam light source</b>	• Halogen
<b>LED daytime running lights</b>	-
<b>Adaptive high and low beam</b>	-
<b>Automatic headlights</b>	-
<b>Height-adjustable headlights</b>	•
<b>Headlight Delay Off</b>	-

## Exterior mirrors

<b>Exterior mirror function</b>	• Electric adjustment; • Mirror heating
---------------------------------	---

## Appearance/anti-theft

<b>Rim material</b>	• Aluminum alloy
<b>Electric trunk</b>	-
<b>Electronic engine immobilizer</b>	•
<b>Central locking system in the car</b>	•
<b>Key Type</b>	• Remote key
<b>Keyless start system</b>	-

## Skylight/Glass

<b>Sunroof Type</b>	• Electric sunroof
<b>Front/rear electric windows</b>	Front •/Rear •
<b>One-touch window lifting function</b>	• Full car
<b>Window anti-pinch function</b>	•
<b>Car makeup mirror</b>	• Main driver's lamp; • co-pilot's lamp

## Skylight/Glass (continued)

Rear wiper	•
------------	---

## Interior and exterior color

Exterior Color	Royal Blue:#1C52AC; Van Gogh Gold:#F1C15D; Polar White:#FFFFFF; Roman Red:#B91119; Pearlescent Silver:#B8B5A6
Interior Color	Black/Grey:#464B51/#757F89

## Steering wheel/interior mirror

Steering Wheel Material	• Plastic
Steering wheel position adjustment	• Manual up and down front and rear adjustment
Multi-function steering wheel	•
Heated Steering Wheel	-
Steering wheel memory	-
Trip computer display screen	• Monochrome
Full LCD instrument panel	-
Interior rearview mirror function	• Manual anti-glare

## Intelligent configuration

Connected Car Services	-
OTA Updates	-

## Driving Control

Driving mode switch	• Movement
Automatic parking	-
Hill start assist	•
Engine start-stop technology	•

## Driving Hardware

Front/rear parking radar	Front-/Rear •
--------------------------	---------------

## In-car charging

Multimedia/charging port	•USB;•SD
Number of USB/Type-C ports	• 1 in the front row

---

"●" = Standard equipment

"□" = Not available

"○" = Optional equipment.

Note: These are Chinese market vehicles. Warranty coverage is not available outside of China.