

Vehicle Detail Report

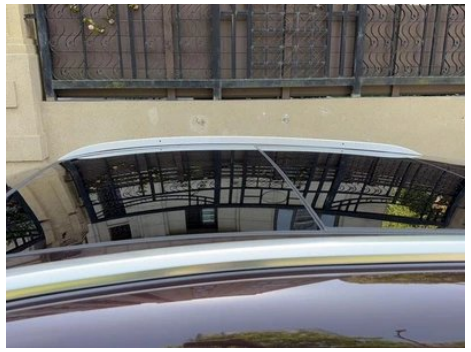
Macan 2014 Macan 2.0T

Basic Information

| | |
|--------------------|--------------|
| Brand | Porsche |
| Mileage | 86,000 km |
| Color | Coffee color |
| First Registration | 2015-04-01 |
| Transfer Count | 0 |

Vehicle Images





Vehicle Condition

1. Inner side of right B-pillar, Scratch. 2. Driver seat rails and frame, Signs of disassembly. 3. Passenger seat rails and frame, Signs of disassembly. 4. Right rear fender, Paint repair, Bodywork repair.

Configuration Information

Model Information

| | |
|--------------------|-----------------------|
| Model Name | Macan 2014 Macan 2.0T |
| Launch Date | 2014.04 |

Basic parameters

| | |
|---------------------------------------------|-------------------------|
| Vehicle Class | Mid-size SUV |
| Energy Type | Gasoline |
| Maximum Power (kW) | 174 |
| Maximum Torque (N·m) | 350 |
| Transmission | 7-speed wet dual-clutch |
| Body Type | SUV |
| Engine | 2.0L 237 hp L4 |
| Dimensions (L×W×H) (mm) | 4681*1923*1624 |
| Official 0-100 km/h Acceleration (s) | 6.9 |
| Top Speed (km/h) | 223 |
| Curb Weight (kg) | 1770 |
| Maximum Gross Weight (kg) | - |
| Measured 0-100 km/h Acceleration (s) | 6.8 |

Basic parameters (continued)

| | |
|-------------------------------------------------|-------|
| Measured 100-0 km/h Braking Distance (m) | 36.72 |
|-------------------------------------------------|-------|

engine

| | |
|--------------------------------|-----------------|
| Engine Model | - |
| Displacement (mL) | 1984 |
| Displacement (L) | 2.0 |
| Induction Type | Turbocharging |
| Cylinder Arrangement | L |
| Number of Cylinders | 4 |
| Valves per Cylinder | 4 |
| Compression Ratio | 9.6 |
| Valve Train | DOHC |
| Maximum Power (PS) | 237 |
| Max Power Speed (rpm) | 5000-6800 |
| Max Torque Speed (rpm) | 1500-4500 |
| Maximum net power (kW) | - |
| Fuel Grade | 95. |
| Fuel Delivery System | Mixed injection |
| Cylinder Head Material | Aluminum alloy |
| Cylinder Block Material | Cast iron |

Screen/System

| | |
|-------------------------------------|------------------------------------------------------------------------|
| Central control color screen | <ul style="list-style-type: none">• |
| Bluetooth/In-car Phone | <input type="radio"/> |
| Car TV | <input type="radio"/> |
| In-car CD/DVD Player | <ul style="list-style-type: none">• Multi-disc CD system |

Body

| | |
|--------------------------|------|
| Length (mm) | 4681 |
| Width (mm) | 1923 |
| Height (mm) | 1624 |
| Wheelbase (mm) | 2807 |
| Front Track (mm) | - |
| Rear Track (mm) | - |
| Door Opening Type | - |
| Number of Doors | 5 |

Body (continued)

| | |
|-------------------------------|----------|
| Number of Seats | 5 |
| Fuel Tank Capacity (L) | 65 |
| Trunk volume (L) | 500-1500 |
| Drag Coefficient (Cd) | - |

Gearbox

| | |
|--------------------------|------------------------------------|
| Abbreviation | 7-speed wet dual-clutch |
| Number of Gears | 7 |
| Transmission Type | Wet Dual-Clutch Transmission (DCT) |

Chassis steering

| | |
|---------------------------------------|----------------------------------------|
| Drive Type | Front-engine, All-wheel drive (F-AWD) |
| Four-wheel drive | Full-time four-wheel drive |
| Central differential structure | Multi-plate clutch |
| Front Suspension Type | Double wishbone independent suspension |
| Rear Suspension Type | Multi-link independent suspension |
| Power Steering Type | Electric power assistance |
| Vehicle structure | bearing type |

Seat Configuration

| | |
|----------------------------------------------------------------|--------------------------------------------------------------------------------------------------------------|
| Seat Material | • Leather |
| Main seat adjustment | • Front and rear adjustment; • Backrest adjustment; • Height adjustment (2-way); ○ Height adjustment (4-way) |
| Co-seat adjustment method | • Front and rear adjustment; • Backrest adjustment |
| Electric adjustment of driver's seat and passenger seat | Main •/Deputy • |
| Front seat functions | • Heating; ○ Ventilation (USD 2,294) |
| Electric seat memory function | • |
| Front passenger seat rear adjustable buttons | - |
| Rear seat folding | • Proportional down |
| Front/rear center armrest | Front •/Rear • |
| Rear cup holder | • |

Seat Configuration (continued)

| | |
|----------------------------------|---------------------|
| Second row seat functions | ○ Heating (USD 941) |
|----------------------------------|---------------------|

Active safety

| | |
|-----------------------------------------------------|---|
| Anti-lock Braking System (ABS) | • |
| Electronic Brakeforce Distribution (EBD/CBC) | • |
| Brake Assist System (EBA/BAS/BA) | • |
| Traction Control System (ASR/TCS/TRC) | • |
| Electronic Stability Control (ESC/ESP/DSC) | • |
| Tire Pressure Monitoring System (TPMS) | ○ |
| Seat Belt Reminder | • |
| ISOFIX Child Seat Anchors | • |
| Lane Departure Warning System (LDWS) | ○ |
| Autonomous Emergency Braking (AEB) | ○ |
| Driver Fatigue Detection | - |

Air conditioning/refrigerator

| | |
|----------------------------------------------------|------------------------------|
| Air conditioning temperature control method | • Automatic air conditioning |
| Rear Independent Climate Control | ○ |
| Rear seat air vents | ○ |
| Temperature zone control | • |
| Car air purifier | - |
| In-cabin PM2.5 Filter | - |

Passive safety

| | |
|--------------------------------------------------|-----------------|
| Driver/passenger airbag | Main •/Deputy • |
| Front/rear side airbags | Front •/Rear • |
| Front/rear head airbags (curtain airbags) | Front •/Rear • |

Wheel brake

| | |
|-------------------------|------------------|
| Front Brake Type | Ventilation disc |
|-------------------------|------------------|

Wheel brake (continued)

| | |
|---------------------------|--------------------|
| Rear Brake Type | Ventilation disc |
| Parking brake type | Electronic Parking |
| Front Tire Size | 235/60 R18 |
| Rear Tire Size | 255/55 R18 |
| Spare Tire Size | Not full-size |

Audio/Interior Lighting

| | |
|---------------------------|--------------------------------------------------|
| Speaker Brand Name | • BOSE; ○ Voice of Burmester Berlin (USD 11,721) |
| Number of speakers | • ≥ 12 horns |

Driving functions

| | |
|-----------------------------------------------|-------------------------------------|
| Navigation traffic information display | - |
| Lane assist | ○ |
| Lane Keeping Assist System | - |
| Cruise control system | • Cruise control; ○ Adaptive cruise |
| Satellite navigation system | ○ |
| Parking Assist | - |

Exterior lighting

| | |
|-------------------------------------|---------|
| Low beam light source | • Xenon |
| High beam light source | • Xenon |
| LED daytime running lights | • |
| Adaptive high and low beam | - |
| Automatic headlights | • |
| Front fog lights | • |
| Height-adjustable headlights | • |
| Headlight Delay Off | - |
| Turn headlights | ○ |
| Headlight cleaning device | ○ |

Exterior mirrors

| | |
|---------------------------------|--------------------------------------------------------------------------------------------------------|
| Exterior mirror function | • Electric adjustment; • Electric folding; ○ Mirror memory; • Heated mirrors; ○ Auto-dimming (USD 882) |
|---------------------------------|--------------------------------------------------------------------------------------------------------|

Appearance/anti-theft

Appearance/anti-theft (continued)

| | |
|------------------------------------------|------------------|
| Rim material | • Aluminum alloy |
| Electric trunk | • |
| Electronic engine immobilizer | • |
| Central locking system in the car | • |
| Key Type | • Remote key |
| Keyless start system | ○ |
| Keyless entry function | ○ |
| Roof rack | ○ |
| Active closed grille | • |

Skylight/Glass

| | |
|------------------------------------|---------------------|
| Sunroof Type | • Panoramic sunroof |
| Front/rear electric windows | Front •/Rear • |
| Window anti-pinch function | • |
| Car makeup mirror | • |
| Rear wiper | • |
| Rain sensor wiper function | • |
| Rear side window sunshades | ○ |
| Rear side privacy glass | • |

Interior and exterior color

| | |
|-----------------------|--------------------------------------------------------------------------------------------------------------------------------------------------------|
| Exterior Color | Black: #040404; White: #FFFFFF; Rhythmic Red: #A42E3E |
| Interior Color | Black: #000000; Luxor Beige: #CC9966; Pomegranate Red: #993333; Black/Pomegranate Red: #000000/#993333; Onyx Gray: #333333; Dark Coffee Brown: #2B2220 |

Steering wheel/interior mirror

| | |
|-------------------------------------------|--------------------------------------------------------------------------------------------------|
| Steering Wheel Material | • Cortex |
| Steering wheel position adjustment | • Manual up and down front and rear adjustment; ○ Electric up and down front and rear adjustment |
| Multi-function steering wheel | • |

Steering wheel/interior mirror (continued)

| | |
|------------------------------------------|------------------------|
| Heated Steering Wheel | ○ |
| Steering wheel memory | ○ |
| Trip computer display screen | • |
| Full LCD instrument panel | - |
| Interior rearview mirror function | ○ Automatic anti-glare |
| Steering Wheel Shift Paddles | • |

Intelligent configuration

| | |
|-------------------------------|---|
| Connected Car Services | - |
| OTA Updates | - |

Driving Control

| | |
|-------------------------------------|----------------------------------------------------------------------|
| Automatic parking | • |
| Steep slope descent | • |
| Hill start assist | • |
| Variable suspension function | • Suspension soft-hard adjustment; ○ Suspension height adjustment |
| Air Suspension | ○ |
| Variable steering ratio | • |
| Engine start-stop technology | • |

Driving Hardware

| | |
|-----------------------------------------|-------------------------------------------------|
| Front/rear parking radar | Front •/Rear • |
| Driving Assistance Camera System | • Reversing image; ○ 360-degree panoramic image |

In-car charging

| | |
|---------------------------------|-----------|
| Multimedia/charging port | •USB;•AUX |
|---------------------------------|-----------|

"●" = Standard equipment

"-" = Not available

"○" = Optional equipment.

Note: These are Chinese market vehicles. Warranty coverage is not available outside of China.