

Vehicle Detail Report

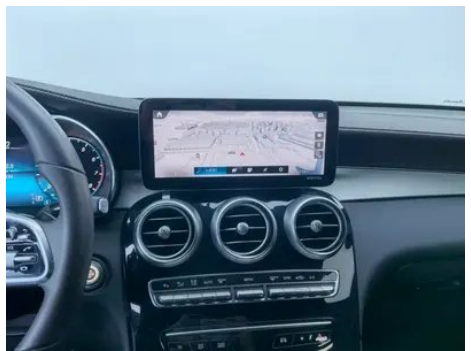
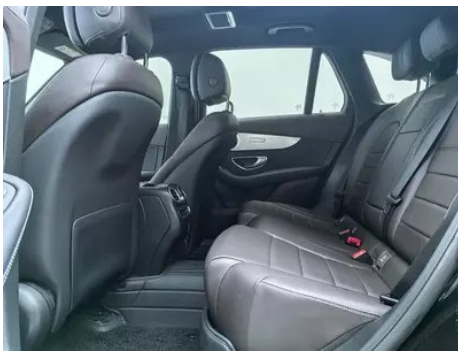
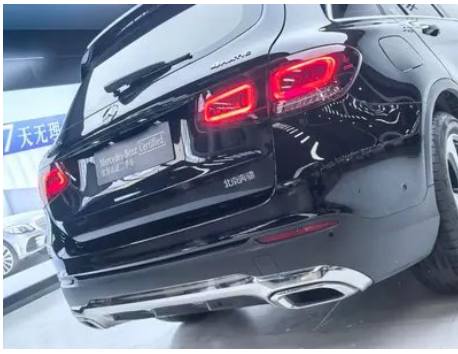
Mercedes-Benz GLC 2021 GLC 260 L 4MATIC Dynamic

Basic Information

Brand	Mercedes-Benz
Mileage	16,900 km
Color	Black
First Registration	2021-11-01
Transfer Count	1

Vehicle Images





Vehicle Condition

1. Original metal body panels with factory paint.

Configuration Information

Model Information

Model Name	Mercedes-Benz GLC 2021 GLC 260 L 4MATIC Dynamic
-------------------	---

Model Information (continued)

Launch Date	2020.11
--------------------	---------

Basic parameters

Vehicle Class	Mid-size SUV
Energy Type	Gasoline
Maximum Power (kW)	145
Maximum Torque (N·m)	320
Transmission	9-gear manual integration
Body Type	SUV
Engine	2.0L 197 hp L4
Dimensions (L×W×H) (mm)	4764*1898*1642
Official 0-100 km/h Acceleration (s)	8.4
Top Speed (km/h)	213
Curb Weight (kg)	1890
Maximum Gross Weight (kg)	-
NEDC Combined Fuel Consumption (L/100km)	8.1

engine

Engine Model	264 920
Displacement (mL)	1991
Displacement (L)	2.0
Induction Type	Turbocharging
Cylinder Arrangement	L
Number of Cylinders	4
Valves per Cylinder	4
Valve Train	DOHC
Maximum Power (PS)	197
Max Power Speed (rpm)	6100
Max Torque Speed (rpm)	1650-4000
Maximum net power (kW)	145
Fuel Grade	95.
Fuel Delivery System	Direct injection
Cylinder Head Material	Aluminum alloy

engine (continued)

Cylinder Block Material	Aluminum alloy
Engine layout	Longitudinal

Screen/System

Central control color screen	<ul style="list-style-type: none">• Touch LCD screen
Infotainment Screen Size	<ul style="list-style-type: none">• 10.25 inches
Bluetooth/In-car Phone	<ul style="list-style-type: none">•
Smartphone Integration/Mirroring	<ul style="list-style-type: none">• Support CarPlay;• Support CarLife
Voice recognition control system	<ul style="list-style-type: none">• Multimedia system;• Telephone;• Air conditioning

Body

Length (mm)	4764
Width (mm)	1898
Height (mm)	1642
Wheelbase (mm)	2973
Front Track (mm)	1614
Rear Track (mm)	1611
Door Opening Type	swing door
Number of Doors	5
Number of Seats	5
Fuel Tank Capacity (L)	66
Trunk volume (L)	-
Drag Coefficient (Cd)	-
Approach Angle (°)	23
Departure Angle (°)	21

Gearbox

Abbreviation	9-gear manual integration
Number of Gears	9
Transmission Type	Automatic Transmission with Manual Mode (AT)

Chassis steering

Drive Type	Front-engine, All-wheel drive (F-AWD)
Four-wheel drive	Full-time four-wheel drive

Chassis steering (continued)

Central differential structure	Multi-plate clutch
Front Suspension Type	Multi-link independent suspension
Rear Suspension Type	Multi-link independent suspension
Power Steering Type	Electric power assistance
Vehicle structure	bearing type

Seat Configuration

Seat Material	<ul style="list-style-type: none">• Imitation leather
Main seat adjustment	<ul style="list-style-type: none">• Front and rear adjustment;• Backrest adjustment;• Height adjustment (4-way);• Leg rest adjustment;• Lumbar support (4-way)
Co-seat adjustment method	<ul style="list-style-type: none">• Front and rear adjustment;• Backrest adjustment;• Height adjustment (4-way);• Leg rest adjustment;• Lumbar support (4-way)
Electric adjustment of driver's seat and passenger seat	Main •/Deputy •
Front seat functions	<ul style="list-style-type: none">• Heating
Front passenger seat rear adjustable buttons	<ul style="list-style-type: none">•
Rear seat folding	<ul style="list-style-type: none">• Proportional down
Front/rear center armrest	Front •/Rear •
Rear cup holder	<ul style="list-style-type: none">•
Second row seat functions	<input type="radio"/> Heating (USD 441)

Active safety

Anti-lock Braking System (ABS)	<ul style="list-style-type: none">•
Electronic Brakeforce Distribution (EBD/CBC)	<ul style="list-style-type: none">•
Brake Assist System (EBA/BAS/BA)	<ul style="list-style-type: none">•
Traction Control System (ASR/TCS/TRC)	<ul style="list-style-type: none">•
Electronic Stability Control (ESC/ESP/DSC)	<ul style="list-style-type: none">•
Tire Pressure Monitoring System (TPMS)	<ul style="list-style-type: none">• Tire pressure display

Active safety (continued)

Seat Belt Reminder	• Front row
ISOFIX Child Seat Anchors	•
Lane Departure Warning System (LDWS)	-
Autonomous Emergency Braking (AEB)	•
Driver Fatigue Detection	•
Emergency Call System (eCall)	•

Air conditioning/refrigerator

Air conditioning temperature control method	• Automatic air conditioning
Rear Independent Climate Control	-
Rear seat air vents	•
Temperature zone control	•
Car air purifier	-
In-cabin PM2.5 Filter	○(USD 221)

Passive safety

Driver/passenger airbag	Main •/Deputy •
Front/rear side airbags	Front •/Rear ○ Rear side airbags (USD 456)
Front/rear head airbags (curtain airbags)	Front •/Rear •
Run-flat tires	•
Knee airbag	• Main driver knee airbag

Wheel brake

Front Brake Type	Ventilation disc
Rear Brake Type	Ventilation disc
Parking brake type	Electronic Parking
Front Tire Size	235/60 R18
Rear Tire Size	235/60 R18
Spare Tire Size	None

Audio/Interior Lighting

Speaker Brand Name	○Burmester Voices of Berlin
Number of speakers	•7 speakers; ○13 speakers

Audio/Interior Lighting (continued)

Interior ambient lighting	<input type="radio"/> 64 color
----------------------------------	--------------------------------

Driving functions

Navigation traffic information display	-
Lane assist	<input type="radio"/> (USD 603)
Lane Keeping Assist System	-
Cruise control system	<ul style="list-style-type: none">• Cruise control
Satellite navigation system	-
Parking Assist	<ul style="list-style-type: none">•

Exterior lighting

Low beam light source	<ul style="list-style-type: none">• LED
High beam light source	<ul style="list-style-type: none">• LED
LED daytime running lights	<ul style="list-style-type: none">•
Adaptive high and low beam	-
Automatic headlights	<ul style="list-style-type: none">•
Height-adjustable headlights	<ul style="list-style-type: none">•
Headlight Delay Off	<ul style="list-style-type: none">•

Exterior mirrors

Exterior mirror function	<ul style="list-style-type: none">• Electric adjustment;• Electric folding;• Heated mirrors;• Automatic down-folding on reverse;• Automatic folding upon locking;• Auto-dimming
---------------------------------	--

Appearance/anti-theft

Rim material	<ul style="list-style-type: none">• Aluminum alloy
Electric trunk	<ul style="list-style-type: none">•
Electronic engine immobilizer	<ul style="list-style-type: none">•
Central locking system in the car	<ul style="list-style-type: none">•
Key Type	<ul style="list-style-type: none">• Remote key
Keyless start system	<ul style="list-style-type: none">•
Keyless entry function	<input type="radio"/> Whole vehicle
Appearance Kit	<input type="radio"/> Sports style

Appearance/anti-theft (continued)

Hands-free Trunk	○
Electric trunk position memory	•
Roof rack	•
Remote start function	•

Skylight/Glass

Sunroof Type	• Sectional electric sunroof
Front/rear electric windows	Front •/Rear •
One-touch window lifting function	• Full car
Window anti-pinch function	•
Car makeup mirror	• Driver's side ambient light; • Passenger-side ambient light; • Rear-row ambient light
Rear wiper	•
Rain sensor wiper function	• Rainfall-sensing

Interior and exterior color

Exterior Color	Turquoise green:#193A48; Moonlight lime:#566262; Obsidian black:#000000; Graphite gray:#4E5158; Sapphire blue:#0D2C95; Arctic white:#F4F4F4; Hao Sha Yin:#D7DCDC; Ruby black:#1B100F; Time and space silver:#ACACAE; Zircon Yinghong:#B00D15
Interior Color	Black/coffee brown:#000000/#221F1F; Black:#000000; Black/saddle brown:#000000/#844B41; Black/cranberry red:#000000/#962A31; Magma gray/black:#323232/#000000

Steering wheel/interior mirror

Steering Wheel Material	• Cortex
Steering wheel position adjustment	• Manual up and down front and rear adjustment
Multi-function steering wheel	•
Heated Steering Wheel	-

Steering wheel/interior mirror (continued)

Steering wheel memory	-
Trip computer display screen	• Color
Full LCD instrument panel	•
LCD instrument size	• 12.3 inches
Interior rearview mirror function	• Automatic anti-glare
Steering Wheel Shift Paddles	•

Intelligent configuration

Connected Car Services	•
OTA Updates	-

Driving Control

Driving mode switch	• Sport; • Economy; • Standard/Comfort
Automatic parking	•
Hill start assist	•
Variable suspension function	• Soft and hard adjustment of suspension
Variable steering ratio	•
Engine start-stop technology	•

Driving Hardware

Front/rear parking radar	Front •/Rear •
Driving Assistance Camera System	• Reversing image

In-car charging

Multimedia/charging port	•Type-C
Number of USB/Type-C ports	• 2 in the front row/2 in the back row
Mobile phone wireless charging function	○ Front row (USD 265)
Luggage compartment 12V power socket	•

Optional Package

Optional Package (continued)

Optional Package	
	Zhixiang Package 2 260 L 4MATIC Dynamic Type (USD 1,059; Including: AMG body style components, keyless entry comfort components (KEYLESS-GO)); Zhile Package 260 L 4MATIC Dynamic Type (USD 1,279; Including: Burmester® Surround Stereo Sound System, Ambient Atmosphere Lighting System)

"●" = Standard equipment

"_" = Not available

"○" = Optional equipment.

Note: These are Chinese market vehicles. Warranty coverage is not available outside of China.