

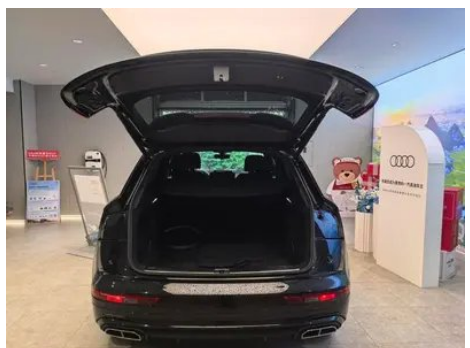
# Vehicle Detail Report

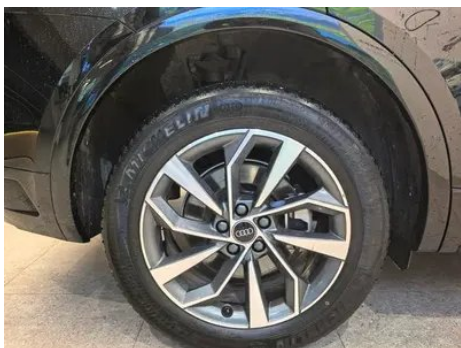
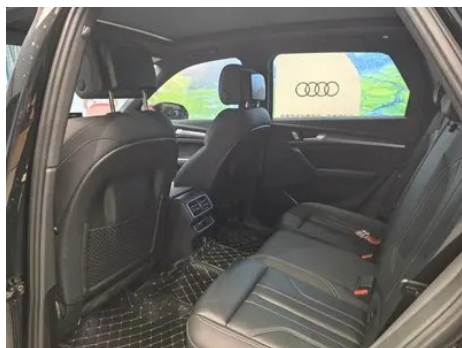
## Audi Q5L 2023 40T Deluxe Dynamic

### Basic Information

Brand	Audi
Mileage	27,000 km
Color	Black
First Registration	2023-07-01
Transfer Count	1

### Vehicle Images





## Vehicle Condition

1. Right rear quarter panel, Deformation.

## Configuration Information

### Model Information

<b>Model Name</b>	Audi Q5L 2023 Model 40T Luxury Dynamic Edition
<b>Launch Date</b>	2023.07

### Basic parameters

<b>Vehicle Class</b>	Mid-size SUV
<b>Energy Type</b>	Gasoline
<b>Maximum Power (kW)</b>	140
<b>Maximum Torque (N·m)</b>	-
<b>Transmission</b>	7-speed wet dual-clutch
<b>Body Type</b>	SUV
<b>Engine</b>	2.0L 190 hp L4
<b>Dimensions (L×W×H) (mm)</b>	4770*1893*1667
<b>Official 0-100 km/h Acceleration (s)</b>	-
<b>Top Speed (km/h)</b>	211
<b>Curb Weight (kg)</b>	1870
<b>Maximum Gross Weight (kg)</b>	2355
<b>WLTP Combined Fuel Consumption (L/100km)</b>	7.77

## engine

<b>Engine Model</b>	DTG
<b>Displacement (mL)</b>	1984
<b>Displacement (L)</b>	2.0
<b>Induction Type</b>	Turbocharging
<b>Cylinder Arrangement</b>	L
<b>Number of Cylinders</b>	4
<b>Valves per Cylinder</b>	4
<b>Valve Train</b>	DOHC
<b>Maximum Power (PS)</b>	190
<b>Max Power Speed (rpm)</b>	-
<b>Max Torque Speed (rpm)</b>	-
<b>Maximum net power (kW)</b>	140
<b>Fuel Grade</b>	95.
<b>Fuel Delivery System</b>	Direct injection
<b>Cylinder Head Material</b>	Aluminum alloy
<b>Cylinder Block Material</b>	Cast iron
<b>Engine layout</b>	Longitudinal

## Screen/System

<b>Central control color screen</b>	<ul style="list-style-type: none"><li>• Touch LCD screen</li></ul>
<b>Infotainment Screen Size</b>	<ul style="list-style-type: none"><li>• 10.1 inches</li></ul>
<b>Bluetooth/In-car Phone</b>	<ul style="list-style-type: none"><li>•</li></ul>
<b>Smartphone Integration/ Mirroring</b>	<ul style="list-style-type: none"><li>• Support CarPlay</li></ul>
<b>Voice recognition control system</b>	<ul style="list-style-type: none"><li>• Multimedia system;</li><li>• Navigation;</li><li>• Telephone</li></ul>
<b>In-vehicle intelligent system</b>	<ul style="list-style-type: none"><li>• Audi Connect</li></ul>

## Body

<b>Length (mm)</b>	4770
<b>Width (mm)</b>	1893
<b>Height (mm)</b>	1667
<b>Wheelbase (mm)</b>	2907
<b>Front Track (mm)</b>	1616
<b>Rear Track (mm)</b>	1610

## Body (continued)

<b>Ground Clearance (Fully Loaded) (mm)</b>	166
<b>Door Opening Type</b>	swing door
<b>Number of Doors</b>	5
<b>Number of Seats</b>	5
<b>Fuel Tank Capacity (L)</b>	73
<b>Trunk volume (L)</b>	550
<b>Drag Coefficient (Cd)</b>	-
<b>Approach Angle (°)</b>	21
<b>Departure Angle (°)</b>	23
<b>Minimum Turning Radius (m)</b>	5.9

## Gearbox

<b>Abbreviation</b>	7-speed wet dual-clutch
<b>Number of Gears</b>	7
<b>Transmission Type</b>	Wet Dual-Clutch Transmission (DCT)

## Chassis steering

<b>Drive Type</b>	Front-engine, All-wheel drive (F-AWD)
<b>Four-wheel drive</b>	Timely four-wheel drive
<b>Central differential structure</b>	Multi-plate clutch
<b>Front Suspension Type</b>	Five-link independent suspension
<b>Rear Suspension Type</b>	Five-link independent suspension
<b>Power Steering Type</b>	Electric power assistance
<b>Vehicle structure</b>	bearing type

## Seat Configuration

<b>Seat Material</b>	<ul style="list-style-type: none"><li>• Imitation leather</li></ul>
<b>Main seat adjustment</b>	<ul style="list-style-type: none"><li>• Front and rear adjustment;</li><li>• Backrest adjustment;</li><li>• Height adjustment (4-way);</li><li>• Leg rest adjustment;</li><li>• Lumbar support (4-way)</li></ul>
<b>Co-seat adjustment method</b>	<ul style="list-style-type: none"><li>• Front and rear adjustment;</li><li>• Backrest adjustment;</li><li>• Height adjustment (4-way);</li><li>• Leg rest adjustment;</li><li>• Lumbar support (4-way)</li></ul>

## Seat Configuration (continued)

<b>Electric adjustment of driver's seat and passenger seat</b>	Main •/Deputy •
<b>Front seat functions</b>	• Heating; ○ Ventilation (USD 1,456)
<b>Electric seat memory function</b>	○ Driving position (USD 368)
<b>Front passenger seat rear adjustable buttons</b>	-
<b>Rear seat folding</b>	• Proportional down
<b>Front/rear center armrest</b>	Front •/Rear •
<b>Rear cup holder</b>	•
<b>Second row seat functions</b>	○ Heating (USD 471)
<b>Sports style seats</b>	•
<b>Heated/cooled cup holder</b>	○ Heating (USD 235)

## Active safety

<b>Anti-lock Braking System (ABS)</b>	•
<b>Electronic Brakeforce Distribution (EBD/CBC)</b>	•
<b>Brake Assist System (EBA/BAS/BA)</b>	•
<b>Traction Control System (ASR/TCS/TRC)</b>	•
<b>Electronic Stability Control (ESC/ESP/DSC)</b>	•
<b>Tire Pressure Monitoring System (TPMS)</b>	• Tire pressure alarm
<b>Seat Belt Reminder</b>	• Front row
<b>ISOFIX Child Seat Anchors</b>	•
<b>Lane Departure Warning System (LDWS)</b>	•
<b>Autonomous Emergency Braking (AEB)</b>	•
<b>Driver Fatigue Detection</b>	-
<b>Forward Collision Warning (FCW)</b>	•
<b>Rear Collision Warning</b>	○
<b>Emergency Call System (eCall)</b>	•

## Air conditioning/refrigerator

<b>Air conditioning temperature control method</b>	• Automatic air conditioning
<b>Rear Independent Climate Control</b>	•
<b>Rear seat air vents</b>	•
<b>Temperature zone control</b>	•
<b>Car air purifier</b>	-
<b>In-cabin PM2.5 Filter</b>	-

## Passive safety

<b>Driver/passenger airbag</b>	Main •/Deputy •
<b>Front/rear side airbags</b>	Front/rear rear side airbag (USD 235)
<b>Front/rear head airbags (curtain airbags)</b>	Front •/Rear •

## Wheel brake

<b>Front Brake Type</b>	Ventilation disc
<b>Rear Brake Type</b>	Ventilation disc
<b>Parking brake type</b>	Electronic Parking
<b>Front Tire Size</b>	235/55 R19
<b>Rear Tire Size</b>	235/55 R19
<b>Spare Tire Size</b>	None

## Audio/Interior Lighting

<b>Speaker Brand Name</b>	○ Bang & Olufsen(USD 1,059)
<b>Number of speakers</b>	• 10 horns; ○ 19 horns
<b>Interior ambient lighting</b>	• 30 colors
<b>Touch reading light</b>	•

## Driving functions

<b>Navigation traffic information display</b>	•
<b>Lane assist</b>	○(USD 1,029)
<b>Lane Keeping Assist System</b>	○(USD 647)
<b>Cruise control system</b>	• Constant speed cruise; ○ Adaptive cruise (USD 2,382)
<b>Satellite navigation system</b>	•
<b>Driving assistance level</b>	○L2

## Driving functions (continued)

<b>Rear Cross Traffic Alert</b>	○(USD 176)
<b>Parking Assist</b>	○

## Exterior lighting

<b>Low beam light source</b>	•LED
<b>High beam light source</b>	•LED
<b>LED daytime running lights</b>	•
<b>Adaptive high and low beam</b>	○(USD 294)
<b>Automatic headlights</b>	•
<b>Height-adjustable headlights</b>	•
<b>Headlight Delay Off</b>	•
<b>Lighting features</b>	○ Matrix (USD 1,176)
<b>Turn headlights</b>	○
<b>Headlight rain and fog mode</b>	•
<b>Headlight cleaning device</b>	○(USD 1,176)

## Exterior mirrors

<b>Exterior mirror function</b>	• Electric adjustment; • Electric folding; ○ Rearview mirror memory (USD 147); • Rearview mirror heating; • Automatically turn down when reversing; • Automatically fold when locking the car; • Automatic anti-glare
---------------------------------	---

## Appearance/anti-theft

<b>Rim material</b>	• Aluminum alloy
<b>Electric trunk</b>	•
<b>Electronic engine immobilizer</b>	•
<b>Central locking system in the car</b>	•
<b>Key Type</b>	• Remote key
<b>Keyless start system</b>	•
<b>Keyless entry function</b>	• Full car
<b>Appearance Kit</b>	• Sports style
<b>Hands-free Trunk</b>	•

## Appearance/anti-theft (continued)

<b>Electric trunk position memory</b>	<ul style="list-style-type: none"><li>•</li></ul>
<b>Roof rack</b>	<ul style="list-style-type: none"><li>•</li></ul>
<b>Active closed grille</b>	<ul style="list-style-type: none"><li>•</li></ul>
<b>Side pedals</b>	<input type="radio"/> Fixed (USD 515)

## Skylight/Glass

<b>Sunroof Type</b>	<ul style="list-style-type: none"><li>• Openable panoramic sunroof</li></ul>
<b>Front/rear electric windows</b>	Front •/Rear •
<b>One-touch window lifting function</b>	<ul style="list-style-type: none"><li>• Full car</li></ul>
<b>Window anti-pinch function</b>	<ul style="list-style-type: none"><li>•</li></ul>
<b>Car makeup mirror</b>	<ul style="list-style-type: none"><li>• Main driver's lamp; • co-pilot's lamp</li></ul>
<b>Rear wiper</b>	<ul style="list-style-type: none"><li>•</li></ul>
<b>Rain sensor wiper function</b>	<ul style="list-style-type: none"><li>• Rainfall-sensing</li></ul>
<b>Rear side window sunshades</b>	<input type="radio"/> Manual (USD 515)

## Interior and exterior color

<b>Exterior Color</b>	Sky cloud ash:#646464; Legendary black:#101010; Sohu brown:#50463C; Star blue:#053250; Matte legend black:#000000; Ibis white:#F7F6F1; Matador red:#69091E; Tanggula white:#E9E9E9; Rhythmic blue:#143250; Aurora blue:#162B66
<b>Interior Color</b>	Black: #000000; Black/Alaskan Red: #000000/#821E22; Black/ Occapi Brown: #000000/#966446; Black/Rock Gray: #000000/#BCBCBC

## Steering wheel/interior mirror

<b>Steering Wheel Material</b>	<ul style="list-style-type: none"><li>• Leather</li></ul>
<b>Steering wheel position adjustment</b>	<ul style="list-style-type: none"><li>• Manual up and down front and rear adjustment</li></ul>
<b>Multi-function steering wheel</b>	<ul style="list-style-type: none"><li>•</li></ul>
<b>Heated Steering Wheel</b>	<input type="radio"/> (USD 147)

## Steering wheel/interior mirror (continued)

<b>Steering wheel memory</b>	-
<b>Trip computer display screen</b>	• Color
<b>Full LCD instrument panel</b>	•
<b>LCD instrument size</b>	• 12.3 inches
<b>Interior rearview mirror function</b>	• Automatic anti-glare
<b>Gear shifting</b>	• Electronic gear shift
<b>HUD Head Up Digital Display</b>	○(USD 2,632)
<b>Steering Wheel Shift Paddles</b>	•

## Intelligent configuration

<b>Connected Car Services</b>	•
<b>OTA Updates</b>	-
<b>4G/5G Network</b>	•4G
<b>Mobile APP remote function</b>	• Door control; • Vehicle condition inquiry/diagnosis

## Driving Control

<b>Driving mode switch</b>	• Sport; • Standard/Comfort; • Off-Road; • Custom/Personalized
<b>Automatic parking</b>	•
<b>Steep slope descent</b>	•
<b>Hill start assist</b>	•
<b>Engine start-stop technology</b>	•

## Driving Hardware

<b>Front/rear parking radar</b>	Front •/Rear •
<b>Driving Assistance Camera System</b>	• Reversing image; ○ 360-degree panoramic image (USD 544)

## In-car charging

<b>Multimedia/charging port</b>	•USB;•Type-C
<b>Number of USB/Type-C ports</b>	• 2 in the front row/2 in the back row
<b>Luggage compartment 12V power socket</b>	•

---

"●" = Standard equipment

"□" = Not available

"○" = Optional equipment.

Note: These are Chinese market vehicles. Warranty coverage is not available outside of China.