

Vehicle Detail Report

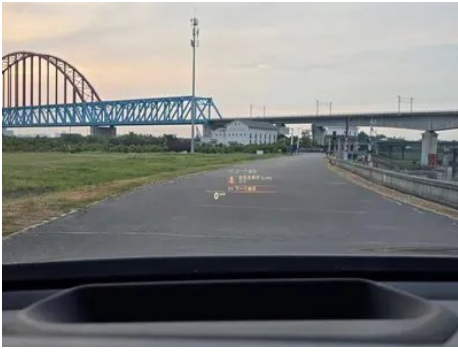
BMW 6 Series GT 2021 Restyling 630i M Sports suit

Basic Information

| | |
|--------------------|-------------------|
| Brand | BMW |
| Mileage | 69,000 km |
| Color | Black |
| First Registration | 2021-07-01 |
| Transfer Count | 0 |

Vehicle Images







Vehicle Condition

1. Driver's seat rails and frame, Signs of removal. 2. Front passenger seat rails and frame, Signs of removal. 3. Left rear quarter panel, Deformation, Scratch damage.

Configuration Information

Model Information

| | |
|--------------------|---|
| Model Name | BMW 6 Series GT 2021 Restyling 630i M Sports suit |
| Launch Date | 2021.06 |

Basic parameters

| | |
|---|---------------------------|
| Vehicle Class | Mid-size and large cars |
| Energy Type | Gasoline |
| Maximum Power (kW) | 190 |
| Maximum Torque (N·m) | 400 |
| Transmission | 8-gear manual integration |
| Body Type | Liftback |
| Engine | 2.0T 258 horsepower L4 |
| Dimensions (L×W×H) (mm) | 5103*1904*1550 |
| Official 0-100 km/h Acceleration (s) | 6.5 |
| Top Speed (km/h) | 250 |
| Curb Weight (kg) | - |
| Maximum Gross Weight (kg) | - |
| NEDC Combined Fuel Consumption (L/100km) | 7.8 |

engine

| | |
|--------------------------|---------------|
| Engine Model | B48B20B |
| Displacement (mL) | 1998 |
| Displacement (L) | 2.0 |
| Induction Type | Turbocharging |

engine (continued)

| | |
|--------------------------------|------------------|
| Cylinder Arrangement | L |
| Number of Cylinders | 4 |
| Valves per Cylinder | 4 |
| Valve Train | DOHC |
| Bore (mm) | 82 |
| Stroke (mm) | 94.6 |
| Maximum Power (PS) | 258 |
| Max Power Speed (rpm) | 5000-6500 |
| Max Torque Speed (rpm) | 1550-4400 |
| Maximum net power (kW) | 190 |
| Fuel Grade | 95. |
| Fuel Delivery System | Direct injection |
| Cylinder Head Material | Aluminum alloy |
| Cylinder Block Material | Aluminum alloy |
| Engine layout | Longitudinal |

Screen/System

| | |
|---|--|
| Central control color screen | <ul style="list-style-type: none">• Touch LCD screen |
| Infotainment Screen Size | <ul style="list-style-type: none">• 12.3 inches |
| Bluetooth/In-car Phone | <ul style="list-style-type: none">• |
| Smartphone Integration/Mirroring | <ul style="list-style-type: none">• Support CarPlay;• Support CarLife |
| Voice recognition control system | <ul style="list-style-type: none">• Multimedia system;• Navigation;• Telephone;• Air conditioning |
| Gesture Control | ○(USD 368) |

Body

| | |
|--------------------------|------------|
| Length (mm) | 5103 |
| Width (mm) | 1904 |
| Height (mm) | 1550 |
| Wheelbase (mm) | 3070 |
| Front Track (mm) | - |
| Rear Track (mm) | - |
| Door Opening Type | swing door |
| Number of Doors | 5 |
| Number of Seats | 5 |

Body (continued)

| | |
|-------------------------------|----|
| Fuel Tank Capacity (L) | 68 |
| Trunk volume (L) | - |
| Drag Coefficient (Cd) | - |

Gearbox

| | |
|--------------------------|--|
| Abbreviation | 8-gear manual integration |
| Number of Gears | 8 |
| Transmission Type | Automatic Transmission with Manual Mode (AT) |

Chassis steering

| | |
|------------------------------|--|
| Drive Type | Front-engine, Rear-wheel drive (FR) |
| Front Suspension Type | Double wishbone independent suspension |
| Rear Suspension Type | Multi-link independent suspension |
| Power Steering Type | Electric power assistance |
| Vehicle structure | bearing type |

Seat Configuration

| | |
|--|--|
| Seat Material | <ul style="list-style-type: none">• Leather |
| Main seat adjustment | <ul style="list-style-type: none">• Front and rear adjustment;• Backrest adjustment;• Height adjustment (4-way);• Leg rest adjustment;• Lumbar support (4-way) |
| Co-seat adjustment method | <ul style="list-style-type: none">• Front and rear adjustment;• Backrest adjustment;• Height adjustment (4-way);• Leg rest adjustment;• Lumbar support (4-way) |
| Electric adjustment of driver's seat and passenger seat | Main •/Deputy • |
| Front seat functions | <ul style="list-style-type: none">• Heating |
| Electric seat memory function | <ul style="list-style-type: none">• Driving position |
| Front passenger seat rear adjustable buttons | - |
| Second row seat adjustment | <ul style="list-style-type: none">• Backrest adjustment |
| Rear seat folding | <ul style="list-style-type: none">• Proportional down |
| Front/rear center armrest | Front •/Rear • |
| Rear cup holder | <ul style="list-style-type: none">• |

Seat Configuration (continued)

| | |
|---|---|
| Sports style seats | • |
| Second row seats electrically adjustable | • |

Active safety

| | |
|---|-------------------------|
| Anti-lock Braking System (ABS) | • |
| Electronic Brakeforce Distribution (EBD/CBC) | • |
| Brake Assist System (EBA/BAS/BA) | • |
| Traction Control System (ASR/TCS/TRC) | • |
| Electronic Stability Control (ESC/ESP/DSC) | • |
| Tire Pressure Monitoring System (TPMS) | • Tire pressure display |
| Seat Belt Reminder | • Front row |
| ISOFIX Child Seat Anchors | • |
| Lane Departure Warning System (LDWS) | - |
| Autonomous Emergency Braking (AEB) | • |
| Driver Fatigue Detection | • |
| Forward Collision Warning (FCW) | • |
| Emergency Call System (eCall) | • |

Air conditioning/refrigerator

| | |
|--|------------------------------|
| Air conditioning temperature control method | • Automatic air conditioning |
| Rear Independent Climate Control | • |
| Rear seat air vents | • |
| Temperature zone control | • |
| Car air purifier | - |
| In-cabin PM2.5 Filter | • |
| Negative ion generator | ○ |
| Car fragrance device | ○(USD 471) |

Passive safety

Passive safety (continued)

| | |
|--|-----------------|
| Driver/passenger airbag | Main •/Deputy • |
| Front/rear side airbags | Front •/Rear- |
| Front/rear head airbags (curtain airbags) | Front •/Rear • |
| Run-flat tires | • |
| Passive pedestrian protection | • |

Wheel brake

| | |
|---------------------------|--------------------|
| Front Brake Type | Ventilation disc |
| Rear Brake Type | Ventilation disc |
| Parking brake type | Electronic Parking |
| Front Tire Size | 245/40 R20 |
| Rear Tire Size | 275/35 R20 |
| Spare Tire Size | None |

Audio/Interior Lighting

| | |
|----------------------------------|---|
| Speaker Brand Name | • Harman/Kardon Harman Kardon; ○ Bowers & Wilkins Bao Hua Wei Jian (USD 4,809) |
| Number of speakers | • 16 speakers |
| Interior ambient lighting | • 11 colors |

Driving functions

| | |
|---|------------------|
| Navigation traffic information display | • |
| Lane assist | ○ |
| Lane Keeping Assist System | - |
| Cruise control system | • Cruise control |
| Satellite navigation system | • |
| Road traffic sign recognition | ○ |
| Parking Assist | • |

Exterior lighting

| | |
|-----------------------------------|---------------------------|
| Low beam light source | •LED |
| High beam light source | • LED;○ Laser (USD 1,338) |
| LED daytime running lights | • |

Exterior lighting (continued)

| | |
|-------------------------------------|---|
| Adaptive high and low beam | <ul style="list-style-type: none">• |
| Automatic headlights | <ul style="list-style-type: none">• |
| Height-adjustable headlights | <ul style="list-style-type: none">• |
| Headlight Delay Off | <ul style="list-style-type: none">• |
| Turn headlights | <ul style="list-style-type: none">• |

Exterior mirrors

| | |
|---------------------------------|---|
| Exterior mirror function | <ul style="list-style-type: none">• Electric adjustment;• Electric folding;• Rearview mirror memory;• Rearview mirror heating;• Automatic downturning when reversing;• Automatic folding when locked;• Automatic anti-glare |
|---------------------------------|---|

Appearance/anti-theft

| | |
|--|--|
| Rim material | <ul style="list-style-type: none">• Aluminum alloy |
| Electric trunk | <ul style="list-style-type: none">• |
| Electronic engine immobilizer | <ul style="list-style-type: none">• |
| Central locking system in the car | <ul style="list-style-type: none">• |
| Key Type | <ul style="list-style-type: none">• Remote key |
| Keyless start system | <ul style="list-style-type: none">• |
| Keyless entry function | <ul style="list-style-type: none">• Full car |
| Appearance Kit | <ul style="list-style-type: none">• Sports style |
| Hands-free Trunk | <ul style="list-style-type: none">• |
| Remote start function | ○(USD 471) |
| Active closed grille | <ul style="list-style-type: none">• |
| Electric door closing | ○ Entire vehicle (USD 941) |
| Frameless door design | <ul style="list-style-type: none">• |
| Electric spoiler | <ul style="list-style-type: none">• |

Skylight/Glass

| | |
|--|--|
| Sunroof Type | <ul style="list-style-type: none">• Openable panoramic sunroof |
| Front/rear electric windows | Front •/Rear • |
| One-touch window lifting function | <ul style="list-style-type: none">• Full car |
| Window anti-pinch function | <ul style="list-style-type: none">• |

Skylight/Glass (continued)

| | |
|-----------------------------------|---|
| Car makeup mirror | <ul style="list-style-type: none">• Main driver's lamp; • co-pilot's lamp |
| Rear wiper | - |
| Rain sensor wiper function | <ul style="list-style-type: none">• Rainfall-sensing |
| Rear side window sunshades | <input type="radio"/> Electric (USD 662) |

Interior and exterior color

| | |
|-----------------------|---|
| Exterior Color | Ore white:#E7E7E7; Carbon black:#0F1319; Mysterious gray:#3C3C3C; Bernina gray:#49484E; Porty blue:#364D96; Fragrant red:#6E1E24; Snow mountain white:#FAFAFA |
| Interior Color | Black:#000000; Cognac:#C3694B |

Steering wheel/interior mirror

| | |
|---|--|
| Steering Wheel Material | <ul style="list-style-type: none">• Leather |
| Steering wheel position adjustment | <ul style="list-style-type: none">• Electric up and down front and rear adjustment |
| Multi-function steering wheel | <ul style="list-style-type: none">• |
| Heated Steering Wheel | <input type="radio"/> (USD 368) |
| Steering wheel memory | <ul style="list-style-type: none">• |
| Trip computer display screen | <ul style="list-style-type: none">• Color |
| Full LCD instrument panel | <ul style="list-style-type: none">• |
| LCD instrument size | <ul style="list-style-type: none">• 12.3 inches |
| Interior rearview mirror function | <ul style="list-style-type: none">• Automatic anti-glare |
| Gear shifting | <ul style="list-style-type: none">• Electronic gear shift |
| HUD Head Up Digital Display | <ul style="list-style-type: none">• |
| Steering Wheel Shift Paddles | <ul style="list-style-type: none">• |

Intelligent configuration

| | |
|-----------------------------------|--|
| Connected Car Services | <ul style="list-style-type: none">• |
| OTA Updates | <ul style="list-style-type: none">• |
| 4G/5G Network | <ul style="list-style-type: none">• 4G |
| Mobile APP remote function | <ul style="list-style-type: none">• |

Driving Control

| | |
|-------------------------------------|--|
| Driving mode switch | • Sport; • Economy; • Standard/Comfort |
| Automatic parking | • |
| Hill start assist | • |
| Air Suspension | • |
| Engine start-stop technology | • |

Driving Hardware

| | |
|---|------------------------------|
| Front/rear parking radar | Front •/Rear • |
| Driving Assistance Camera System | • 360-degree panoramic image |

In-car charging

| | |
|---|--|
| Multimedia/charging port | •USB;•Type-C |
| Number of USB/Type-C ports | • 2 in the front row/2 in the back row |
| Luggage compartment 12V power socket | • |

"●" = Standard equipment

"-" = Not available

"○" = Optional equipment.

Note: These are Chinese market vehicles. Warranty coverage is not available outside of China.