

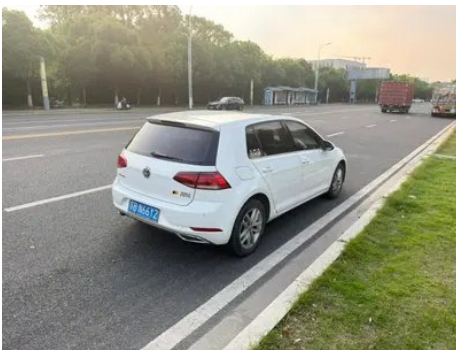
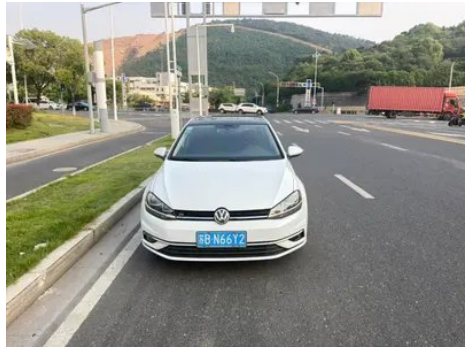
Vehicle Detail Report

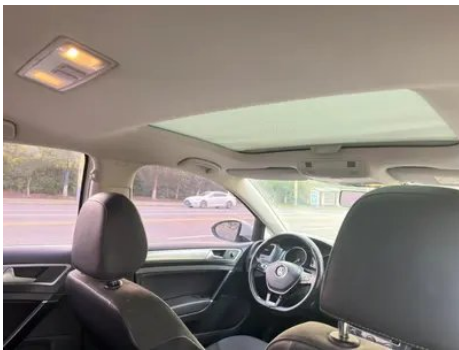
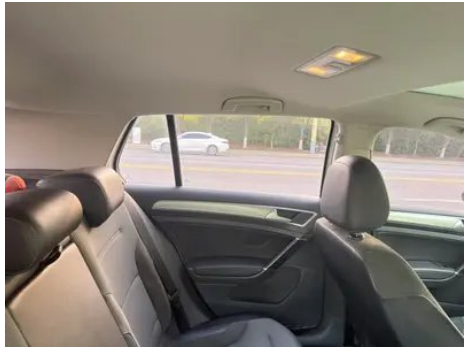
Volkswagen Golf 2018 230TSI Automatic Comfort Type

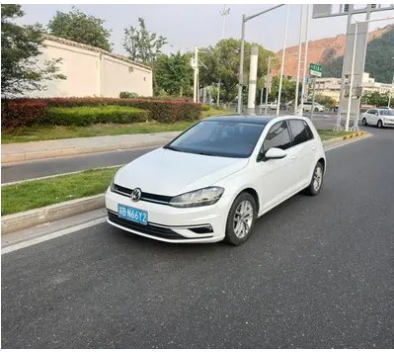
Basic Information

Brand	Volkswagen
Mileage	128,000 km
Color	White
First Registration	2018-08-01
Transfer Count	0

Vehicle Images







Vehicle Condition

1. Right front door, Body panel repair.
2. Right rear door, Body panel repair.
3. Left front fender, Body panel repair.
4. Right front fender, Paint repair.

Configuration Information

Model Information

Model Name	Volkswagen Golf 2018 230TSI Automatic Comfort Type
Launch Date	2017.11

Basic parameters

Vehicle Class	compact car
Energy Type	Gasoline
Maximum Power (kW)	96
Maximum Torque (N·m)	225
Transmission	7-speed dry dual clutch
Body Type	Hatchback
Engine	1.4T 131 horsepower L4
Dimensions (L×W×H) (mm)	4259*1799*1452
Official 0-100 km/h Acceleration (s)	8.9
Top Speed (km/h)	205
Curb Weight (kg)	1315
Maximum Gross Weight (kg)	-
NEDC Combined Fuel Consumption (L/100km)	5.4

engine

Engine Model	-
Displacement (mL)	1395
Displacement (L)	1.4
Induction Type	Turbocharging
Cylinder Arrangement	L

engine (continued)

Number of Cylinders	4
Valves per Cylinder	4
Valve Train	DOHC
Maximum Power (PS)	131
Max Power Speed (rpm)	5000-6000
Max Torque Speed (rpm)	1500-3500
Maximum net power (kW)	-
Fuel Grade	95.
Fuel Delivery System	Direct injection
Cylinder Head Material	Aluminum alloy
Cylinder Block Material	Aluminum alloy

Screen/System

Central control color screen	<ul style="list-style-type: none">• Touch LCD screen
Infotainment Screen Size	<ul style="list-style-type: none">•6.5 inches
Bluetooth/In-car Phone	<ul style="list-style-type: none">•
Smartphone Integration/Mirroring	<ul style="list-style-type: none">• Support CarPlay;• Support CarLife

Body

Length (mm)	4259
Width (mm)	1799
Height (mm)	1452
Wheelbase (mm)	2631
Front Track (mm)	-
Rear Track (mm)	-
Door Opening Type	-
Number of Doors	5
Number of Seats	5
Fuel Tank Capacity (L)	50
Trunk volume (L)	380
Drag Coefficient (Cd)	-

Gearbox

Abbreviation	7-speed dry dual clutch
Number of Gears	7
Transmission Type	Dry Dual-Clutch Transmission (DCT)

Chassis steering

Drive Type	Front-engine, Front-wheel drive (FF)
Front Suspension Type	MacPherson independent suspension
Rear Suspension Type	Four-link independent suspension
Power Steering Type	Electric power assistance
Vehicle structure	bearing type

Seat Configuration

Seat Material	• Leather/fabric mix-and-match; ○ Leather/Alcantara mix-and-match
Main seat adjustment	• Front and rear adjustment; • Backrest adjustment; • Height adjustment (2-way); • Lumbar support (2-way)
Co-seat adjustment method	• Front and rear adjustment; • Backrest adjustment; • Height adjustment (2-way)
Electric adjustment of driver's seat and passenger seat	Principal ○/Deputy-
Front seat functions	○ Heating
Electric seat memory function	○ Driving position
Front passenger seat rear adjustable buttons	-
Rear seat folding	• Proportional down
Front/rear center armrest	Front •/Rear •
Rear cup holder	•

Active safety

Anti-lock Braking System (ABS)	•
Electronic Brakeforce Distribution (EBD/CBC)	•
Brake Assist System (EBA/BAS/BA)	•
Traction Control System (ASR/TCS/TRC)	•
Electronic Stability Control (ESC/ESP/DSC)	•
Tire Pressure Monitoring System (TPMS)	• Tire pressure alarm
Seat Belt Reminder	• Front row

Active safety (continued)

ISOFIX Child Seat Anchors	•
Lane Departure Warning System (LDWS)	-
Autonomous Emergency Braking (AEB)	-
Driver Fatigue Detection	•

Air conditioning/refrigerator

Air conditioning temperature control method	• Manual air conditioning
Rear Independent Climate Control	-
Rear seat air vents	•
Temperature zone control	-
Car air purifier	-
In-cabin PM2.5 Filter	•

Passive safety

Driver/passenger airbag	Main •/Deputy •
Front/rear side airbags	Front •/Rear-
Front/rear head airbags (curtain airbags)	Front •/Rear •

Wheel brake

Front Brake Type	Ventilation disc
Rear Brake Type	Disc
Parking brake type	Electronic Parking
Front Tire Size	205/55 R16
Rear Tire Size	205/55 R16
Spare Tire Size	Not full-size

Audio/Interior Lighting

Number of speakers	• 6 speakers
Interior ambient lighting	•

Driving functions

Navigation traffic information display	-
Lane assist	-
Lane Keeping Assist System	-

Driving functions (continued)

Cruise control system	• Cruise control
Satellite navigation system	-
Parking Assist	-

Exterior lighting

Low beam light source	• Halogen
High beam light source	• Halogen
LED daytime running lights	•
Adaptive high and low beam	-
Automatic headlights	-
Front fog lights	• Halogen
Height-adjustable headlights	•
Headlight Delay Off	-
Turn signal lamp	•

Exterior mirrors

Exterior mirror function	• Electric adjustment; • Electric folding; ○ Rearview mirror memory; • Rearview mirror heating; • Reverse automatic downturning
---------------------------------	---

Appearance/anti-theft

Rim material	• Aluminum alloy
Electric trunk	-
Electronic engine immobilizer	•
Central locking system in the car	•
Key Type	• Remote key
Keyless start system	-

Skylight/Glass

Sunroof Type	• Electric sunroof
Front/rear electric windows	Front •/Rear •
One-touch window lifting function	• Full car
Window anti-pinch function	•

Skylight/Glass (continued)

Car makeup mirror	<ul style="list-style-type: none">• Main driver's lamp; • co-pilot's lamp
Rear wiper	<ul style="list-style-type: none">•

Interior and exterior color

Exterior Color	Polar white:#FFFFFF; Monsoon gray:#6C6C6C; Maya red:#A01A2E; Charm purple:#332034; Coral blue:#20367F; Deep black:#000000; Crystal silver:#ABB0B3; Tahitiin:#B39E8D; Tenggula White:#E1E1E1
Interior Color	Black:#252B2A

Steering wheel/interior mirror

Steering Wheel Material	<ul style="list-style-type: none">• Leather
Steering wheel position adjustment	<ul style="list-style-type: none">• Manual up and down front and rear adjustment
Multi-function steering wheel	<ul style="list-style-type: none">•
Heated Steering Wheel	-
Steering wheel memory	-
Trip computer display screen	<ul style="list-style-type: none">• Monochrome
Full LCD instrument panel	-
Interior rearview mirror function	<ul style="list-style-type: none">• Manual anti-glare

Intelligent configuration

Connected Car Services	-
OTA Updates	-

Driving Control

Driving mode switch	<ul style="list-style-type: none">• Movement
Automatic parking	<ul style="list-style-type: none">•
Hill start assist	<ul style="list-style-type: none">•
Engine start-stop technology	<ul style="list-style-type: none">•

Driving Hardware

Front/rear parking radar	Front-/Rear •
---------------------------------	---------------

In-car charging

Multimedia/charging port	<ul style="list-style-type: none">•USB;•SD
Number of USB/Type-C ports	<ul style="list-style-type: none">• 1 in the front row

Optional Package

Optional Package	Comfort package (USD 0.15; including: 1.Alcantara advanced suede seat 2. Driver's side 8-way electric adjustable seat 3. Front seat heating 4. Seat and rearview mirror position memory function)
-------------------------	---

"●" = Standard equipment

"_" = Not available

"○" = Optional equipment.

Note: These are Chinese market vehicles. Warranty coverage is not available outside of China.