

Vehicle Detail Report

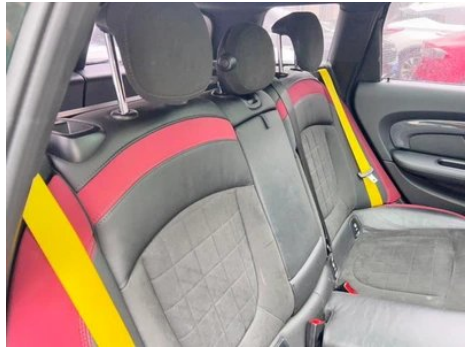
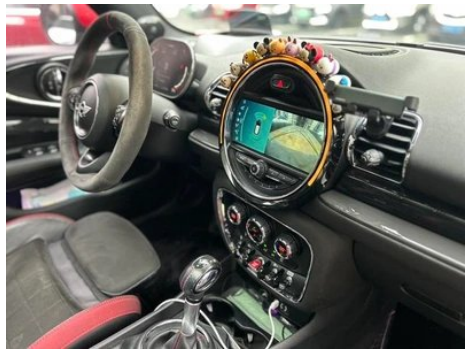
MINI JCW CLUBMAN 2017 2.0T JOHN COOPER WORKS Geek

Basic Information

Brand	MINI
Mileage	54,000 km
Color	Green
First Registration	2017-11-01
Transfer Count	3

Vehicle Images







Vehicle Condition

1. Original metal panels and factory paint.

Configuration Information

Model Information

Model Name	MINI JCW CLUBMAN 2017 2.0T JOHN COOPER WORKS Geek
Launch Date	2017.04

Basic parameters

Vehicle Class	Small car
Energy Type	Gasoline
Maximum Power (kW)	170
Maximum Torque (N·m)	350
Transmission	6-speed manual integration
Body Type	Hatchback
Engine	2.0T 231 horsepower L4
Dimensions (L×W×H) (mm)	4263*1800*1468
Official 0-100 km/h Acceleration (s)	6.3
Top Speed (km/h)	238
Curb Weight (kg)	1590
Maximum Gross Weight (kg)	-
NEDC Combined Fuel Consumption (L/100km)	7

engine

Engine Model	-
Displacement (mL)	1998
Displacement (L)	2.0
Induction Type	Turbocharging
Cylinder Arrangement	L

engine (continued)

Number of Cylinders	4
Valves per Cylinder	4
Compression Ratio	10.2
Valve Train	DOHC
Bore (mm)	82
Stroke (mm)	94.6
Maximum Power (PS)	231
Max Power Speed (rpm)	5000-6000
Max Torque Speed (rpm)	1450-4500
Maximum net power (kW)	-
Fuel Grade	Number 98
Fuel Delivery System	Direct injection
Cylinder Head Material	Aluminum alloy
Cylinder Block Material	Aluminum alloy
Engine layout	Horizontal

Screen/System

Central control color screen	<ul style="list-style-type: none">• Touch LCD screen
Infotainment Screen Size	<ul style="list-style-type: none">• 8.8 inches
Bluetooth/In-car Phone	<ul style="list-style-type: none">•
Voice recognition control system	<ul style="list-style-type: none">○ Multimedia system; ○ Navigation; ○ Telephone

Body

Length (mm)	4263
Width (mm)	1800
Height (mm)	1468
Wheelbase (mm)	2670
Front Track (mm)	1553
Rear Track (mm)	1555
Door Opening Type	-
Number of Doors	6
Number of Seats	5
Fuel Tank Capacity (L)	50
Trunk volume (L)	-

Body (continued)

Drag Coefficient (Cd)	-
------------------------------	---

Gearbox

Abbreviation	6-speed manual integration
Number of Gears	6
Transmission Type	Automatic Transmission with Manual Mode (AT)

Chassis steering

Drive Type	Front-engine, All-wheel drive (F-AWD)
Four-wheel drive	Timely four-wheel drive
Central differential structure	Multi-plate clutch
Front Suspension Type	MacPherson independent suspension
Rear Suspension Type	Multi-link independent suspension
Power Steering Type	Electric power assistance
Vehicle structure	bearing type

Seat Configuration

Seat Material	• Leather
Main seat adjustment	• Front and rear adjustment; • Backrest adjustment; • Height adjustment (2-way); • Leg rest adjustment; • Lumbar support (2-way)
Co-seat adjustment method	• Front and rear adjustment; • Backrest adjustment; • Height adjustment (2-way); • Leg rest adjustment; • Lumbar support (2-way)
Electric adjustment of driver's seat and passenger seat	-
Front seat functions	○ Heating (USD 515)
Front passenger seat rear adjustable buttons	-
Rear seat folding	• Proportional down
Front/rear center armrest	Front •/Rear-
Rear cup holder	•
Sports style seats	•

Active safety

Active safety (continued)

Anti-lock Braking System (ABS)	•
Electronic Brakeforce Distribution (EBD/CBC)	•
Brake Assist System (EBA/BAS/BA)	•
Traction Control System (ASR/TCS/TRC)	•
Electronic Stability Control (ESC/ESP/DSC)	•
Tire Pressure Monitoring System (TPMS)	• Tire pressure alarm
Seat Belt Reminder	• Front row
ISOFIX Child Seat Anchors	•
Lane Departure Warning System (LDWS)	-
Autonomous Emergency Braking (AEB)	-
Driver Fatigue Detection	-

Air conditioning/refrigerator

Air conditioning temperature control method	• Automatic air conditioning
Rear Independent Climate Control	-
Rear seat air vents	•
Temperature zone control	-
Car air purifier	-
In-cabin PM2.5 Filter	-

Passive safety

Driver/passenger airbag	Main •/Deputy •
Front/rear side airbags	Front •/Rear-
Front/rear head airbags (curtain airbags)	Front •/Rear •
Run-flat tires	•

Wheel brake

Front Brake Type	Ventilation disc
Rear Brake Type	Disc
Parking brake type	Electronic Parking

Wheel brake (continued)

Front Tire Size	225/40 R18
Rear Tire Size	225/40 R18
Spare Tire Size	Not full-size

Audio/Interior Lighting

Speaker Brand Name	• Harman/Kardon Harman Kardon
Number of speakers	• 6-7 Horns
Interior ambient lighting	• Multicolor

Driving functions

Navigation traffic information display	-
Lane assist	-
Lane Keeping Assist System	-
Cruise control system	• Cruise control
Satellite navigation system	•
Parking Assist	-

Exterior lighting

Low beam light source	•LED
High beam light source	•LED
LED daytime running lights	•
Adaptive high and low beam	-
Automatic headlights	•
Height-adjustable headlights	•
Headlight Delay Off	•
Turn headlights	○

Exterior mirrors

Exterior mirror function	• Electric adjustment; • Electric folding; • Heated mirrors; • Automatic folding when locking the car; ○ Auto-dimming (USD 147)
---------------------------------	---

Appearance/anti-theft

Rim material	• Aluminum alloy
Electric trunk	-

Appearance/anti-theft (continued)

Electronic engine immobilizer	<ul style="list-style-type: none">•
Central locking system in the car	<ul style="list-style-type: none">•
Key Type	<ul style="list-style-type: none">• Remote key
Keyless start system	-
Keyless entry function	<ul style="list-style-type: none">• Front row
Appearance Kit	<ul style="list-style-type: none">• Sports style

Skylight/Glass

Sunroof Type	<ul style="list-style-type: none">• Sectional electric sunroof
Front/rear electric windows	Front •/Rear-
One-touch window lifting function	<ul style="list-style-type: none">• Full car
Window anti-pinch function	<ul style="list-style-type: none">•
Car makeup mirror	<ul style="list-style-type: none">• Main driver's lamp; • co-pilot's lamp
Rear wiper	<ul style="list-style-type: none">•
Rain sensor wiper function	<ul style="list-style-type: none">• Rainfall-sensing
Heated water nozzle	<ul style="list-style-type: none">•

Interior and exterior color

Exterior Color	Pale Silver: #C1C2C6; Silver: #D8D8DA; Vintage Green: #00280A; Pepper White: #ECE0C1; Chili Red: #C20016; Thunder Gray: #2F2F3D; British Green: #023D21; Lunar Gray: #747572; Midnight Black: #020506
Interior Color	Carbon, Black, Champion Red: #000000/#990200; Toffee Color: #825A3C

Steering wheel/interior mirror

Steering Wheel Material	<ul style="list-style-type: none">• Leather
Steering wheel position adjustment	<ul style="list-style-type: none">• Manual up and down front and rear adjustment
Multi-function steering wheel	<ul style="list-style-type: none">•
Heated Steering Wheel	-
Steering wheel memory	-

Steering wheel/interior mirror (continued)

Trip computer display screen	• Color
Full LCD instrument panel	-
Interior rearview mirror function	• Automatic anti-glare
HUD Head Up Digital Display	•
Steering Wheel Shift Paddles	•

Intelligent configuration

Connected Car Services	-
OTA Updates	-

Driving Control

Driving mode switch	• Movement; • Economy
Automatic parking	-
Engine start-stop technology	•

Driving Hardware

Front/rear parking radar	Front-/Rear •
Driving Assistance Camera System	• Reversing image

In-car charging

Multimedia/charging port	•USB;•AUX
Number of USB/Type-C ports	• 2 in the front row
Mobile phone wireless charging function	○ Front row
Luggage compartment 12V power socket	•

"●" = Standard equipment

"-" = Not available

"○" = Optional equipment.

Note: These are Chinese market vehicles. Warranty coverage is not available outside of China.