

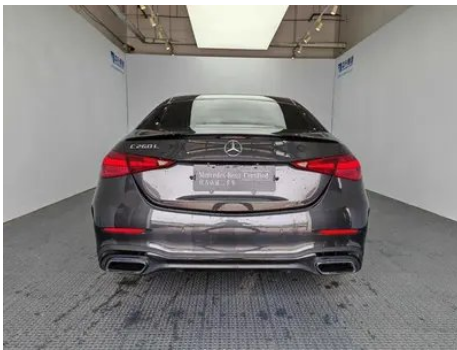
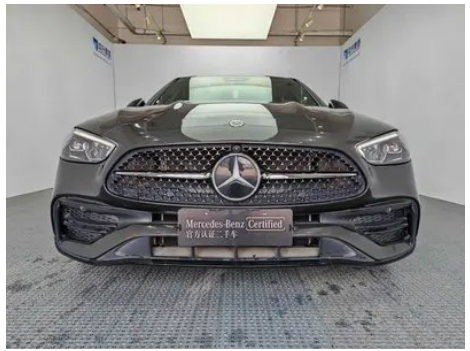
# Vehicle Detail Report

## Mercedes-Benz C-Class 2023 C 260 L Hao Night Sports Edition

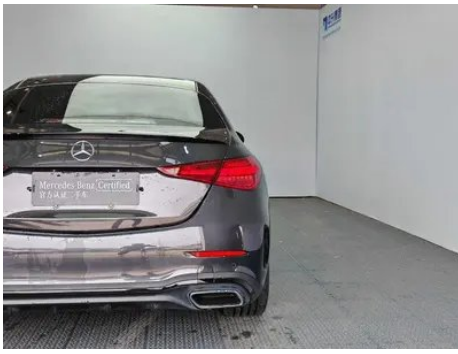
### Basic Information

Brand	Mercedes-Benz
Mileage	32,600 km
Color	Dark gray
First Registration	2023-02-01
Transfer Count	0

### Vehicle Images







## Vehicle Condition

1. Right upper side rail, Paint repair. 2. Front bumper, Scrape. 3. Rear bumper, Paint repair, Scrape. 4. Right rear door, Paint repair, Body panel repair. 5. Right rear quarter panel, Paint repair, Body panel repair.

## Configuration Information

### Model Information

<b>Model Name</b>	Mercedes-Benz C-Class 2023 C 260 L Hao Night Sports Edition
<b>Launch Date</b>	2022.09

### Basic parameters

<b>Vehicle Class</b>	Mid-size car
<b>Energy Type</b>	Gasoline + 48V Mild Hybrid System
<b>Maximum Power (kW)</b>	150
<b>Maximum Torque (N·m)</b>	300
<b>Transmission</b>	9-gear manual integration
<b>Body Type</b>	Sedan
<b>Engine</b>	1.5L 204 hp L4
<b>Dimensions (L×W×H) (mm)</b>	4882*1820*1461
<b>Official 0-100 km/h Acceleration (s)</b>	7.7
<b>Top Speed (km/h)</b>	236
<b>Curb Weight (kg)</b>	1740
<b>Maximum Gross Weight (kg)</b>	2260
<b>WLTP Combined Fuel Consumption (L/100km)</b>	6.35

### engine

<b>Engine Model</b>	254 915
<b>Displacement (mL)</b>	1496
<b>Displacement (L)</b>	1.5
<b>Induction Type</b>	Turbocharging

## engine (continued)

<b>Cylinder Arrangement</b>	L
<b>Number of Cylinders</b>	4
<b>Valves per Cylinder</b>	4
<b>Valve Train</b>	DOHC
<b>Maximum Power (PS)</b>	204
<b>Max Power Speed (rpm)</b>	6100
<b>Max Torque Speed (rpm)</b>	1800-4000
<b>Maximum net power (kW)</b>	150
<b>Fuel Grade</b>	95.
<b>Fuel Delivery System</b>	Direct injection
<b>Cylinder Head Material</b>	Aluminum alloy
<b>Cylinder Block Material</b>	Aluminum alloy
<b>Engine layout</b>	Longitudinal

## Screen/System

<b>Central control color screen</b>	<ul style="list-style-type: none"><li>• Touch LCD screen</li></ul>
<b>Infotainment Screen Size</b>	<ul style="list-style-type: none"><li>• 11.9 inches</li></ul>
<b>Bluetooth/In-car Phone</b>	<ul style="list-style-type: none"><li>•</li></ul>
<b>Smartphone Integration/ Mirroring</b>	<ul style="list-style-type: none"><li>• Apple CarPlay support;</li><li>• Android Auto support</li></ul>
<b>Voice recognition control system</b>	<ul style="list-style-type: none"><li>• Multimedia system;</li><li>• Navigation;</li><li>• Telephone;</li><li>• Air conditioning</li></ul>
<b>In-vehicle intelligent system</b>	<ul style="list-style-type: none"><li>•MBUX</li></ul>
<b>App Store</b>	<ul style="list-style-type: none"><li>•</li></ul>
<b>Voice assistant wake-up word</b>	<ul style="list-style-type: none"><li>• Hello, Mercedes</li></ul>

## Body

<b>Length (mm)</b>	4882
<b>Width (mm)</b>	1820
<b>Height (mm)</b>	1461
<b>Wheelbase (mm)</b>	2954
<b>Front Track (mm)</b>	1589
<b>Rear Track (mm)</b>	1563
<b>Door Opening Type</b>	swing door
<b>Number of Doors</b>	4

## Body (continued)

<b>Number of Seats</b>	5
<b>Fuel Tank Capacity (L)</b>	66
<b>Trunk volume (L)</b>	-
<b>Drag Coefficient (Cd)</b>	-
<b>Approach Angle (°)</b>	15
<b>Departure Angle (°)</b>	18

## Gearbox

<b>Abbreviation</b>	9-gear manual integration
<b>Number of Gears</b>	9
<b>Transmission Type</b>	Automatic Transmission with Manual Mode (AT)

## Chassis steering

<b>Drive Type</b>	Front-engine, Rear-wheel drive (FR)
<b>Front Suspension Type</b>	Multi-link independent suspension
<b>Rear Suspension Type</b>	Multi-link independent suspension
<b>Power Steering Type</b>	Electric power assistance
<b>Vehicle structure</b>	bearing type

## Seat Configuration

<b>Seat Material</b>	<input type="radio"/> Genuine leather; <input type="checkbox"/> Imitation leather
<b>Main seat adjustment</b>	<ul style="list-style-type: none"><li>• Front and rear adjustment;</li><li>• Backrest adjustment;</li><li>• Height adjustment (4-way);</li><li>• Leg rest adjustment;</li><li>• Lumbar support (4-way)</li></ul>
<b>Co-seat adjustment method</b>	<ul style="list-style-type: none"><li>• Front and rear adjustment;</li><li>• Backrest adjustment;</li><li>• Height adjustment (4-way);</li><li>• Leg rest adjustment;</li><li>• Lumbar support (4-way)</li></ul>
<b>Electric adjustment of driver's seat and passenger seat</b>	Main <input type="checkbox"/> /Deputy <input type="checkbox"/>
<b>Front seat functions</b>	<input type="radio"/> Heating (USD 441); <input type="radio"/> Ventilation (USD 1,441)
<b>Electric seat memory function</b>	<input type="radio"/> Driving position
<b>Front passenger seat rear adjustable buttons</b>	<ul style="list-style-type: none"><li>•</li></ul>
<b>Front/rear center armrest</b>	Front <input type="checkbox"/> /Rear <input type="checkbox"/>

## Seat Configuration (continued)

<b>Rear cup holder</b>	•
<b>Second row seat functions</b>	○ Heating (USD 441)
<b>Sports style seats</b>	•

## Active safety

<b>Anti-lock Braking System (ABS)</b>	•
<b>Electronic Brakeforce Distribution (EBD/CBC)</b>	•
<b>Brake Assist System (EBA/BAS/BA)</b>	•
<b>Traction Control System (ASR/TCS/TRC)</b>	•
<b>Electronic Stability Control (ESC/ESP/DSC)</b>	•
<b>Tire Pressure Monitoring System (TPMS)</b>	• Tire pressure display
<b>Seat Belt Reminder</b>	• Full vehicle
<b>ISOFIX Child Seat Anchors</b>	•
<b>Lane Departure Warning System (LDWS)</b>	•
<b>Autonomous Emergency Braking (AEB)</b>	•
<b>Driver Fatigue Detection</b>	•
<b>Forward Collision Warning (FCW)</b>	•
<b>Emergency Call System (eCall)</b>	•
<b>Built-in Dashcam</b>	•

## Air conditioning/refrigerator

<b>Air conditioning temperature control method</b>	• Automatic air conditioning
<b>Rear Independent Climate Control</b>	○(USD 897)
<b>Rear seat air vents</b>	•
<b>Temperature zone control</b>	•
<b>Car air purifier</b>	•
<b>In-cabin PM2.5 Filter</b>	•
<b>Negative ion generator</b>	○

## Air conditioning/refrigerator (continued)

<b>Car fragrance device</b>	○
<b>Air quality monitoring</b>	•

## Passive safety

<b>Driver/passenger airbag</b>	Main •/Deputy •
<b>Front/rear side airbags</b>	Front •/Rear-
<b>Front/rear head airbags (curtain airbags)</b>	Front •/Rear •
<b>Passive pedestrian protection</b>	•

## Wheel brake

<b>Front Brake Type</b>	Ventilation disc
<b>Rear Brake Type</b>	Ventilation disc
<b>Parking brake type</b>	Electronic Parking
<b>Front Tire Size</b>	225/45 R18
<b>Rear Tire Size</b>	255/40 R18
<b>Spare Tire Size</b>	None

## Audio/Interior Lighting

<b>Speaker Brand Name</b>	• Burmester Voices of Berlin
<b>Number of speakers</b>	•15 speakers
<b>Interior ambient lighting</b>	• 64 colors
<b>Touch reading light</b>	•

## Driving functions

<b>Navigation traffic information display</b>	•
<b>Lane assist</b>	•
<b>Lane Keeping Assist System</b>	•
<b>Cruise control system</b>	• Full speed adaptive cruise
<b>Satellite navigation system</b>	•
<b>Driving assistance level</b>	•L2
<b>Lane centering</b>	○
<b>Road traffic sign recognition</b>	○
<b>Map Brand</b>	• Gaud
<b>AR real-time navigation</b>	○

## Driving functions (continued)

<b>Parking Assist</b>	•
-----------------------	---

## Exterior lighting

<b>Low beam light source</b>	•LED
<b>High beam light source</b>	•LED
<b>LED daytime running lights</b>	•
<b>Adaptive high and low beam</b>	•
<b>Automatic headlights</b>	•
<b>Height-adjustable headlights</b>	•
<b>Headlight Delay Off</b>	•
<b>Lighting features</b>	○ Pixel-based
<b>Turn headlights</b>	○

## Exterior mirrors

<b>Exterior mirror function</b>	• Electric adjustment; • Electric folding; ○ Mirror memory; • Heated mirrors; • Automatic down-folding on reverse; • Automatic folding upon locking; • Auto-dimming
---------------------------------	---

## Appearance/anti-theft

<b>Rim material</b>	• Aluminum alloy
<b>Electric trunk</b>	○(USD 382)
<b>Electronic engine immobilizer</b>	•
<b>Central locking system in the car</b>	•
<b>Key Type</b>	• Remote key
<b>Keyless start system</b>	•
<b>Keyless entry function</b>	○ Full vehicle (USD 721)
<b>Appearance Kit</b>	• Sports style
<b>Hands-free Trunk</b>	○
<b>Remote start function</b>	•

## Skylight/Glass

<b>Sunroof Type</b>	• Sectional electric sunroof
<b>Front/rear electric windows</b>	Front •/Rear •
<b>One-touch window lifting function</b>	• Full vehicle

## Skylight/Glass (continued)

<b>Window anti-pinch function</b>	<ul style="list-style-type: none"><li>•</li></ul>
<b>Car makeup mirror</b>	<ul style="list-style-type: none"><li>• Main driver's lamp; • co-pilot's lamp</li></ul>
<b>Rear wiper</b>	-
<b>Rain sensor wiper function</b>	<ul style="list-style-type: none"><li>• Rainfall-sensing</li></ul>

## Interior and exterior color

<b>Exterior Color</b>	Arctic White #F4F4F4 sea night blue #143882 Fritillaria White #E6E6E6 Hao Sha Yin #D7DCDC Graphite gray #4E5158 Spacetime Silver #ACACAE turquoise green #193A48 obsidian black #000000 Iridium Silver #D7DBE9 Lava Red #B52E39
<b>Interior Color</b>	Black flame red #000000 #621C27 Black #000000 Black Macchiato beige #000000 #D4D0CF Black titanium gray #000000 #2C2D31 Black OCHRE BROWN #000000 #773B34

## Steering wheel/interior mirror

<b>Steering Wheel Material</b>	<ul style="list-style-type: none"><li>• Leather</li></ul>
<b>Steering wheel position adjustment</b>	<ul style="list-style-type: none"><li>• Manual up and down front and rear adjustment; ○ Electric up and down front and rear adjustment</li></ul>
<b>Multi-function steering wheel</b>	<ul style="list-style-type: none"><li>•</li></ul>
<b>Heated Steering Wheel</b>	-
<b>Steering wheel memory</b>	○
<b>Trip computer display screen</b>	<ul style="list-style-type: none"><li>• Color</li></ul>
<b>Full LCD instrument panel</b>	<ul style="list-style-type: none"><li>•</li></ul>
<b>LCD instrument size</b>	<ul style="list-style-type: none"><li>• 12.3 inches</li></ul>
<b>Interior rearview mirror function</b>	<ul style="list-style-type: none"><li>• Automatic anti-glare</li></ul>
<b>Gear shifting</b>	<ul style="list-style-type: none"><li>• Electronic gear shift</li></ul>
<b>HUD Head Up Digital Display</b>	○(USD 1,324)
<b>ETC Device</b>	○(USD 441)
<b>Steering Wheel Shift Paddles</b>	<ul style="list-style-type: none"><li>•</li></ul>

## Intelligent configuration

<b>Connected Car Services</b>	•
<b>OTA Updates</b>	•
<b>4G/5G Network</b>	•4G
<b>Mobile APP remote function</b>	• Door control Vehicle start Vehicle Condition Query Diagnosis Vehicle positioning Find car Car Owner Services (Find charging pile Gas station Parking, etc.) Appointment maintenance Maintenance
<b>Wi-Fi hotspots</b>	•

## Driving Control

<b>Driving mode switch</b>	• Sport; • Economy; • Standard/Comfort
<b>Automatic parking</b>	•
<b>Hill start assist</b>	•
<b>Energy recovery system</b>	•
<b>Variable steering ratio</b>	•
<b>Engine start-stop technology</b>	•

## Driving Hardware

<b>Front/rear parking radar</b>	Front •/Rear •
<b>Driving Assistance Camera System</b>	• Reversing image; ○ 360-degree panoramic image (USD 618)
<b>Front perception camera</b>	• Monocular
<b>Number of cameras</b>	• 2; ○ 5
<b>Number of ultrasonic radars</b>	• 12

## In-car charging

<b>Multimedia/charging port</b>	•Type-C
<b>Number of USB/Type-C ports</b>	• 3 in the front row/2 in the back row; ○ 4 in the front row/2 in the back row (USD 397)
<b>Mobile phone wireless charging function</b>	• Front row

## Optional Package

## Optional Package (continued)

<b>Optional Package</b>	Zhilian package (USD 441; Including: MBUX intelligent human-computer interaction system real-life navigation, MBUX intelligent human-computer interaction system (upgraded version)); Zhixiang package (USD 585; Including: MBUX intelligent human-computer interaction system (upgraded version), in-car air conditioning components, and refreshing function); Smart driving suit (USD 2,735; Including: rear-view mirror assembly, electrically adjustable driver's seat with memory function, driver assistance unit enhanced version)
-------------------------	--

---

"●" = Standard equipment

"-" = Not available

"○" = Optional equipment.

Note: These are Chinese market vehicles. Warranty coverage is not available outside of China.