

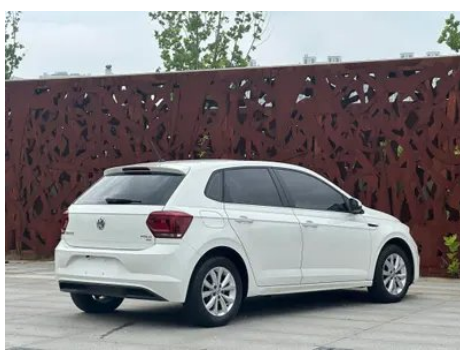
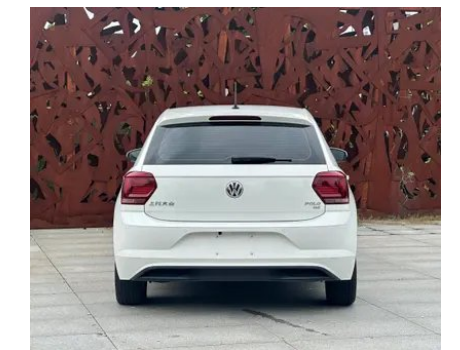
Vehicle Detail Report

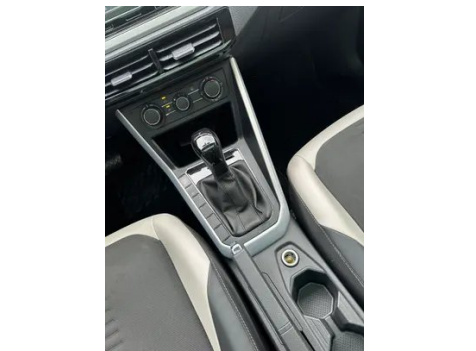
Volkswagen Polo 2019 Plus 1.5L Automatic Colorful Technology Edition

Basic Information

Brand	Volkswagen
Mileage	82,000 km
Color	White
First Registration	2021-03-01
Transfer Count	0

Vehicle Images







Vehicle Condition

1. Right rocker panel, Paint repair, Outer-side deformation. 2. Driver's seat rails and frame, Signs of removal. 3. Right rear quarter panel, Paint repair, Body panel repair.

Configuration Information

Model Information

Model Name	Polo 2019 Plus 1.5L Automatic Colorful Tech Edition
Launch Date	2019.06

Basic parameters

Vehicle Class	Small car
Energy Type	Gasoline
Maximum Power (kW)	83
Maximum Torque (N·m)	145
Transmission	6-speed manual integration
Body Type	Hatchback
Engine	1.5L 113 horsepower L4
Dimensions (L×W×H) (mm)	4053*1740*1449
Official 0-100 km/h Acceleration (s)	13
Top Speed (km/h)	185
Curb Weight (kg)	1190
Maximum Gross Weight (kg)	-
NEDC Combined Fuel Consumption (L/100km)	5.5

engine

Engine Model	EA211-DMB
Displacement (mL)	1498
Displacement (L)	1.5
Induction Type	Natural aspiration

engine (continued)

Cylinder Arrangement	L
Number of Cylinders	4
Valves per Cylinder	4
Valve Train	DOHC
Maximum Power (PS)	113
Max Power Speed (rpm)	6000
Max Torque Speed (rpm)	3900
Maximum net power (kW)	83
Fuel Grade	92.
Fuel Delivery System	Multi-point EFI
Cylinder Head Material	Aluminum alloy
Cylinder Block Material	Aluminum alloy
Engine layout	Horizontal

Screen/System

Central control color screen	<ul style="list-style-type: none">• Touch LCD screen
Infotainment Screen Size	<ul style="list-style-type: none">•6.5 inches
Bluetooth/In-car Phone	<ul style="list-style-type: none">•
Smartphone Integration/ Mirroring	<ul style="list-style-type: none">• Support CarPlay;• Support CarLife;• Factory interconnection/ mapping

Body

Length (mm)	4053
Width (mm)	1740
Height (mm)	1449
Wheelbase (mm)	2564
Front Track (mm)	1522
Rear Track (mm)	1506
Door Opening Type	swing door
Number of Doors	5
Number of Seats	5
Fuel Tank Capacity (L)	42.5
Trunk volume (L)	310-1003
Drag Coefficient (Cd)	-
Approach Angle (°)	15

Body (continued)

Departure Angle (°)	20
----------------------------	----

Gearbox

Abbreviation	6-speed manual integration
Number of Gears	6
Transmission Type	Automatic Transmission with Manual Mode (AT)

Chassis steering

Drive Type	Front-engine, Front-wheel drive (FF)
Front Suspension Type	MacPherson independent suspension
Rear Suspension Type	Torsion beam non-independent suspension
Power Steering Type	Electric power assistance
Vehicle structure	bearing type

Seat Configuration

Seat Material	• Leather/fabric mix-and-match
Main seat adjustment	• Front and rear adjustment; • Backrest adjustment; • Height adjustment (2-way)
Co-seat adjustment method	• Front and rear adjustment; • Backrest adjustment
Electric adjustment of driver's seat and passenger seat	-
Front passenger seat rear adjustable buttons	-
Rear seat folding	• Overall down
Front/rear center armrest	Front •/Rear-
Rear cup holder	-

Active safety

Anti-lock Braking System (ABS)	•
Electronic Brakeforce Distribution (EBD/CBC)	•
Brake Assist System (EBA/BAS/BA)	•
Traction Control System (ASR/TCS/TRC)	•
Electronic Stability Control (ESC/ESP/DSC)	•

Active safety (continued)

Tire Pressure Monitoring System (TPMS)	• Tire pressure alarm
Seat Belt Reminder	• Full car
ISOFIX Child Seat Anchors	•
Lane Departure Warning System (LDWS)	-
Autonomous Emergency Braking (AEB)	•
Driver Fatigue Detection	-

Air conditioning/refrigerator

Air conditioning temperature control method	• Manual air conditioning
Rear Independent Climate Control	-
Rear seat air vents	-
Temperature zone control	-
Car air purifier	-
In-cabin PM2.5 Filter	•

Passive safety

Driver/passenger airbag	Main •/Deputy •
Front/rear side airbags	Front •/Rear-
Front/rear head airbags (curtain airbags)	Front •/Rear •

Wheel brake

Front Brake Type	Ventilation disc
Rear Brake Type	Drum type
Parking brake type	handbrake
Front Tire Size	185/65 R15
Rear Tire Size	-
Spare Tire Size	Not full-size

Audio/Interior Lighting

Speaker Brand Name	○Beats
Number of speakers	• 4 horns; ○ 8 horns

Driving functions

Navigation traffic information display	-
---	---

Driving functions (continued)

Lane assist	-
Lane Keeping Assist System	-
Cruise control system	• Cruise control
Satellite navigation system	-
Parking Assist	-

Exterior lighting

Low beam light source	• Halogen
High beam light source	• Halogen
LED daytime running lights	-
Adaptive high and low beam	-
Automatic headlights	-
Height-adjustable headlights	•
Headlight Delay Off	-

Exterior mirrors

Exterior mirror function	• Electric adjustment; • Mirror heating
---------------------------------	---

Appearance/anti-theft

Rim material	• Aluminum alloy
Electric trunk	-
Electronic engine immobilizer	•
Central locking system in the car	•
Key Type	• Remote key
Keyless start system	-

Skylight/Glass

Sunroof Type	• Electric sunroof
Front/rear electric windows	Front •/Rear •
One-touch window lifting function	• Full car
Window anti-pinch function	•

Skylight/Glass (continued)

Car makeup mirror	<ul style="list-style-type: none">• Main driver's lamp; • co-pilot's lamp
Rear wiper	<ul style="list-style-type: none">•

Interior and exterior color

Exterior Color	Royal Blue:#1C52AC; Van Gogh Gold:#F1C15D; Polar White:#FFFFFF; Roman Red:#B91119; Pearlescent Silver:#B8B5A6
Interior Color	Black/Grey:#464B51/#757F89

Steering wheel/interior mirror

Steering Wheel Material	<ul style="list-style-type: none">• Plastic
Steering wheel position adjustment	<ul style="list-style-type: none">• Manual up and down front and rear adjustment
Multi-function steering wheel	<ul style="list-style-type: none">•
Heated Steering Wheel	-
Steering wheel memory	-
Trip computer display screen	<ul style="list-style-type: none">• Monochrome
Full LCD instrument panel	-
Interior rearview mirror function	<ul style="list-style-type: none">• Manual anti-glare

Intelligent configuration

Connected Car Services	-
OTA Updates	-

Driving Control

Driving mode switch	<ul style="list-style-type: none">• Movement
Automatic parking	-
Hill start assist	<ul style="list-style-type: none">•
Engine start-stop technology	<ul style="list-style-type: none">•

Driving Hardware

Front/rear parking radar	Front-/Rear •
---------------------------------	---------------

In-car charging

Multimedia/charging port	<ul style="list-style-type: none">•USB;•SD
Number of USB/Type-C ports	<ul style="list-style-type: none">• 1 in the front row

"●" = Standard equipment

"□" = Not available

"○" = Optional equipment.

Note: These are Chinese market vehicles. Warranty coverage is not available outside of China.