

Vehicle Detail Report

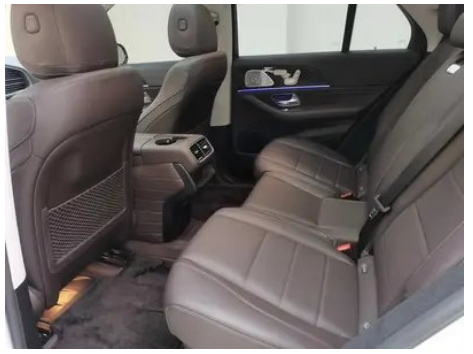
Mercedes-Benz GLE (Imported) 2023 GLE 350 4MATIC Fashionable

Basic Information

Brand	Mercedes-Benz
Mileage	49,000 km
Color	White
First Registration	2023-04-01
Transfer Count	0

Vehicle Images







Vehicle Condition

1. Driver's seat rails and frame, Signs of removal.

Configuration Information

Model Information

Model Name	Mercedes-Benz GLE 2023 GLE 350 4MATIC Fashionable
Launch Date	2022.11

Basic parameters

Vehicle Class	Mid-size and large SUVs
Energy Type	Gasoline
Maximum Power (kW)	190
Maximum Torque (N·m)	370
Transmission	9-gear manual integration
Body Type	SUV
Engine	2.0T 258 horsepower L4
Dimensions (L×W×H) (mm)	4930*2010*1797
Official 0-100 km/h Acceleration (s)	7.4
Top Speed (km/h)	218
Curb Weight (kg)	2206
Maximum Gross Weight (kg)	2820
WLTP Combined Fuel Consumption (L/100km)	9.8

engine

Engine Model	264 920
Displacement (mL)	1991
Displacement (L)	2.0
Induction Type	Turbocharging
Cylinder Arrangement	L

engine (continued)

Number of Cylinders	4
Valves per Cylinder	4
Valve Train	DOHC
Maximum Power (PS)	258
Max Power Speed (rpm)	6100
Max Torque Speed (rpm)	1800-4000
Maximum net power (kW)	190
Fuel Grade	95.
Fuel Delivery System	Direct injection
Cylinder Head Material	Aluminum alloy
Cylinder Block Material	Aluminum alloy
Engine layout	Longitudinal

Screen/System

Central control color screen	<ul style="list-style-type: none">• Touch LCD screen
Infotainment Screen Size	<ul style="list-style-type: none">• 12.3 inches
Bluetooth/In-car Phone	<ul style="list-style-type: none">•
Smartphone Integration/Mirroring	<ul style="list-style-type: none">• Support CarPlay;• Support CarLife;• Support Android Auto
Voice recognition control system	<ul style="list-style-type: none">• Multimedia system;• Navigation;• Telephone;• Air conditioning
In-vehicle intelligent system	<ul style="list-style-type: none">• MBUX

Body

Length (mm)	4930
Width (mm)	2010
Height (mm)	1797
Wheelbase (mm)	2995
Front Track (mm)	1679
Rear Track (mm)	1728
Door Opening Type	swing door
Number of Doors	5
Number of Seats	5
Fuel Tank Capacity (L)	85
Trunk volume (L)	-

Body (continued)

Drag Coefficient (Cd)	-
Approach Angle (°)	25.7
Departure Angle (°)	24.6

Gearbox

Abbreviation	9-gear manual integration
Number of Gears	9
Transmission Type	Automatic Transmission with Manual Mode (AT)

Chassis steering

Drive Type	Front-engine, All-wheel drive (F-AWD)
Four-wheel drive	Full-time four-wheel drive
Central differential structure	Multi-plate clutch
Front Suspension Type	Double wishbone independent suspension
Rear Suspension Type	Multi-link independent suspension
Power Steering Type	Electric power assistance
Vehicle structure	bearing type

Seat Configuration

Seat Material	• Imitation leather
Main seat adjustment	• Front and rear adjustment; • Backrest adjustment; • Height adjustment (4-way); • Lumbar support (4-way)
Co-seat adjustment method	• Front and rear adjustment; • Backrest adjustment; • Height adjustment (4-way); • Lumbar support (4-way)
Electric adjustment of driver's seat and passenger seat	Main •/Deputy •
Front seat functions	• Heating; ○ Ventilation (USD 1,544)
Front passenger seat rear adjustable buttons	•
Second row seat adjustment	• Front and rear adjustment; • Backrest adjustment
Rear seat folding	• Proportional down
Front/rear center armrest	Front •/Rear •
Rear cup holder	•

Seat Configuration (continued)

Second row seats electrically adjustable	•
---	---

Active safety

Anti-lock Braking System (ABS)	•
Electronic Brakeforce Distribution (EBD/CBC)	•
Brake Assist System (EBA/BAS/BA)	•
Traction Control System (ASR/TCS/TRC)	•
Electronic Stability Control (ESC/ESP/DSC)	•
Tire Pressure Monitoring System (TPMS)	• Tire pressure display
Seat Belt Reminder	• Full car
ISOFIX Child Seat Anchors	•
Lane Departure Warning System (LDWS)	•
Autonomous Emergency Braking (AEB)	•
Driver Fatigue Detection	•
Forward Collision Warning (FCW)	•
Emergency Call System (eCall)	•

Air conditioning/refrigerator

Air conditioning temperature control method	• Automatic air conditioning
Rear Independent Climate Control	-
Rear seat air vents	•
Temperature zone control	•
Car air purifier	•
In-cabin PM2.5 Filter	•

Passive safety

Driver/passenger airbag	Main •/Deputy •
Front/rear side airbags	Front •/Rear •

Passive safety (continued)

Front/rear head airbags (curtain airbags)	Front •/Rear •
--	----------------

Wheel brake

Front Brake Type	Ventilation disc
Rear Brake Type	Disc
Parking brake type	Electronic Parking
Front Tire Size	275/50 R20
Rear Tire Size	275/50 R20
Spare Tire Size	None

Audio/Interior Lighting

Speaker Brand Name	<input type="radio"/> Burmester Voices of Berlin (USD 1,765)
Number of speakers	<input type="radio"/> 13 horn; • 10-11 horn
Interior ambient lighting	• 64 colors

Driving functions

Navigation traffic information display	•
Lane assist	•
Lane Keeping Assist System	•
Cruise control system	• Cruise control
Satellite navigation system	•
Map Brand	• Gaud
Parking Assist	•

Exterior lighting

Low beam light source	•LED
High beam light source	•LED
LED daytime running lights	•
Adaptive high and low beam	•
Automatic headlights	•
Height-adjustable headlights	•
Headlight Delay Off	•
Lighting features	<input type="radio"/> Geometric multi-beam (USD 2,618)

Exterior lighting (continued)

Turn headlights	○
-----------------	---

Exterior mirrors

Exterior mirror function	<ul style="list-style-type: none">• Electric adjustment;• Electric folding;• Rearview mirror heating;• Automatic folding when locking the car;• Automatic anti-glare
--------------------------	--

Appearance/anti-theft

Rim material	<ul style="list-style-type: none">• Aluminum alloy
Electric trunk	<ul style="list-style-type: none">•
Electronic engine immobilizer	<ul style="list-style-type: none">•
Central locking system in the car	<ul style="list-style-type: none">•
Key Type	<ul style="list-style-type: none">• Remote key
Keyless start system	<ul style="list-style-type: none">•
Keyless entry function	<ul style="list-style-type: none">• Full car
Appearance Kit	<ul style="list-style-type: none">• Sports style
Hands-free Trunk	<ul style="list-style-type: none">•
Electric trunk position memory	<ul style="list-style-type: none">•
Roof rack	<ul style="list-style-type: none">•
Remote start function	<ul style="list-style-type: none">•

Skylight/Glass

Sunroof Type	<ul style="list-style-type: none">• Openable panoramic sunroof
Front/rear electric windows	Front •/Rear •
One-touch window lifting function	<ul style="list-style-type: none">• Full car
Window anti-pinch function	<ul style="list-style-type: none">•
Car makeup mirror	<ul style="list-style-type: none">• Main driver's lamp;• co-pilot's lamp
Rear wiper	<ul style="list-style-type: none">•
Rain sensor wiper function	<ul style="list-style-type: none">• Rainfall-sensing

Interior and exterior color

Interior and exterior color (continued)

Exterior Color	Moonlight Lime: #62686C, Grandmother Stone Green:#274A3B, Obsidian Black:#000000, Arctic White:#FFFFFFE9, Zirconium Quartz, Red, # AF021C; Hao Sha Yin:#AAB4BE, Spacetime Silver:#B1B2B7, Diamond White:#EFEBEA
Interior Color	Machiduo, Beige, Black, #AEA49E/#000000, Black coffee, Brown, #000000/#262020, Black:#000000

Steering wheel/interior mirror

Steering Wheel Material	• Leather
Steering wheel position adjustment	• Manual up and down front and rear adjustment
Multi-function steering wheel	•
Heated Steering Wheel	-
Steering wheel memory	-
Trip computer display screen	• Color
Full LCD instrument panel	•
LCD instrument size	• 12.3 inches
Interior rearview mirror function	• Automatic anti-glare
Gear shifting	• Electronic gear shift
HUD Head Up Digital Display	○(USD 2,279)
ETC Device	○(USD 441)
Steering Wheel Shift Paddles	•

Intelligent configuration

Connected Car Services	•
OTA Updates	•
4G/5G Network	•4G
Mobile APP remote function	• Door control; • Vehicle start-up; • Vehicle condition inquiry/diagnosis; • Vehicle location/vehicle search

Driving Control

Driving Control (continued)

Driving mode switch	• Sport; • Economy; • Standard/Comfort; • Off-Road; • Custom/Personalized
Automatic parking	•
Steep slope descent	•
Hill start assist	•
Variable steering ratio	•
Engine start-stop technology	•

Driving Hardware

Front/rear parking radar	Front •/Rear •
Driving Assistance Camera System	• Reversing image

In-car charging

Multimedia/charging port	•Type-C
Number of USB/Type-C ports	• 3 in the front row/2 in the back row
Luggage compartment 12V power socket	•

"●" = Standard equipment

"_" = Not available

"○" = Optional equipment.

Note: These are Chinese market vehicles. Warranty coverage is not available outside of China.