

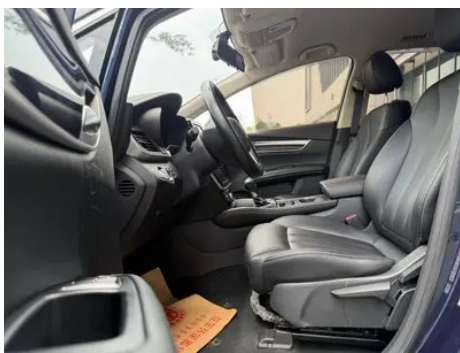
Vehicle Detail Report

BYD Song MAX 2017 1.5T Auto Zhilian Luxury
Model 7 seat

Basic Information

| | |
|--------------------|------------|
| Brand | BYD |
| Mileage | 80,000 km |
| Color | Blue |
| First Registration | 2018-11-01 |
| Transfer Count | 1 |

Vehicle Images





Vehicle Condition

1. Left rear frame rail, Corrosion. 2. Right rear frame rail, Corrosion. 3. Right rocker panel, Inner-side deformation. 4. Inner side of left B-pillar, Non-accident-related deformation. 5. Rear body panel, Deformation. 6. Left rear quarter panel, Deformation.

Configuration Information

Model Information

| | |
|--------------------|---|
| Model Name | BYD Song MAX 2017 1.5T Auto Zhilian Luxury Model 7 seat |
| Launch Date | 2017.09 |

Basic parameters

| | |
|----------------------|-------------|
| Vehicle Class | Compact MPV |
| Energy Type | Gasoline |

Basic parameters (continued)

| | |
|---|-------------------------|
| Maximum Power (kW) | 113 |
| Maximum Torque (N·m) | 240 |
| Transmission | 6-speed wet dual-clutch |
| Body Type | MPV |
| Engine | 1.5T 154 horsepower L4 |
| Dimensions (L×W×H) (mm) | 4680*1810*1680 |
| Official 0-100 km/h Acceleration (s) | - |
| Top Speed (km/h) | - |
| Curb Weight (kg) | 1665 |
| Maximum Gross Weight (kg) | - |
| NEDC Combined Fuel Consumption (L/100km) | 7.6 |

engine

| | |
|--------------------------------|------------------|
| Engine Model | BYD476ZQA |
| Displacement (mL) | 1497 |
| Displacement (L) | 1.5 |
| Induction Type | Turbocharging |
| Cylinder Arrangement | L |
| Number of Cylinders | 4 |
| Valves per Cylinder | 4 |
| Valve Train | DOHC |
| Maximum Power (PS) | 154 |
| Max Power Speed (rpm) | 5200 |
| Max Torque Speed (rpm) | 1750-3500 |
| Maximum net power (kW) | - |
| Fuel Grade | 92. |
| Fuel Delivery System | Direct injection |
| Cylinder Head Material | Aluminum alloy |
| Cylinder Block Material | Aluminum alloy |

Screen/System

| | |
|-------------------------------------|--|
| Central control color screen | <ul style="list-style-type: none">• Touch LCD screen |
| Infotainment Screen Size | <ul style="list-style-type: none">• 12.8 inches |

Screen/System (continued)

| | |
|---|--|
| Bluetooth/In-car Phone | <ul style="list-style-type: none">• |
| Smartphone Integration/Mirroring | <ul style="list-style-type: none">• OEM smartphone integration/mirroring |
| Voice recognition control system | <ul style="list-style-type: none">• Multimedia system;• Navigation;• Telephone;• Air conditioning |

Body

| | |
|-------------------------------|------|
| Length (mm) | 4680 |
| Width (mm) | 1810 |
| Height (mm) | 1680 |
| Wheelbase (mm) | 2785 |
| Front Track (mm) | 1540 |
| Rear Track (mm) | 1530 |
| Door Opening Type | - |
| Number of Doors | 5 |
| Number of Seats | 7 |
| Fuel Tank Capacity (L) | 62 |
| Trunk volume (L) | - |
| Drag Coefficient (Cd) | - |

Gearbox

| | |
|--------------------------|------------------------------------|
| Abbreviation | 6-speed wet dual-clutch |
| Number of Gears | 6 |
| Transmission Type | Wet Dual-Clutch Transmission (DCT) |

Chassis steering

| | |
|------------------------------|---|
| Drive Type | Front-engine, Front-wheel drive (FF) |
| Front Suspension Type | MacPherson independent suspension |
| Rear Suspension Type | Torsion beam non-independent suspension |
| Power Steering Type | Mechanical hydraulic power steering |
| Vehicle structure | bearing type |

Seat Configuration

| | |
|----------------------------------|---|
| Seat Material | <ul style="list-style-type: none">• Imitation leather |
| Main seat adjustment | <ul style="list-style-type: none">• Front and rear adjustment;• Backrest adjustment;• Height adjustment (2-way) |
| Co-seat adjustment method | <ul style="list-style-type: none">• Front and rear adjustment;• Backrest adjustment |

Seat Configuration (continued)

| | |
|--|--|
| Electric adjustment of driver's seat and passenger seat | - |
| Front passenger seat rear adjustable buttons | - |
| Second row seat adjustment | • Front and rear adjustment; • Backrest adjustment |
| Rear seat folding | • Proportional down |
| Front/rear center armrest | Front •/Rear • |
| Rear cup holder | • |
| Seat Layout | •2-3-2 |

Active safety

| | |
|---|-------------|
| Anti-lock Braking System (ABS) | • |
| Electronic Brakeforce Distribution (EBD/CBC) | • |
| Brake Assist System (EBA/BAS/BA) | • |
| Traction Control System (ASR/TCS/TRC) | • |
| Electronic Stability Control (ESC/ESP/DSC) | • |
| Seat Belt Reminder | • Front row |
| ISOFIX Child Seat Anchors | • |
| Lane Departure Warning System (LDWS) | - |
| Autonomous Emergency Braking (AEB) | - |
| Driver Fatigue Detection | - |

Air conditioning/refrigerator

| | |
|--|------------------------------|
| Air conditioning temperature control method | • Automatic air conditioning |
| Rear Independent Climate Control | • |
| Rear seat air vents | • |
| Temperature zone control | • |
| Car air purifier | - |
| In-cabin PM2.5 Filter | - |

Passive safety

Passive safety (continued)

| | |
|--|-----------------|
| Driver/passenger airbag | Main •/Deputy • |
| Front/rear side airbags | Front •/Rear- |
| Front/rear head airbags (curtain airbags) | - |

Wheel brake

| | |
|---------------------------|--------------------|
| Front Brake Type | Ventilation disc |
| Rear Brake Type | Disc |
| Parking brake type | Electronic Parking |
| Front Tire Size | 215/55 R17 |
| Rear Tire Size | 215/55 R17 |
| Spare Tire Size | Not full-size |

Audio/Interior Lighting

| | |
|---------------------------|--------------|
| Number of speakers | • 6 speakers |
|---------------------------|--------------|

Driving functions

| | |
|---|---|
| Navigation traffic information display | • |
| Lane assist | - |
| Lane Keeping Assist System | - |
| Satellite navigation system | • |
| Parking Assist | - |

Exterior lighting

| | |
|-------------------------------------|------------------|
| Low beam light source | • Halogen; ○ LED |
| High beam light source | • Halogen; ○ LED |
| LED daytime running lights | • |
| Adaptive high and low beam | - |
| Automatic headlights | ○ |
| Front fog lights | •LED |
| Height-adjustable headlights | • |
| Headlight Delay Off | - |
| Lighting features | ○ Matrix |

Exterior mirrors

| | |
|---------------------------------|-----------------------|
| Exterior mirror function | • Electric adjustment |
|---------------------------------|-----------------------|

Appearance/anti-theft

| | |
|--|------------------|
| Rim material | • Aluminum alloy |
| Electronic engine immobilizer | • |
| Central locking system in the car | • |
| Key Type | • Remote key |
| Keyless start system | • |
| Keyless entry function | • Front row |
| Remote start function | • |

Skylight/Glass

| | |
|------------------------------------|---|
| Front/rear electric windows | Front •/Rear • |
| Window anti-pinch function | - |
| Car makeup mirror | • Main driver's lamp; • co-pilot's lamp |
| Rear wiper | • |

Interior and exterior color

| | |
|-----------------------|--|
| Exterior Color | Crystal White #FFFFFF Delanhei #040000 Amber Gold #786E42 ink blue #18284C Swiss Silver #AAAAAA Diamond Blue #0048E3 |
| Interior Color | Black:#000000; Black/Brown:#000000/#925655 |

Steering wheel/interior mirror

| | |
|---|--|
| Steering Wheel Material | • Cortex |
| Steering wheel position adjustment | • Manual up and down front and rear adjustment |
| Multi-function steering wheel | • |
| Heated Steering Wheel | - |
| Steering wheel memory | - |
| Trip computer display screen | • Color |
| Full LCD instrument panel | - |
| Interior rearview mirror function | • Manual anti-glare |

Intelligent configuration

| | |
|-------------------------------|---|
| Connected Car Services | • |
|-------------------------------|---|

Intelligent configuration (continued)

| | |
|--------------------|---|
| OTA Updates | - |
|--------------------|---|

Driving Control

| | |
|----------------------------|------------|
| Driving mode switch | • Movement |
| Automatic parking | - |
| Hill start assist | • |

Driving Hardware

| | |
|---|--|
| Front/rear parking radar | Front-/Rear • |
| Driving Assistance Camera System | • Reversing image; • Vehicle side blind area image |

In-car charging

| | |
|-----------------------------------|--|
| Multimedia/charging port | •USB;•AUX;•SD |
| Number of USB/Type-C ports | • 2 in the front row/2 in the back row |

"●" = Standard equipment

"-" = Not available

"○" = Optional equipment.

Note: These are Chinese market vehicles. Warranty coverage is not available outside of China.