

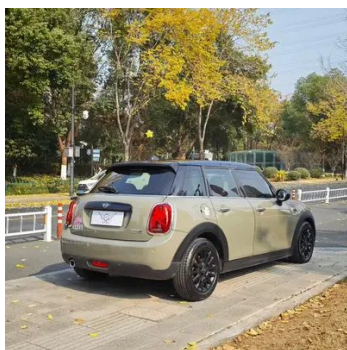
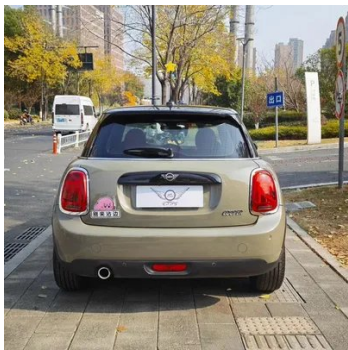
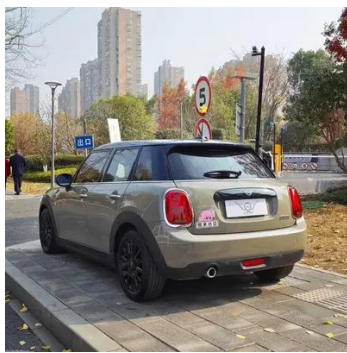
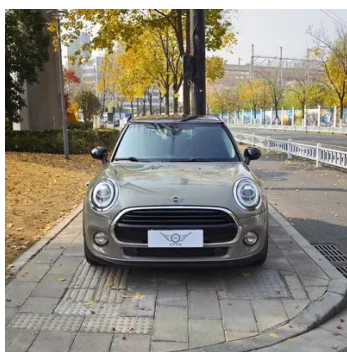
Vehicle Detail Report

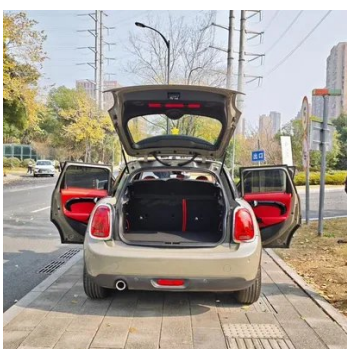
MINI 2018 1.5T COOPER classic school Five-door version

Basic Information

Brand	MINI
Mileage	82,700 km
Color	Dark gray
First Registration	2019-03-01
Transfer Count	2

Vehicle Images





Vehicle Condition

1. Inner side of left B-pillar, Non-accident-related deformation. 2. Driver seat rails and frame, Signs of disassembly. 3. Passenger seat rails and frame, Signs of disassembly.

Configuration Information

Model Information

Model Information (continued)

Model Name	MINI 2018 1.5T COOPER classic school Five-door version
Launch Date	2018.05

Basic parameters

Vehicle Class	Small car
Energy Type	Gasoline
Maximum Power (kW)	100
Maximum Torque (N·m)	220
Transmission	7-speed wet dual-clutch
Body Type	Hatchback
Engine	1.5L 136 hp L3
Dimensions (L×W×H) (mm)	3993*1727*1464
Official 0-100 km/h Acceleration (s)	8.1
Top Speed (km/h)	207
Curb Weight (kg)	-
Maximum Gross Weight (kg)	-
NEDC Combined Fuel Consumption (L/100km)	5.6

engine

Engine Model	B38A15A
Displacement (mL)	1499
Displacement (L)	1.5
Induction Type	Turbocharging
Cylinder Arrangement	L
Number of Cylinders	3
Valves per Cylinder	4
Compression Ratio	11
Valve Train	DOHC
Bore (mm)	82
Stroke (mm)	94.6
Maximum Power (PS)	136
Max Power Speed (rpm)	3900-6500
Max Torque Speed (rpm)	1480-4100

engine (continued)

Maximum net power (kW)	-
Fuel Grade	95.
Fuel Delivery System	Direct injection
Cylinder Head Material	Aluminum alloy
Cylinder Block Material	Aluminum alloy
Engine layout	Horizontal

Screen/System

Central control color screen	<ul style="list-style-type: none">• Touch LCD screen
Infotainment Screen Size	<ul style="list-style-type: none">• 8.8 inches
Bluetooth/In-car Phone	<ul style="list-style-type: none">•
Smartphone Integration/Mirroring	<ul style="list-style-type: none">○ Supports CarPlay
Voice recognition control system	<ul style="list-style-type: none">• Multimedia system;• Telephone

Body

Length (mm)	3993
Width (mm)	1727
Height (mm)	1464
Wheelbase (mm)	2567
Front Track (mm)	1501
Rear Track (mm)	1501
Door Opening Type	swing door
Number of Doors	5
Number of Seats	5
Trunk volume (L)	278-941
Drag Coefficient (Cd)	-

Gearbox

Abbreviation	7-speed wet dual-clutch
Number of Gears	7
Transmission Type	Wet Dual-Clutch Transmission (DCT)

Chassis steering

Drive Type	Front-engine, Front-wheel drive (FF)
Front Suspension Type	MacPherson independent suspension
Rear Suspension Type	Multi-link independent suspension

Chassis steering (continued)

Power Steering Type	Electric power assistance
Vehicle structure	bearing type

Seat Configuration

Seat Material	○ Imitation leather, • Leather/fabric mix-and-match
Main seat adjustment	• Front-to-back adjustment; • Backrest adjustment; • Height adjustment (2-way); • Leg rest adjustment
Co-seat adjustment method	• Front-to-back adjustment; • Backrest adjustment; • Height adjustment (2-way); • Leg rest adjustment
Electric adjustment of driver's seat and passenger seat	-
Front seat functions	○ Heating
Front passenger seat rear adjustable buttons	-
Rear seat folding	• Proportional down
Front/rear center armrest	Front •/Rear-
Rear cup holder	-
Sports style seats	•

Active safety

Anti-lock Braking System (ABS)	•
Electronic Brakeforce Distribution (EBD/CBC)	•
Brake Assist System (EBA/BAS/BA)	•
Traction Control System (ASR/TCS/TRC)	•
Electronic Stability Control (ESC/ESP/DSC)	•
Tire Pressure Monitoring System (TPMS)	• Tire pressure alarm
Seat Belt Reminder	• Front row
ISOFIX Child Seat Anchors	•
Lane Departure Warning System (LDWS)	-

Active safety (continued)

Autonomous Emergency Braking (AEB)	-
Driver Fatigue Detection	-
Emergency Call System (eCall)	•

Air conditioning/refrigerator

Air conditioning temperature control method	• Manual air conditioning
Rear Independent Climate Control	-
Rear seat air vents	-
Temperature zone control	-
Car air purifier	-
In-cabin PM2.5 Filter	-

Passive safety

Driver/passenger airbag	Main •/Deputy •
Front/rear side airbags	Front •/Rear-
Front/rear head airbags (curtain airbags)	Front •/Rear •
Run-flat tires	•

Wheel brake

Front Brake Type	Ventilation disc
Rear Brake Type	Disc
Parking brake type	handbrake
Front Tire Size	195/55 R16
Rear Tire Size	195/55 R16
Spare Tire Size	None

Audio/Interior Lighting

Speaker Brand Name	○ Harman/Kardon Harman Kardon
Number of speakers	○ ≥12 speakers; • 6-7 speakers
Interior ambient lighting	• Multicolor

Driving functions

Navigation traffic information display	○
Lane assist	-

Driving functions (continued)

Lane Keeping Assist System	-
Cruise control system	• Cruise control
Satellite navigation system	○
Parking Assist	○

Exterior lighting

Low beam light source	•LED
High beam light source	•LED
LED daytime running lights	•
Adaptive high and low beam	○
Automatic headlights	•
Front fog lights	• Halogen
Height-adjustable headlights	•
Headlight Delay Off	•
Turn headlights	○

Exterior mirrors

Exterior mirror function	•Electric adjustment; •Electric folding; •Rearview mirror heating; •Automatically turn down when reversing; •Automatically fold when locking the car
---------------------------------	--

Appearance/anti-theft

Rim material	• Aluminum alloy
Electric trunk	-
Electronic engine immobilizer	•
Central locking system in the car	•
Key Type	• Remote key
Keyless start system	•
Keyless entry function	○ Front row

Skylight/Glass

Sunroof Type	• Sectional electric sunroof
Front/rear electric windows	Front •/Rear •

Skylight/Glass (continued)

One-touch window lifting function	<ul style="list-style-type: none">• Full car
Window anti-pinch function	<ul style="list-style-type: none">•
Car makeup mirror	<ul style="list-style-type: none">• Main driver's lamp; • co-pilot's lamp
Rear wiper	<ul style="list-style-type: none">•
Rain sensor wiper function	<ul style="list-style-type: none">• Rainfall-sensing
Heated water nozzle	<ul style="list-style-type: none">•

Interior and exterior color

Exterior Color	Chili Red:#C20016; Jasper Grey:#78787D; Electronic Blue:#0F9CCE; Pepper White:#ECE0C1; Sun Orange:#CD5000; British Green:#003C1A
Interior Color	Carbon black: #000000

Steering wheel/interior mirror

Steering Wheel Material	<ul style="list-style-type: none">• Leather
Steering wheel position adjustment	<ul style="list-style-type: none">• Manual up and down front and rear adjustment
Multi-function steering wheel	<ul style="list-style-type: none">•
Heated Steering Wheel	-
Steering wheel memory	-
Trip computer display screen	<ul style="list-style-type: none">• Color
Full LCD instrument panel	-
Interior rearview mirror function	<ul style="list-style-type: none">• Automatic anti-glare
HUD Head Up Digital Display	<input type="radio"/>

Intelligent configuration

Connected Car Services	<input type="radio"/>
OTA Updates	-

Driving Control

Driving mode switch	<ul style="list-style-type: none">• Movement; • Economy
Automatic parking	-
Hill start assist	<ul style="list-style-type: none">•

Driving Control (continued)

Engine start-stop technology	•
-------------------------------------	---

Driving Hardware

Front/rear parking radar	Front ○/Rear •
Driving Assistance Camera System	○ Reversing image

In-car charging

Multimedia/charging port	•USB
Number of USB/Type-C ports	• 1 in the front row
Mobile phone wireless charging function	○ Front row

Optional Package

Optional Package	Comfort package (USD 735; Including: intelligent keyless entry system, heating of driver and front passenger seats); Parking package (USD 882; Including: rear view camera, front and rear parking distance alarm, automatic parking assistance); Night travel package (USD 1,324; Including: LED follow-up control headlights (including high beam automatic control), driving assistance system); Technology package (USD 1,765; Including: MINI high-fidelity speaker system Harman/Kardon, MINI head-up display system); Advanced interconnected travel configuration (USD 2,426; Including: emergency rescue assistance, remote after-sales service, MINI connected travel service, real-time road conditions, remote intelligent control, Apple CarPlay, MINI Visual Boost 8.8-inch touch screen (including Bluetooth phone and USB interface), MINI Connected, MINI Connected XL, wireless charging mobile phone base, MINI navigation system, journey consultation service)
-------------------------	---

"●" = Standard equipment

"□" = Not available

"○" = Optional equipment.

Note: These are Chinese market vehicles. Warranty coverage is not available outside of China.