

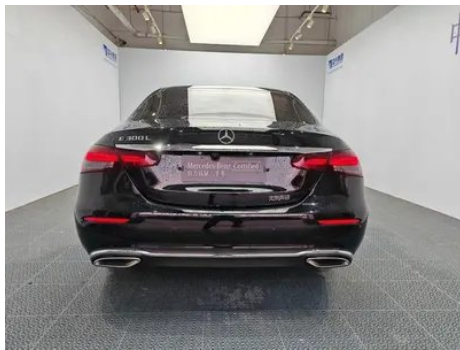
# Vehicle Detail Report

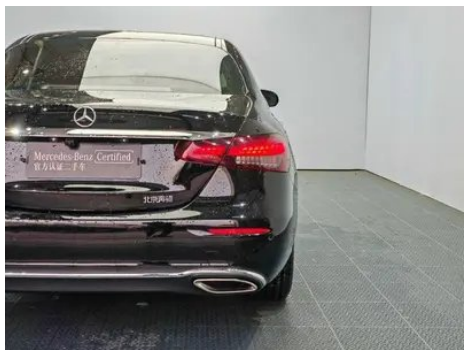
Mercedes-Benz E-Class 2023 E 300 L  
Fashionable Passenger car

## Basic Information

Brand	Mercedes-Benz
Mileage	40,900 km
Color	Black
First Registration	2023-06-01
Transfer Count	0

## Vehicle Images







## Vehicle Condition

1. Driver's seat rails and frame, Signs of removal. 2. Front passenger seat rails and frame, Signs of removal. 3. Headliner, Soiling. 4. Hood, Paint chip, Scratch. 5. Front bumper, Replaced, Scratch damage. 6. Rear bumper, Scratch damage. 7. Left front door, Signs of removal, Paint repair. 8. Right front door, Paint chip. 9. Left rear door, Paint repair, Signs of removal. 10. Right rear door, Paint chip. 11. Trunk lid, Paint chip. 12. Left front fender, Signs of removal, Paint repair. 13. Right front fender, Scratch. 14. Right rear quarter panel, Paint chip, Scratch, Deformation. 15. Windshield, Stone chip. 16. Right tail light, Scratch. 17. Headliner, Soiling.

## Configuration Information

### Model Information

<b>Model Name</b>	Mercedes-Benz E-Class 2023 E 300 L Fashionable
<b>Launch Date</b>	2022.09

### Basic parameters

<b>Vehicle Class</b>	Mid-size and large cars
<b>Energy Type</b>	Gasoline
<b>Maximum Power (kW)</b>	190
<b>Maximum Torque (N·m)</b>	370
<b>Transmission</b>	9-gear manual integration
<b>Body Type</b>	Sedan
<b>Engine</b>	2.0T 258 horsepower L4
<b>Dimensions (L×W×H) (mm)</b>	5078*1860*1480
<b>Official 0-100 km/h Acceleration (s)</b>	6.9
<b>Top Speed (km/h)</b>	240
<b>Curb Weight (kg)</b>	1800
<b>Maximum Gross Weight (kg)</b>	2350
<b>WLTP Combined Fuel Consumption (L/100km)</b>	7.55

### engine

<b>Engine Model</b>	264 920
<b>Displacement (mL)</b>	1991

## engine (continued)

<b>Displacement (L)</b>	2.0
<b>Induction Type</b>	Turbocharging
<b>Cylinder Arrangement</b>	L
<b>Number of Cylinders</b>	4
<b>Valves per Cylinder</b>	4
<b>Valve Train</b>	DOHC
<b>Maximum Power (PS)</b>	258
<b>Max Power Speed (rpm)</b>	6100
<b>Max Torque Speed (rpm)</b>	1800-4000
<b>Maximum net power (kW)</b>	190
<b>Fuel Grade</b>	95.
<b>Fuel Delivery System</b>	Direct injection
<b>Cylinder Head Material</b>	Aluminum alloy
<b>Cylinder Block Material</b>	Aluminum alloy
<b>Engine layout</b>	Longitudinal

## Screen/System

<b>Central control color screen</b>	<ul style="list-style-type: none"><li>• Touch LCD screen</li></ul>
<b>Infotainment Screen Size</b>	<ul style="list-style-type: none"><li>• 12.3 inches</li></ul>
<b>Bluetooth/In-car Phone</b>	<ul style="list-style-type: none"><li>•</li></ul>
<b>Smartphone Integration/Mirroring</b>	<ul style="list-style-type: none"><li>• Support CarPlay;</li><li>• Support CarLife</li></ul>
<b>Voice recognition control system</b>	<ul style="list-style-type: none"><li>• Multimedia system;</li><li>• Navigation;</li><li>• Telephone;</li><li>• Air conditioning</li></ul>
<b>In-vehicle intelligent system</b>	<ul style="list-style-type: none"><li>• MBUX</li></ul>
<b>Gesture Control</b>	○(USD 676)

## Body

<b>Length (mm)</b>	5078
<b>Width (mm)</b>	1860
<b>Height (mm)</b>	1480
<b>Wheelbase (mm)</b>	3079
<b>Front Track (mm)</b>	1596
<b>Rear Track (mm)</b>	1600
<b>Door Opening Type</b>	swing door

## Body (continued)

<b>Number of Doors</b>	4
<b>Number of Seats</b>	5
<b>Fuel Tank Capacity (L)</b>	66
<b>Trunk volume (L)</b>	-
<b>Drag Coefficient (Cd)</b>	-
<b>Approach Angle (°)</b>	18
<b>Departure Angle (°)</b>	17

## Gearbox

<b>Abbreviation</b>	9-gear manual integration
<b>Number of Gears</b>	9
<b>Transmission Type</b>	Automatic Transmission with Manual Mode (AT)

## Chassis steering

<b>Drive Type</b>	Front-engine, Rear-wheel drive (FR)
<b>Front Suspension Type</b>	Multi-link independent suspension
<b>Rear Suspension Type</b>	Multi-link independent suspension
<b>Power Steering Type</b>	Electric power assistance
<b>Vehicle structure</b>	bearing type

## Seat Configuration

<b>Seat Material</b>	○ Genuine leather; • Imitation leather
<b>Main seat adjustment</b>	• Front and rear adjustment; • Backrest adjustment; • Height adjustment (4-way); • Leg rest adjustment; • Lumbar support (4-way)
<b>Co-seat adjustment method</b>	• Front and rear adjustment; • Backrest adjustment; • Height adjustment (4-way); • Leg rest adjustment; • Lumbar support (4-way)
<b>Electric adjustment of driver's seat and passenger seat</b>	Main •/Deputy •
<b>Front seat functions</b>	• Heating; ○ Ventilation
<b>Electric seat memory function</b>	• driving position; • co-pilot position
<b>Front passenger seat rear adjustable buttons</b>	•
<b>Front/rear center armrest</b>	Front •/Rear •

## Seat Configuration (continued)

<b>Rear cup holder</b>	•
<b>Second row seat functions</b>	○ Heating

## Active safety

<b>Anti-lock Braking System (ABS)</b>	•
<b>Electronic Brakeforce Distribution (EBD/CBC)</b>	•
<b>Brake Assist System (EBA/BAS/BA)</b>	•
<b>Traction Control System (ASR/TCS/TRC)</b>	•
<b>Electronic Stability Control (ESC/ESP/DSC)</b>	•
<b>Tire Pressure Monitoring System (TPMS)</b>	• Tire pressure display
<b>Seat Belt Reminder</b>	• Full car
<b>ISOFIX Child Seat Anchors</b>	•
<b>Lane Departure Warning System (LDWS)</b>	○
<b>Autonomous Emergency Braking (AEB)</b>	•
<b>Driver Fatigue Detection</b>	•
<b>Forward Collision Warning (FCW)</b>	•
<b>Emergency Call System (eCall)</b>	•
<b>Built-in Dashcam</b>	○

## Air conditioning/refrigerator

<b>Air conditioning temperature control method</b>	• Automatic air conditioning
<b>Rear Independent Climate Control</b>	-
<b>Rear seat air vents</b>	•
<b>Temperature zone control</b>	•
<b>Car air purifier</b>	•
<b>In-cabin PM2.5 Filter</b>	•
<b>Negative ion generator</b>	○
<b>Car fragrance device</b>	○

## Passive safety

<b>Driver/passenger airbag</b>	Main •/Deputy •
<b>Front/rear side airbags</b>	Front •/Rear-
<b>Front/rear head airbags (curtain airbags)</b>	Front •/Rear •
<b>Run-flat tires</b>	○
<b>Passive pedestrian protection</b>	•

## Wheel brake

<b>Front Brake Type</b>	Ventilation disc
<b>Rear Brake Type</b>	Ventilation disc
<b>Parking brake type</b>	Electronic Parking
<b>Front Tire Size</b>	245/45 R18
<b>Rear Tire Size</b>	245/45 R18
<b>Spare Tire Size</b>	None

## Audio/Interior Lighting

<b>Speaker Brand Name</b>	○ Voice of Burmester Berlin (USD 1,147)
<b>Number of speakers</b>	• 8 horns; ○ 13 horns
<b>Interior ambient lighting</b>	• 64 colors

## Driving functions

<b>Navigation traffic information display</b>	•
<b>Lane assist</b>	○
<b>Lane Keeping Assist System</b>	○
<b>Cruise control system</b>	• Cruise control; ○ Full speed adaptive cruise
<b>Satellite navigation system</b>	•
<b>Driving assistance level</b>	○L2
<b>Lane centering</b>	○
<b>Road traffic sign recognition</b>	○
<b>Map Brand</b>	• Gaud
<b>AR real-time navigation</b>	○
<b>Parking Assist</b>	•

## Exterior lighting

## Exterior lighting (continued)

<b>Low beam light source</b>	•LED
<b>High beam light source</b>	•LED
<b>LED daytime running lights</b>	•
<b>Adaptive high and low beam</b>	○
<b>Automatic headlights</b>	•
<b>Height-adjustable headlights</b>	•
<b>Headlight Delay Off</b>	•
<b>Lighting features</b>	○ Geometric multi-beam (USD 1,985)
<b>Turn headlights</b>	○

## Exterior mirrors

<b>Exterior mirror function</b>	• Electric adjustment; • Electric folding; • Rearview mirror memory; • Rearview mirror heating; • Automatic downturning when reversing; • Automatic folding when locked; • Automatic anti-glare
---------------------------------	---

## Appearance/anti-theft

<b>Rim material</b>	• Aluminum alloy
<b>Electric trunk</b>	•
<b>Electronic engine immobilizer</b>	•
<b>Central locking system in the car</b>	•
<b>Key Type</b>	• Remote key
<b>Keyless start system</b>	•
<b>Keyless entry function</b>	• Full car
<b>Hands-free Trunk</b>	•
<b>Remote start function</b>	•

## Skylight/Glass

<b>Sunroof Type</b>	• Sectional electric sunroof
<b>Front/rear electric windows</b>	Front •/Rear •
<b>One-touch window lifting function</b>	• Full car
<b>Window anti-pinch function</b>	•

## Skylight/Glass (continued)

<b>Car makeup mirror</b>	<ul style="list-style-type: none"><li>• Driver's side ambient light;</li><li>• Passenger-side ambient light;</li><li>• Rear-row ambient light</li></ul>
<b>Rear wiper</b>	-
<b>Rain sensor wiper function</b>	<ul style="list-style-type: none"><li>• Rainfall-sensing</li></ul>

## Interior and exterior color

<b>Exterior Color</b>	Obsidian black:#000000; sapphire blue:#0D2C95; Arctic white:#F4F4F4; ruby black:#1B100F; graphite gray:#4E5158; space-time silver:#ACAE; turquoise green:#193A48
<b>Interior Color</b>	Chestnut Brown/Coffee Brown:#3C2426/#221F1F; Black:#000000; Saddle Brown/Macchiato Beige:#844B41/#D0D0D0

## Steering wheel/interior mirror

<b>Steering Wheel Material</b>	<ul style="list-style-type: none"><li>• Leather</li></ul>
<b>Steering wheel position adjustment</b>	<ul style="list-style-type: none"><li>• Electric up and down front and rear adjustment</li></ul>
<b>Multi-function steering wheel</b>	<ul style="list-style-type: none"><li>•</li></ul>
<b>Heated Steering Wheel</b>	○(USD 515)
<b>Steering wheel memory</b>	<ul style="list-style-type: none"><li>•</li></ul>
<b>Trip computer display screen</b>	<ul style="list-style-type: none"><li>• Color</li></ul>
<b>Full LCD instrument panel</b>	<ul style="list-style-type: none"><li>•</li></ul>
<b>LCD instrument size</b>	<ul style="list-style-type: none"><li>• 12.3 inches</li></ul>
<b>Interior rearview mirror function</b>	<ul style="list-style-type: none"><li>• Automatic anti-glare</li></ul>
<b>Gear shifting</b>	<ul style="list-style-type: none"><li>• Electronic gear shift</li></ul>
<b>HUD Head Up Digital Display</b>	○(USD 1,324)
<b>ETC Device</b>	○(USD 441)
<b>Steering Wheel Shift Paddles</b>	<ul style="list-style-type: none"><li>•</li></ul>

## Intelligent configuration

<b>Connected Car Services</b>	<ul style="list-style-type: none"><li>•</li></ul>
<b>OTA Updates</b>	<ul style="list-style-type: none"><li>•</li></ul>

## Intelligent configuration (continued)

<b>4G/5G Network</b>	•4G
<b>Mobile APP remote function</b>	• Door control; • Vehicle start-up; • Vehicle condition inquiry/diagnosis; • Vehicle location/vehicle search

## Driving Control

<b>Driving mode switch</b>	• Sport; • Economy; • Standard/Comfort; • Customization/Personalization
<b>Automatic parking</b>	•
<b>Hill start assist</b>	•
<b>Variable suspension function</b>	• Soft and hard adjustment of suspension
<b>Variable steering ratio</b>	•
<b>Engine start-stop technology</b>	•

## Driving Hardware

<b>Front/rear parking radar</b>	Front •/Rear •
<b>Driving Assistance Camera System</b>	• 360-degree panoramic image

## In-car charging

<b>Multimedia/charging port</b>	•Type-C
<b>Number of USB/Type-C ports</b>	• 3 in the front/3 in the back
<b>Mobile phone wireless charging function</b>	• Front row

## Optional Package

<b>Optional Package</b>	Zhixiang Package 2(USD 441; Including: heated rear seats); Zhile Package 2(USD 676; Including: MBUX Intelligent Human-Computer Interaction System Real Scene Crossing Navigation and Driving Recorder ); Zhixiang package 3(USD 1,397; Including: refreshing function, in-car air conditioning components); Zhixiang package 1(USD 2,324; Including: front air-conditioned seats, leather interior); Smart driving package 1(USD 3,529; Including: driving assistance component enhanced version, traffic sign assistance system)
-------------------------	---

---

"●" = Standard equipment

"□" = Not available

"○" = Optional equipment.

Note: These are Chinese market vehicles. Warranty coverage is not available outside of China.