

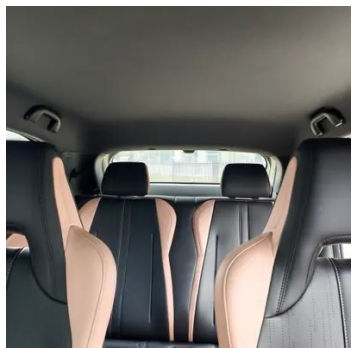
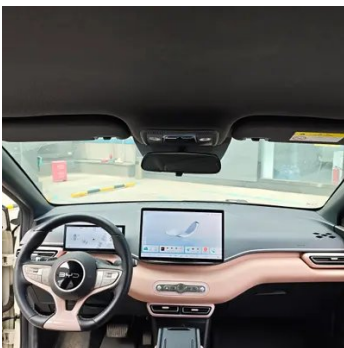
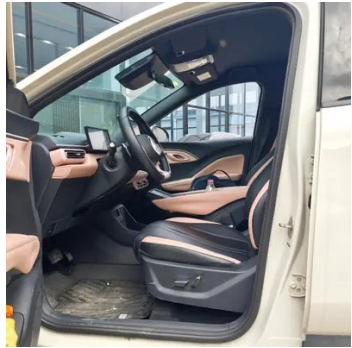
# Vehicle Detail Report

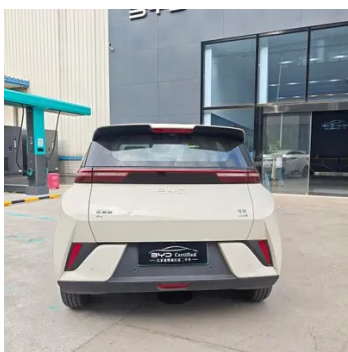
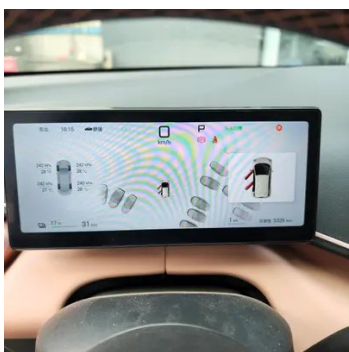
## BYD Seagull 2025 Smart Driving Version 305KM Free version

### Basic Information

Brand	BYD
Mileage	5,000 km
Color	White
First Registration	2025-04-01
Transfer Count	0

### Vehicle Images





## Vehicle Condition

1. Original metal body panels with factory paint.

## Configuration Information

### Model Information

<b>Model Name</b>	BYD Seagull 2025 Smart Driving Version 305km Free version
<b>Launch Date</b>	2025.02

### Basic parameters

<b>Vehicle Class</b>	Small car
<b>Energy Type</b>	Battery Electric Vehicle (BEV)
<b>Maximum Power (kW)</b>	55
<b>Maximum Torque (N·m)</b>	135

## Basic parameters (continued)

<b>Body Type</b>	Hatchback
<b>Dimensions (L×W×H) (mm)</b>	3780*1715*1540
<b>Official 0-100 km/h Acceleration (s)</b>	-
<b>Top Speed (km/h)</b>	130
<b>Curb Weight (kg)</b>	1160
<b>Maximum Gross Weight (kg)</b>	1460
<b>Fast Charging Time (h)</b>	0.5
<b>Electric Motor (PS)</b>	75
<b>Fast Charging Range (%)</b>	30-80
<b>Official 0-50 km/h Acceleration (s)</b>	4.9
<b>Electricity Consumption in Fuel Equivalent (L/100km)</b>	1.15
<b>CLTC Electric Range (km)</b>	305

## Electric Motor

<b>Motor Type</b>	Permanent magnet/synchronous
<b>Total Electric Motor Power (kW)</b>	55
<b>Total Electric Motor Torque (N·m)</b>	135
<b>Front Electric Motor Max Power (kW)</b>	55
<b>Front Electric Motor Max Torque (N·m)</b>	135
<b>Number of drive motors</b>	Single motor
<b>Motor Layout</b>	Front-end
<b>Battery Type</b>	Lithium iron phosphate battery
<b>Battery Capacity (kWh)</b>	30.08
<b>Total Electric Motor Power (PS)</b>	75
<b>Battery Cell Brand</b>	Fodi
<b>Battery Cooling System</b>	Air-cooled
<b>Power consumption per 100 kilometers (kWh/100km)</b>	9.9

## Electric Motor (continued)

<b>Fast charging function</b>	Support
<b>Slow charging port location</b>	Right front side of car
<b>Warranty policy for first-time owners of Sandian</b>	Lifetime Warranty/Non-operational (Liability Exemption Terms Subject to Official)
<b>Fast charging port location</b>	Right front side of car
<b>External AC discharge power (kW)</b>	3.3
<b>Previous Motor Brand</b>	BYD
<b>Front motor model</b>	TZ180XSH
<b>Fast Charging Power (kW)</b>	30
<b>Battery unique technology</b>	Blade Battery

## Screen/System

<b>Central control color screen</b>	<ul style="list-style-type: none"><li>• Touch LCD screen</li></ul>
<b>Infotainment Screen Size</b>	<ul style="list-style-type: none"><li>• 12.8 inches</li></ul>
<b>Bluetooth/In-car Phone</b>	<ul style="list-style-type: none"><li>•</li></ul>
<b>Voice recognition control system</b>	<ul style="list-style-type: none"><li>• Multimedia system;</li><li>• Navigation;</li><li>• Telephone;</li><li>• Air conditioning</li></ul>
<b>Voice wake-up recognition by region</b>	<ul style="list-style-type: none"><li>• Single area</li></ul>
<b>In-vehicle intelligent system</b>	<ul style="list-style-type: none"><li>• DiLink</li></ul>
<b>App Store</b>	<ul style="list-style-type: none"><li>•</li></ul>
<b>Voice assistant wake-up word</b>	<ul style="list-style-type: none"><li>• Hello, Xiao Di</li></ul>
<b>Voice wake-up word-free</b>	<ul style="list-style-type: none"><li>•</li></ul>

## Body

<b>Length (mm)</b>	3780
<b>Width (mm)</b>	1715
<b>Height (mm)</b>	1540
<b>Wheelbase (mm)</b>	2500
<b>Front Track (mm)</b>	1500
<b>Rear Track (mm)</b>	1500
<b>Door Opening Type</b>	swing door

## Body (continued)

<b>Number of Doors</b>	5
<b>Number of Seats</b>	4
<b>Trunk volume (L)</b>	930
<b>Drag Coefficient (Cd)</b>	-
<b>Approach Angle (°)</b>	17
<b>Departure Angle (°)</b>	27
<b>Minimum Turning Radius (m)</b>	4.95

## Gearbox

<b>Abbreviation</b>	Electric vehicle single speed gearbox
<b>Number of Gears</b>	1
<b>Transmission Type</b>	Fixed Gear Ratio Transmission

## Chassis steering

<b>Drive Type</b>	Front-engine, Front-wheel drive (FF)
<b>Front Suspension Type</b>	MacPherson independent suspension
<b>Rear Suspension Type</b>	Torsion beam non-independent suspension
<b>Power Steering Type</b>	Electric power assistance
<b>Vehicle structure</b>	bearing type

## Seat Configuration

<b>Seat Material</b>	<ul style="list-style-type: none"><li>• Imitation leather</li></ul>
<b>Main seat adjustment</b>	<ul style="list-style-type: none"><li>• Front and rear adjustment;</li><li>• Backrest adjustment;</li><li>• Height adjustment (2-way)</li></ul>
<b>Co-seat adjustment method</b>	<ul style="list-style-type: none"><li>• Front and rear adjustment;</li><li>• Backrest adjustment</li></ul>
<b>Electric adjustment of driver's seat and passenger seat</b>	Main/Deputy-
<b>Front seat functions</b>	<ul style="list-style-type: none"><li>• Heating</li></ul>
<b>Front passenger seat rear adjustable buttons</b>	-
<b>Rear seat folding</b>	<ul style="list-style-type: none"><li>• Overall down</li></ul>
<b>Front/rear center armrest</b>	Front •/Rear-
<b>Rear cup holder</b>	-
<b>Sports style seats</b>	<ul style="list-style-type: none"><li>•</li></ul>

## Active safety

<b>Anti-lock Braking System (ABS)</b>	•
<b>Electronic Brakeforce Distribution (EBD/CBC)</b>	•
<b>Brake Assist System (EBA/BAS/BA)</b>	•
<b>Traction Control System (ASR/TCS/TRC)</b>	•
<b>Electronic Stability Control (ESC/ESP/DSC)</b>	•
<b>Tire Pressure Monitoring System (TPMS)</b>	• Tire pressure display
<b>Seat Belt Reminder</b>	• Front row
<b>ISOFIX Child Seat Anchors</b>	•
<b>Lane Departure Warning System (LDWS)</b>	•
<b>Autonomous Emergency Braking (AEB)</b>	•
<b>Driver Fatigue Detection</b>	-
<b>Forward Collision Warning (FCW)</b>	•
<b>Rear Collision Warning</b>	•
<b>Low Speed Alert</b>	•
<b>Built-in Dashcam</b>	•
<b>Door Opening Warning (DOW)</b>	•
<b>Sentry Mode</b>	•

## Air conditioning/refrigerator

<b>Air conditioning temperature control method</b>	• Manual air conditioning
<b>Rear Independent Climate Control</b>	-
<b>Rear seat air vents</b>	-
<b>Temperature zone control</b>	-
<b>Car air purifier</b>	-
<b>In-cabin PM2.5 Filter</b>	-

## Passive safety

<b>Driver/passenger airbag</b>	Main •/Deputy •
--------------------------------	-----------------

## Passive safety (continued)

<b>Front/rear side airbags</b>	-
<b>Front/rear head airbags (curtain airbags)</b>	Front •/Rear •

## Wheel brake

<b>Front Brake Type</b>	Ventilation disc
<b>Rear Brake Type</b>	Disc
<b>Parking brake type</b>	Electronic Parking
<b>Front Tire Size</b>	175/55 R16
<b>Rear Tire Size</b>	175/55 R16
<b>Spare Tire Size</b>	None

## Audio/Interior Lighting

<b>Number of speakers</b>	• 4 speakers
---------------------------	--------------

## Driving functions

<b>Navigation traffic information display</b>	•
<b>Lane assist</b>	•
<b>Lane Keeping Assist System</b>	•
<b>Cruise control system</b>	• Full speed adaptive cruise
<b>Satellite navigation system</b>	•
<b>Driving assistance level</b>	•L2
<b>Rear Cross Traffic Alert</b>	•
<b>Lane centering</b>	•
<b>Road traffic sign recognition</b>	•
<b>Map Brand</b>	• Baidu
<b>Remote Parking</b>	•
<b>Driver assistance systems</b>	•DiPilot 100
<b>Hands-off detection</b>	•
<b>Parking Assist</b>	•
<b>Lane Change Assist</b>	•
<b>Automatic Ramp Entry/Exit Assist</b>	•
<b>Highway sections</b>	• Expressway section

## Exterior lighting

## Exterior lighting (continued)

<b>Low beam light source</b>	•LED
<b>High beam light source</b>	•LED
<b>LED daytime running lights</b>	•
<b>Adaptive high and low beam</b>	•
<b>Automatic headlights</b>	•
<b>Height-adjustable headlights</b>	•
<b>Headlight Delay Off</b>	•

## Exterior mirrors

<b>Exterior mirror function</b>	• Electric adjustment; • Electric folding; • Rearview mirror heating; • Automatic folding when locked
---------------------------------	---

## Appearance/anti-theft

<b>Rim material</b>	• Aluminum alloy
<b>Central locking system in the car</b>	•
<b>Key Type</b>	• Remote key; • Bluetooth key; • NFC/RFID key
<b>Keyless start system</b>	•
<b>Keyless entry function</b>	• Driving position
<b>Remote start function</b>	•
<b>Battery preheating</b>	•
<b>Discharge to the outside</b>	•

## Skylight/Glass

<b>Front/rear electric windows</b>	Front •/Rear •
<b>One-touch window lifting function</b>	• Full vehicle
<b>Window anti-pinch function</b>	•
<b>Car makeup mirror</b>	• Main driver's lamp; • co-pilot's lamp
<b>Rear wiper</b>	-

## Interior and exterior color

## Interior and exterior color (continued)

<b>Exterior Color</b>	Warm Sunshine White #F0F0F0 budding green #C4D16A seagull white Peach pink #FFFFFF #D4B4B4 Arctic Blue #879DB2 Extreme Night Black #000000 Peach pink #D4B4B4 Obsidian Black Glacier blue #000000 #9EB9D9
<b>Interior Color</b>	Deep Sea Blue #3C78C8 Oat grains #C4C2B7

## Steering wheel/interior mirror

<b>Steering Wheel Material</b>	• Cortex
<b>Steering wheel position adjustment</b>	• Manual up and down adjustment
<b>Multi-function steering wheel</b>	•
<b>Heated Steering Wheel</b>	-
<b>Steering wheel memory</b>	-
<b>Trip computer display screen</b>	• Color
<b>Full LCD instrument panel</b>	•
<b>LCD instrument size</b>	• 8.8 inches
<b>Interior rearview mirror function</b>	• Manual anti-glare
<b>Gear shifting</b>	• Electronic gear shift
<b>ETC Device</b>	•

## Intelligent configuration

<b>Connected Car Services</b>	•
<b>OTA Updates</b>	•
<b>4G/5G Network</b>	•5G
<b>Mobile APP remote function</b>	Vehicle start Charging management Vehicle Condition Query Diagnosis Car Owner Services (Find charging pile Gas station Parking, etc.) Appointment maintenance Maintenance
<b>Wi-Fi hotspots</b>	•

## Driving Control

<b>Driving mode switch</b>	• Sport; • Economy; • Standard/ Comfort; • Snow
<b>Automatic parking</b>	•

## Driving Control (continued)

<b>Hill start assist</b>	•
<b>Energy recovery system</b>	•

## Driving Hardware

<b>Front/rear parking radar</b>	Front •/Rear •
<b>Driving Assistance Camera System</b>	• 360-degree panoramic image
<b>Front perception camera</b>	• Three eyes
<b>Number of cameras</b>	• 12
<b>Number of ultrasonic radars</b>	• 12
<b>Millimeter wave radar quantity</b>	• 5
<b>Assisted driving chip</b>	• Yingweida Orin-N
<b>Total chip computing power</b>	•84 TOPS

## In-car charging

<b>Multimedia/charging port</b>	•USB;•Type-C
<b>Number of USB/Type-C ports</b>	• 2 in the front row
<b>Mobile phone wireless charging function</b>	• Front row
<b>USB/Type-C maximum charging power</b>	•60W

"●" = Standard equipment

"\_" = Not available

"○" = Optional equipment.

Note: These are Chinese market vehicles. Warranty coverage is not available outside of China.