

Vehicle Detail Report

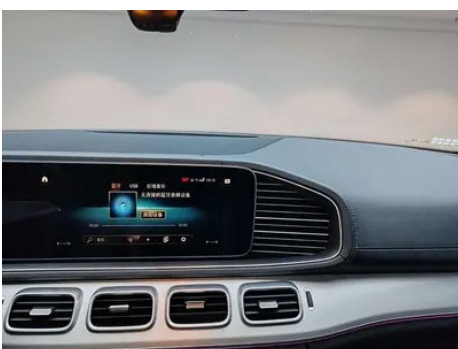
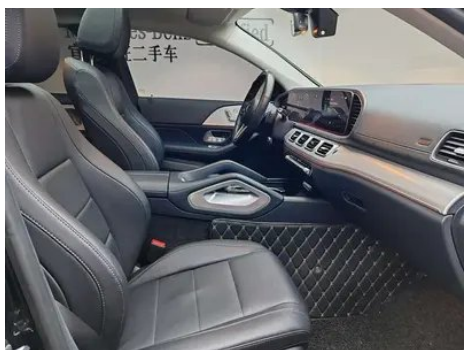
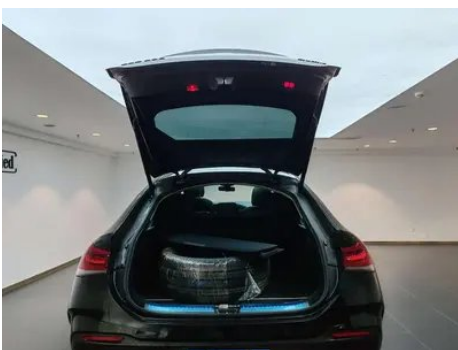
Mercedes-Benz GLE Coupe 2022 GLE 350 4MATIC coupe SUV Fashionable

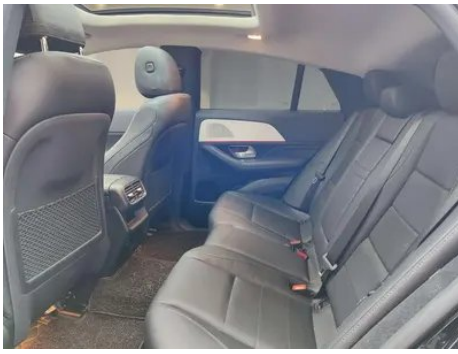
Basic Information

Brand	Mercedes-Benz
Mileage	61,000 km
Color	Black
First Registration	2023-03-01
Transfer Count	1

Vehicle Images







Vehicle Condition

1. Radiator support, Signs of removal, Replaced.

Configuration Information

Model Information

Model Name	Mercedes-Benz GLE Coupe 2022 GLE 350 4MATIC coupe SUV Fashionable
Launch Date	2022.01

Basic parameters

Vehicle Class	Mid-size and large SUVs
Energy Type	Gasoline
Maximum Power (kW)	190
Maximum Torque (N·m)	370
Transmission	9-gear manual integration
Body Type	SUV Crossover
Engine	2.0T 258 horsepower L4
Dimensions (L×W×H) (mm)	4955*2018*1716
Official 0-100 km/h Acceleration (s)	7.4
Top Speed (km/h)	223
Curb Weight (kg)	2176
Maximum Gross Weight (kg)	-
WLTP Combined Fuel Consumption (L/100km)	9.6

engine

Engine Model	264 920
Displacement (mL)	1991
Displacement (L)	2.0
Induction Type	Turbocharging
Cylinder Arrangement	L

engine (continued)

Number of Cylinders	4
Valves per Cylinder	4
Valve Train	DOHC
Maximum Power (PS)	258
Max Power Speed (rpm)	6100
Max Torque Speed (rpm)	1800-4000
Maximum net power (kW)	190
Fuel Grade	95.
Fuel Delivery System	Direct injection
Cylinder Head Material	Aluminum alloy
Cylinder Block Material	Aluminum alloy
Engine layout	Longitudinal

Screen/System

Central control color screen	<ul style="list-style-type: none">• Touch LCD screen
Infotainment Screen Size	<ul style="list-style-type: none">• 12.3 inches
Bluetooth/In-car Phone	<ul style="list-style-type: none">•
Smartphone Integration/Mirroring	<ul style="list-style-type: none">• Apple CarPlay support;• Baidu CarLife support;• Android Auto support
Voice recognition control system	<ul style="list-style-type: none">• Multimedia system;• Navigation;• Telephone;• Air conditioning

Body

Length (mm)	4955
Width (mm)	2018
Height (mm)	1716
Wheelbase (mm)	2935
Front Track (mm)	-
Rear Track (mm)	-
Door Opening Type	swing door
Number of Doors	5
Number of Seats	5
Trunk volume (L)	655-1790
Drag Coefficient (Cd)	-
Approach Angle (°)	24.2

Body (continued)

Departure Angle (°)	24.4
----------------------------	------

Gearbox

Abbreviation	9-gear manual integration
Number of Gears	9
Transmission Type	Automatic Transmission with Manual Mode (AT)

Chassis steering

Drive Type	Front-engine, All-wheel drive (F-AWD)
Four-wheel drive	Full-time four-wheel drive
Central differential structure	Multi-plate clutch
Front Suspension Type	Double wishbone independent suspension
Rear Suspension Type	Multi-link independent suspension
Power Steering Type	Electric power assistance
Vehicle structure	bearing type

Seat Configuration

Seat Material	<input type="radio"/> Genuine leather; <input checked="" type="radio"/> Imitation leather
Main seat adjustment	<input checked="" type="radio"/> Front and rear adjustment; <input checked="" type="radio"/> Backrest adjustment; <input checked="" type="radio"/> Height adjustment (4-way); <input checked="" type="radio"/> Lumbar support (4-way)
Co-seat adjustment method	<input checked="" type="radio"/> Front and rear adjustment; <input checked="" type="radio"/> Backrest adjustment; <input checked="" type="radio"/> Height adjustment (4-way)
Electric adjustment of driver's seat and passenger seat	Main <input checked="" type="radio"/> /Deputy <input checked="" type="radio"/>
Front seat functions	<input checked="" type="radio"/> Heating; <input type="radio"/> Ventilation (USD 1,544)
Electric seat memory function	<input type="radio"/> Driving position
Front passenger seat rear adjustable buttons	-
Rear seat folding	<input checked="" type="radio"/> Proportional down
Front/rear center armrest	Front <input checked="" type="radio"/> /Rear <input checked="" type="radio"/>
Rear cup holder	<input checked="" type="radio"/>

Active safety

Active safety (continued)

Anti-lock Braking System (ABS)	•
Electronic Brakeforce Distribution (EBD/CBC)	•
Brake Assist System (EBA/BAS/BA)	•
Traction Control System (ASR/TCS/TRC)	•
Electronic Stability Control (ESC/ESP/DSC)	•
Tire Pressure Monitoring System (TPMS)	• Tire pressure display
Seat Belt Reminder	• Full vehicle
ISOFIX Child Seat Anchors	•
Lane Departure Warning System (LDWS)	•
Autonomous Emergency Braking (AEB)	•
Driver Fatigue Detection	•
Emergency Call System (eCall)	•

Air conditioning/refrigerator

Air conditioning temperature control method	• Automatic air conditioning
Rear Independent Climate Control	○(USD 1,397)
Rear seat air vents	•
Temperature zone control	•
Car air purifier	•
In-cabin PM2.5 Filter	•

Passive safety

Driver/passenger airbag	Main •/Deputy •
Front/rear side airbags	Front/rear rear side airbag (USD 721)
Front/rear head airbags (curtain airbags)	Front •/Rear •

Wheel brake

Front Brake Type	Ventilation disc
Rear Brake Type	Ventilation disc

Wheel brake (continued)

Parking brake type	Electronic Parking
Front Tire Size	275/50 R20
Rear Tire Size	275/50 R20
Spare Tire Size	None

Audio/Interior Lighting

Speaker Brand Name	○Burmester Voices of Berlin (12000 yuan)
Number of speakers	○13 Speaker (12000 yuan) •10-11 speaker
Interior ambient lighting	• 64 colors

Driving functions

Navigation traffic information display	•
Lane assist	-
Lane Keeping Assist System	•
Cruise control system	• Cruise control
Satellite navigation system	•
Parking Assist	•

Exterior lighting

Low beam light source	•LED
High beam light source	•LED
LED daytime running lights	•
Adaptive high and low beam	•
Automatic headlights	•
Height-adjustable headlights	•
Headlight Delay Off	•

Exterior mirrors

Exterior mirror function	• Electric adjustment; • Electric folding; ○ Rearview mirror memory; • Rearview mirror heating; ○ Automatic downturning when reversing; • Automatic folding when locked; • Automatic anti-glare
---------------------------------	---

Appearance/anti-theft

Rim material	• Aluminum alloy
---------------------	------------------

Appearance/anti-theft (continued)

Electric trunk	<ul style="list-style-type: none">•
Electronic engine immobilizer	<ul style="list-style-type: none">•
Central locking system in the car	<ul style="list-style-type: none">•
Key Type	<ul style="list-style-type: none">• Remote key
Keyless start system	<ul style="list-style-type: none">•
Keyless entry function	<ul style="list-style-type: none">• Full vehicle
Hands-free Trunk	<ul style="list-style-type: none">•
Electric trunk position memory	<ul style="list-style-type: none">•
Remote start function	<ul style="list-style-type: none">•

Skylight/Glass

Sunroof Type	<ul style="list-style-type: none">• Openable panoramic sunroof
Front/rear electric windows	Front •/Rear •
One-touch window lifting function	<ul style="list-style-type: none">• Full vehicle
Window anti-pinch function	<ul style="list-style-type: none">•
Car makeup mirror	<ul style="list-style-type: none">• Main driver's lamp;• co-pilot's lamp
Rear wiper	-
Rain sensor wiper function	<ul style="list-style-type: none">• Rainfall-sensing

Interior and exterior color

Exterior Color	Moonlight Lime #62686C obsidian black #000000 Gem blue #263963 Arctic White #FFFEE9 Zirconium Quartz Red #AF021C Hao Sha Yin #AAB4BE water silica alcalite blue #001655 Grandmother Stone Green #274A3B Diamond White #EFEBEA Spacetime Silver #B1B2B7
Interior Color	Black:#000000

Steering wheel/interior mirror

Steering Wheel Material	<ul style="list-style-type: none">• Leather
Steering wheel position adjustment	<ul style="list-style-type: none">• Manual up and down front and rear adjustment

Steering wheel/interior mirror (continued)

Multi-function steering wheel	•
Heated Steering Wheel	-
Steering wheel memory	-
Trip computer display screen	• Color
Full LCD instrument panel	•
LCD instrument size	• 12.3 inches
Interior rearview mirror function	• Automatic anti-glare
HUD Head Up Digital Display	○(USD 2,279)
Steering Wheel Shift Paddles	•

Intelligent configuration

Connected Car Services	•
OTA Updates	•

Driving Control

Driving mode switch	• Sport; • Standard/Comfort; • Snow
Automatic parking	•
Steep slope descent	•
Hill start assist	•
Variable suspension function	• Suspension damping adjustment; • Suspension height adjustment
Air Suspension	•
Variable steering ratio	•
Engine start-stop technology	•

Driving Hardware

Front/rear parking radar	Front •/Rear •
Driving Assistance Camera System	• Reversing image; ○ 360-degree panoramic image

In-car charging

Multimedia/charging port	•Type-C
Number of USB/Type-C ports	• 3 in the front row/2 in the back row
Luggage compartment 12V power socket	•

Optional Package

Optional Package (continued)

Optional Package	Zhilian Suit 1 (11900 yuan Contains with 360° Smart Parking Camera Electric adjustable driver's seat with memory function)
-------------------------	---

"●" = Standard equipment

"_" = Not available

"○" = Optional equipment.

Note: These are Chinese market vehicles. Warranty coverage is not available outside of China.