

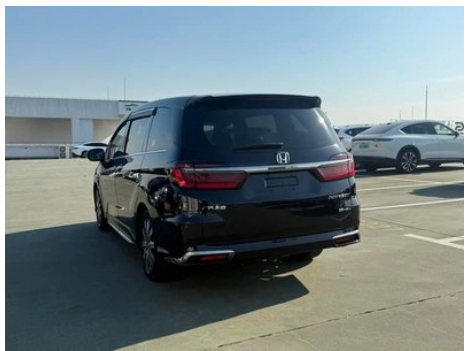
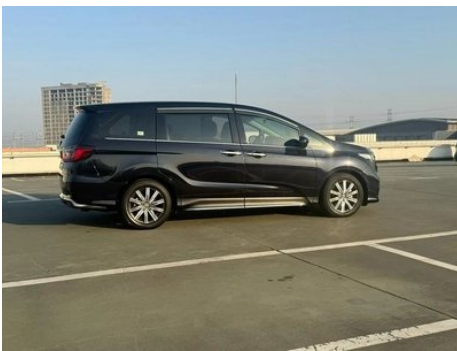
Vehicle Detail Report

Odyssey 2022 2.0L Sharp · Enjoyment Edition

Basic Information

Brand	Honda
Mileage	59,000 km
Color	Black
First Registration	2022-02-01
Transfer Count	1

Vehicle Images





Vehicle Condition

1. Left rocker panel, Scratch damage. 2. Right rocker panel, Inner side deformation.

Configuration Information

Model Information

Model Name	Odyssey 2022 2.0L e:HEV Sharp · Enjoyment Edition
Launch Date	2021.12

Basic parameters

Vehicle Class	Mid-size MPV
Energy Type	Hybrid Electric Vehicle (HEV)
Maximum Power (kW)	107
Maximum Torque (N·m)	175
Transmission	E-CVT continuously variable transmission
Body Type	MPV
Engine	2.0L 146 horsepower L4
Dimensions (L×W×H) (mm)	4861*1820*1712
Official 0-100 km/h Acceleration (s)	-
Top Speed (km/h)	160
Curb Weight (kg)	1889
Maximum Gross Weight (kg)	2514
Electric Motor (PS)	184
WLTP Combined Fuel Consumption (L/100km)	5.88

engine

Engine Model	LFB11
Displacement (mL)	1993
Displacement (L)	2.0

engine (continued)

Induction Type	Natural aspiration
Cylinder Arrangement	L
Number of Cylinders	4
Valves per Cylinder	4
Compression Ratio	13.5
Valve Train	DOHC
Maximum Power (PS)	146
Max Power Speed (rpm)	6200
Max Torque Speed (rpm)	3500
Maximum net power (kW)	107
Fuel Grade	92.
Fuel Delivery System	Multi-point EFI
Cylinder Head Material	Aluminum alloy
Cylinder Block Material	Aluminum alloy
Engine layout	Horizontal
Engine-specific technologies	i-VTEC

Electric Motor

Motor Type	-
Total Electric Motor Power (kW)	135
Total Electric Motor Torque (N·m)	315
Front Electric Motor Max Power (kW)	135
Front Electric Motor Max Torque (N·m)	315
System total power (kW)	158
Number of drive motors	Single motor
Motor Layout	Front-end
Battery Type	Lithium-ion battery

Screen/System

Central control color screen	<ul style="list-style-type: none">• Touch LCD screen
Infotainment Screen Size	<ul style="list-style-type: none">• 10.1 inches
Bluetooth/In-car Phone	<ul style="list-style-type: none">•

Screen/System (continued)

Smartphone Integration/ Mirroring	<ul style="list-style-type: none">• Support CarLife
Voice recognition control system	<ul style="list-style-type: none">• Multimedia system;• Navigation;• Telephone
In-vehicle intelligent system	<ul style="list-style-type: none">•Honda Connect

Body

Length (mm)	4861
Width (mm)	1820
Height (mm)	1712
Wheelbase (mm)	2900
Front Track (mm)	1559
Rear Track (mm)	1560
Door Opening Type	Side sliding door
Number of Doors	5
Number of Seats	7
Fuel Tank Capacity (L)	50
Trunk volume (L)	-
Drag Coefficient (Cd)	-
Approach Angle (°)	15
Departure Angle (°)	17
Minimum Turning Radius (m)	5.4

Gearbox

Abbreviation	E-CVT continuously variable transmission
Number of Gears	stepless speed change
Transmission Type	Electronic Continuously Variable Transmission (E-CVT)

Chassis steering

Drive Type	Front-engine, Front-wheel drive (FF)
Front Suspension Type	MacPherson independent suspension
Rear Suspension Type	Torsion beam non-independent suspension
Power Steering Type	Electric power assistance
Vehicle structure	bearing type

Seat Configuration

Seat Configuration (continued)

Seat Material	• Leather
Main seat adjustment	• Front and rear adjustment; • Backrest adjustment; • Height adjustment (4-way)
Co-seat adjustment method	• Front and rear adjustment; • Backrest adjustment
Electric adjustment of driver's seat and passenger seat	Main/Deputy-
Front seat functions	• Heating
Front passenger seat rear adjustable buttons	-
Second row seat adjustment	• Front and rear adjustment; • Backrest adjustment; • Left and right adjustment
Rear seat folding	• Proportional down
Front/rear center armrest	Front •/Rear •
Rear cup holder	•
Seat Layout	•2-2-3
Second row independent seats	•

Active safety

Anti-lock Braking System (ABS)	•
Electronic Brakeforce Distribution (EBD/CBC)	•
Brake Assist System (EBA/BAS/BA)	•
Traction Control System (ASR/TCS/TRC)	•
Electronic Stability Control (ESC/ESP/DSC)	•
Tire Pressure Monitoring System (TPMS)	• Tire pressure alarm
Seat Belt Reminder	• Front row
ISOFIX Child Seat Anchors	•
Lane Departure Warning System (LDWS)	•
Autonomous Emergency Braking (AEB)	•
Driver Fatigue Detection	-

Active safety (continued)

Forward Collision Warning (FCW)	•
Low Speed Alert	•
Emergency Call System (eCall)	•

Air conditioning/refrigerator

Air conditioning temperature control method	• Automatic air conditioning
Rear Independent Climate Control	•
Rear seat air vents	•
Temperature zone control	•
Car air purifier	-
In-cabin PM2.5 Filter	•

Passive safety

Driver/passenger airbag	Main •/Deputy •
Front/rear side airbags	Front •/Rear-
Front/rear head airbags (curtain airbags)	-

Wheel brake

Front Brake Type	Ventilation disc
Rear Brake Type	Disc
Parking brake type	Electronic Parking
Front Tire Size	215/60 R17
Rear Tire Size	215/60 R17
Spare Tire Size	None

Audio/Interior Lighting

Number of speakers	• 6 speakers
---------------------------	--------------

Driving functions

Navigation traffic information display	•
Lane assist	-
Lane Keeping Assist System	•
Cruise control system	• Full speed adaptive cruise
Satellite navigation system	•

Driving functions (continued)

Driving assistance level	•L2
Lane centering	•
Road traffic sign recognition	•
Driver assistance systems	•Honda SENSING
Parking Assist	-

Exterior lighting

Low beam light source	•LED
High beam light source	•LED
LED daytime running lights	-
Adaptive high and low beam	-
Automatic headlights	-
Front fog lights	•LED
Height-adjustable headlights	•
Headlight Delay Off	•

Exterior mirrors

Exterior mirror function	• Electric adjustment; • Electric folding
---------------------------------	---

Appearance/anti-theft

Rim material	• Aluminum alloy
Electric trunk	•
Electronic engine immobilizer	•
Central locking system in the car	•
Key Type	• Remote key
Keyless start system	•
Keyless entry function	• Front row
Hands-free Trunk	•
Electric trunk position memory	•
Sliding door type	• Dual electric

Skylight/Glass

Sunroof Type	• Electric sunroof
---------------------	--------------------

Skylight/Glass (continued)

Front/rear electric windows	Front •/Rear •
One-touch window lifting function	• Driving position
Window anti-pinch function	•
Car makeup mirror	• Main driver's lamp; • co-pilot's lamp
Rear wiper	•
Side window multi-layer soundproof glass	• Full car

Interior and exterior color

Exterior Color	Star Moon White:#EFEFEF, Greenland White:#EDF2F8, Aurora, Blue:#1E2895; Polar Night Flow Silver:#505050; Streamer Magic Purple:#330852, Star Blue:#1F3058
Interior Color	Black:#000000; Black/Ivory:#000000/#CEC5B1

Steering wheel/interior mirror

Steering Wheel Material	• Leather
Steering wheel position adjustment	• Manual up and down front and rear adjustment
Multi-function steering wheel	•
Heated Steering Wheel	-
Steering wheel memory	-
Trip computer display screen	• Color
Full LCD instrument panel	-
LCD instrument size	• 7 inches
Interior rearview mirror function	• Manual anti-glare
Gear shifting	• Push-button shift
ETC Device	•

Intelligent configuration

Connected Car Services	•
OTA Updates	•
4G/5G Network	•4G

Intelligent configuration (continued)

Mobile APP remote function	• Vehicle condition inquiry/ diagnosis; • Vehicle location/vehicle search
Wi-Fi hotspots	•

Driving Control

Driving mode switch	• Movement; • Economy
Automatic parking	•
Hill start assist	•
Energy recovery system	•

Driving Hardware

Front/rear parking radar	Front •/Rear •
Driving Assistance Camera System	• Reversing image

In-car charging

Multimedia/charging port	•USB
Number of USB/Type-C ports	• 3 in the front row/2 in the back row
Mobile phone wireless charging function	• Front row

"●" = Standard equipment

"_" = Not available

"○" = Optional equipment.

Note: These are Chinese market vehicles. Warranty coverage is not available outside of China.