

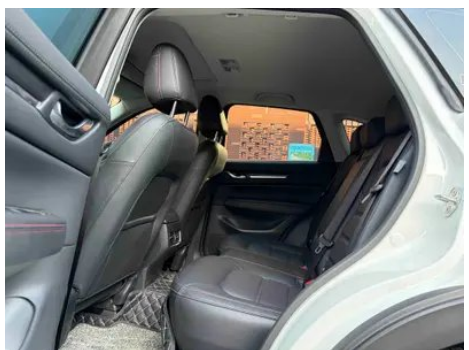
Vehicle Detail Report

Mazda CX-5 2021 2.5L Automatic two-wheel drive black knight type

Basic Information

Brand	Mazda
Mileage	53,200 km
Color	White
First Registration	2021-11-01
Transfer Count	0

Vehicle Images





Vehicle Condition

1. Trunk lid, Body panel repair.

Configuration Information

Model Information

Model Name	Mazda CX-5 2021 2.5L Automatic Two-Drive Black Knight
Launch Date	2021.04

Basic parameters

Vehicle Class	Compact SUV
Energy Type	Gasoline
Maximum Power (kW)	144
Maximum Torque (N·m)	252
Transmission	6-speed manual integration
Body Type	SUV
Engine	2.5L 196 horsepower L4
Dimensions (L×W×H) (mm)	4555*1842*1685
Official 0-100 km/h Acceleration (s)	-
Top Speed (km/h)	-
Curb Weight (kg)	1593
Maximum Gross Weight (kg)	-
NEDC Combined Fuel Consumption (L/100km)	7.4

engine

Engine Model	PY
Displacement (mL)	2488
Displacement (L)	2.5
Induction Type	Natural aspiration
Cylinder Arrangement	L
Number of Cylinders	4
Valves per Cylinder	4
Compression Ratio	13
Valve Train	DOHC
Maximum Power (PS)	196
Max Power Speed (rpm)	6100
Max Torque Speed (rpm)	4000
Maximum net power (kW)	144
Fuel Grade	92.
Fuel Delivery System	Direct injection
Cylinder Head Material	Aluminum alloy
Cylinder Block Material	Aluminum alloy
Engine layout	Horizontal
Engine-specific technologies	Dual S-VT

Screen/System

Central control color screen	<ul style="list-style-type: none">• Touch LCD screen
Infotainment Screen Size	<ul style="list-style-type: none">• 7 inches
Bluetooth/In-car Phone	<ul style="list-style-type: none">•
Smartphone Integration/Mirroring	<ul style="list-style-type: none">• Apple CarPlay support;• Baidu CarLife support
Voice recognition control system	<ul style="list-style-type: none">• Multimedia system;○ Navigation;• Phone

Body

Length (mm)	4555
Width (mm)	1842
Height (mm)	1685
Wheelbase (mm)	2700
Front Track (mm)	-

Body (continued)

Rear Track (mm)	-
Door Opening Type	-
Number of Doors	5
Number of Seats	5
Fuel Tank Capacity (L)	56
Trunk volume (L)	-
Drag Coefficient (Cd)	-

Gearbox

Abbreviation	6-speed manual integration
Number of Gears	6
Transmission Type	Automatic Transmission with Manual Mode (AT)

Chassis steering

Drive Type	Front-engine, Front-wheel drive (FF)
Front Suspension Type	MacPherson independent suspension
Rear Suspension Type	Multi-link independent suspension
Power Steering Type	Electric power assistance
Vehicle structure	bearing type

Seat Configuration

Seat Material	<ul style="list-style-type: none">• Leather
Main seat adjustment	<ul style="list-style-type: none">• Front and rear adjustment;• Backrest adjustment;• Height adjustment (4-way);• Lumbar support (2-way)
Co-seat adjustment method	<ul style="list-style-type: none">• Front and rear adjustment;• Backrest adjustment
Electric adjustment of driver's seat and passenger seat	Main/Deputy-
Front seat functions	<ul style="list-style-type: none">• Heating
Electric seat memory function	<ul style="list-style-type: none">• Driving position
Front passenger seat rear adjustable buttons	-
Second row seat adjustment	<ul style="list-style-type: none">• Backrest adjustment
Rear seat folding	<ul style="list-style-type: none">• Proportional down

Seat Configuration (continued)

Front/rear center armrest	Front •/Rear •
Rear cup holder	•

Active safety

Anti-lock Braking System (ABS)	•
Electronic Brakeforce Distribution (EBD/CBC)	•
Brake Assist System (EBA/BAS/BA)	•
Traction Control System (ASR/TCS/TRC)	•
Electronic Stability Control (ESC/ESP/DSC)	•
Tire Pressure Monitoring System (TPMS)	• Tire pressure alarm
Seat Belt Reminder	• Front row
ISOFIX Child Seat Anchors	•
Lane Departure Warning System (LDWS)	•
Autonomous Emergency Braking (AEB)	•
Driver Fatigue Detection	-

Air conditioning/refrigerator

Air conditioning temperature control method	• Automatic air conditioning
Rear Independent Climate Control	-
Rear seat air vents	•
Temperature zone control	•
Car air purifier	-
In-cabin PM2.5 Filter	-

Passive safety

Driver/passenger airbag	Main •/Deputy •
Front/rear side airbags	Front •/Rear-
Front/rear head airbags (curtain airbags)	Front •/Rear •

Wheel brake

Front Brake Type	Ventilation disc
-------------------------	------------------

Wheel brake (continued)

Rear Brake Type	Disc
Parking brake type	Electronic Parking
Front Tire Size	225/55 R19
Rear Tire Size	225/55 R19
Spare Tire Size	Not full-size

Audio/Interior Lighting

Number of speakers	• 6 speakers
---------------------------	--------------

Driving functions

Navigation traffic information display	○
Lane assist	•
Lane Keeping Assist System	-
Cruise control system	• Adaptive cruise
Satellite navigation system	○
Rear Cross Traffic Alert	•
Parking Assist	-

Exterior lighting

Low beam light source	•LED
High beam light source	•LED
LED daytime running lights	•
Adaptive high and low beam	•
Automatic headlights	•
Front fog lights	•LED
Height-adjustable headlights	•
Headlight Delay Off	•

Exterior mirrors

Exterior mirror function	• Electric adjustment; • Electric folding; • Rearview mirror heating; • Automatic folding when locked
---------------------------------	---

Appearance/anti-theft

Rim material	• Aluminum alloy
Electric trunk	•

Appearance/anti-theft (continued)

Electronic engine immobilizer	<ul style="list-style-type: none">•
Central locking system in the car	<ul style="list-style-type: none">•
Key Type	<ul style="list-style-type: none">• Remote key
Keyless start system	<ul style="list-style-type: none">•
Keyless entry function	<ul style="list-style-type: none">• Front row
Electric trunk position memory	<ul style="list-style-type: none">•
Roof rack	<ul style="list-style-type: none">•

Skylight/Glass

Sunroof Type	<ul style="list-style-type: none">• Electric sunroof
Front/rear electric windows	Front •/Rear •
One-touch window lifting function	<ul style="list-style-type: none">• Full vehicle
Window anti-pinch function	<ul style="list-style-type: none">•
Car makeup mirror	<ul style="list-style-type: none">• Main driver's lamp; • co-pilot's lamp
Rear wiper	<ul style="list-style-type: none">•
Rain sensor wiper function	<ul style="list-style-type: none">• Rainfall-sensing
Side window multi-layer soundproof glass	<ul style="list-style-type: none">• Front row

Interior and exterior color

Exterior Color	stellar blue #4270B4 Pearlescent white #FFFFFF platinum steel ash #55565A Phantom Silver #D3D7D4 Soul Red #C01025 Extreme Night Black #000000 Extreme Gray #58606C
Interior Color	Black:#000000

Steering wheel/interior mirror

Steering Wheel Material	<ul style="list-style-type: none">• Leather
Steering wheel position adjustment	<ul style="list-style-type: none">• Manual up and down front and rear adjustment
Multi-function steering wheel	<ul style="list-style-type: none">•
Heated Steering Wheel	-
Steering wheel memory	-

Steering wheel/interior mirror (continued)

Trip computer display screen	• Color
Full LCD instrument panel	-
LCD instrument size	• 4.6 inches
Interior rearview mirror function	• Automatic anti-glare
Gear shifting	• Mechanical gear shift
HUD Head Up Digital Display	•

Intelligent configuration

Connected Car Services	-
OTA Updates	-

Driving Control

Automatic parking	•
Hill start assist	•
Engine start-stop technology	•

Driving Hardware

Front/rear parking radar	Front •/Rear •
Driving Assistance Camera System	• Reversing image
Front perception camera	• Monocular
Number of cameras	• 2
Number of ultrasonic radars	•8 pieces

In-car charging

Multimedia/charging port	•USB;•AUX;•SD
Number of USB/Type-C ports	• 2 in the front row/2 in the back row

"●" = Standard equipment

"-" = Not available

"○" = Optional equipment.

Note: These are Chinese market vehicles. Warranty coverage is not available outside of China.