

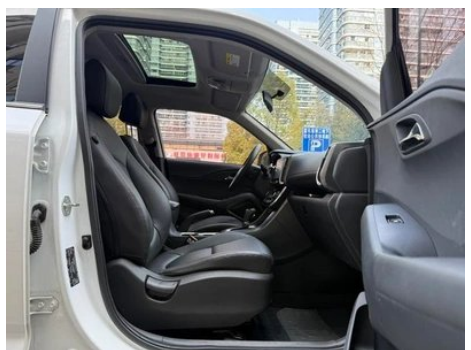
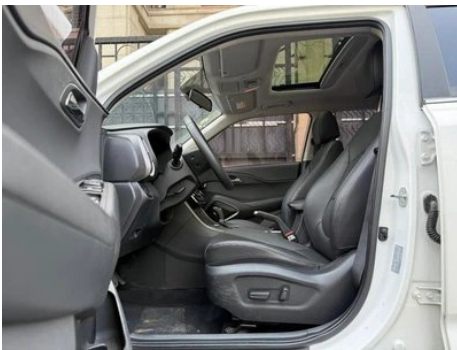
Vehicle Detail Report

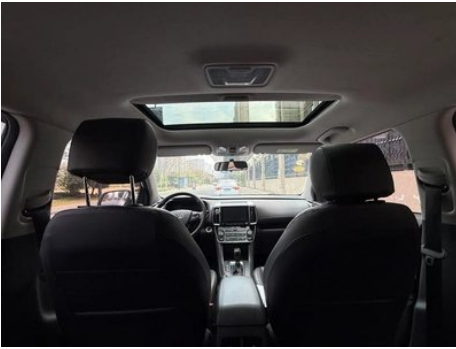
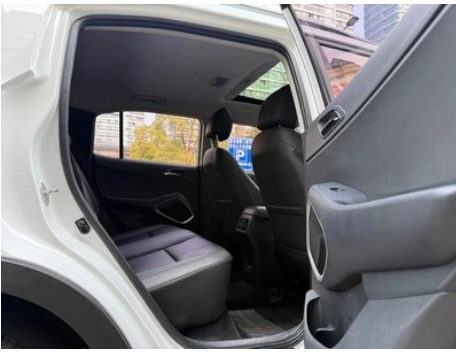
Hyundai ix35 2018 2.0L Automatic two-wheel drive Zhiyong · Enjoy Edition

Basic Information

Brand	Hyundai
Mileage	52,000 km
Color	White
First Registration	2018-01-01
Transfer Count	0

Vehicle Images







Vehicle Condition

1. Inner side of left B-pillar, Non-accident-related deformation.

Configuration Information

Model Information

Model Name	Beijing Hyundai ix35 2018 2.0L Automatic two-wheel drive Zhiyong · Enjoy Edition
Launch Date	2017.11

Basic parameters

Vehicle Class	Compact SUV
Energy Type	Gasoline
Maximum Power (kW)	118
Maximum Torque (N·m)	193
Transmission	6-speed manual integration
Body Type	SUV
Engine	2.0L 160 horsepower L4
Dimensions (L×W×H) (mm)	4435*1850*1715
Official 0-100 km/h Acceleration (s)	-
Top Speed (km/h)	186
Curb Weight (kg)	1420
Maximum Gross Weight (kg)	-
NEDC Combined Fuel Consumption (L/100km)	7.4

engine

Engine Model	-
Displacement (mL)	1999
Displacement (L)	2.0
Induction Type	Natural aspiration
Cylinder Arrangement	L

engine (continued)

Number of Cylinders	4
Valves per Cylinder	4
Valve Train	DOHC
Maximum Power (PS)	160
Max Power Speed (rpm)	6500
Max Torque Speed (rpm)	4800
Maximum net power (kW)	-
Fuel Grade	92.
Fuel Delivery System	Multi-point EFI
Cylinder Head Material	Aluminum alloy
Cylinder Block Material	Aluminum alloy
Engine-specific technologies	D-CVVT

Screen/System

Central control color screen	<ul style="list-style-type: none">• Touch LCD screen
Infotainment Screen Size	<ul style="list-style-type: none">•9.6 inches
Bluetooth/In-car Phone	<ul style="list-style-type: none">•
Smartphone Integration/Mirroring	<ul style="list-style-type: none">• Support CarPlay;• Support CarLife

Body

Length (mm)	4435
Width (mm)	1850
Height (mm)	1715
Wheelbase (mm)	2640
Front Track (mm)	-
Rear Track (mm)	-
Ground Clearance (Fully Loaded) (mm)	180
Door Opening Type	-
Number of Doors	5
Number of Seats	5
Fuel Tank Capacity (L)	58
Trunk volume (L)	-
Drag Coefficient (Cd)	-

Gearbox

Gearbox (continued)

Abbreviation	6-speed manual integration
Number of Gears	6
Transmission Type	Automatic Transmission with Manual Mode (AT)

Chassis steering

Drive Type	Front-engine, Front-wheel drive (FF)
Front Suspension Type	MacPherson independent suspension
Rear Suspension Type	Multi-link independent suspension
Power Steering Type	Electric power assistance
Vehicle structure	bearing type

Seat Configuration

Seat Material	• Imitation leather
Main seat adjustment	• Front and rear adjustment; • Backrest adjustment; • Height adjustment (4-way)
Co-seat adjustment method	• Front and rear adjustment; • Backrest adjustment
Electric adjustment of driver's seat and passenger seat	Main/Deputy-
Front seat functions	○ Heating
Front passenger seat rear adjustable buttons	-
Rear seat folding	• Proportional down
Front/rear center armrest	Front •/Rear •
Rear cup holder	•

Active safety

Anti-lock Braking System (ABS)	•
Electronic Brakeforce Distribution (EBD/CBC)	•
Brake Assist System (EBA/BAS/BA)	•
Traction Control System (ASR/TCS/TRC)	•
Electronic Stability Control (ESC/ESP/DSC)	•
Tire Pressure Monitoring System (TPMS)	• Tire pressure display

Active safety (continued)

Seat Belt Reminder	• Front row
ISOFIX Child Seat Anchors	•
Lane Departure Warning System (LDWS)	○
Autonomous Emergency Braking (AEB)	○
Driver Fatigue Detection	○

Air conditioning/refrigerator

Air conditioning temperature control method	• Manual air conditioning; ○ Automatic air conditioning
Rear Independent Climate Control	-
Rear seat air vents	•
Temperature zone control	-
Car air purifier	-
In-cabin PM2.5 Filter	-

Passive safety

Driver/passenger airbag	Main •/Deputy •
Front/rear side airbags	Front •/Rear-
Front/rear head airbags (curtain airbags)	-

Wheel brake

Front Brake Type	Ventilation disc
Rear Brake Type	Disc
Parking brake type	handbrake
Front Tire Size	225/55 R18
Rear Tire Size	225/55 R18
Spare Tire Size	Not full-size

Audio/Interior Lighting

Number of speakers	• 4 speakers
---------------------------	--------------

Driving functions

Navigation traffic information display	-
Lane assist	-
Lane Keeping Assist System	-

Driving functions (continued)

Satellite navigation system	○
Parking Assist	-

Exterior lighting

Low beam light source	• Halogen
High beam light source	• Halogen
LED daytime running lights	•
Adaptive high and low beam	-
Automatic headlights	•
Front fog lights	• Halogen
Height-adjustable headlights	•
Headlight Delay Off	•
Turn signal lamp	•

Exterior mirrors

Exterior mirror function	• Electric adjustment; • Electric folding; • Mirror heating
---------------------------------	---

Appearance/anti-theft

Rim material	• Aluminum alloy
Electric trunk	-
Electronic engine immobilizer	•
Central locking system in the car	•
Key Type	• Remote key
Keyless start system	•
Keyless entry function	• Driving position
Roof rack	•

Skylight/Glass

Sunroof Type	• Electric sunroof
Front/rear electric windows	Front •/Rear •
One-touch window lifting function	• Driving position
Window anti-pinch function	•

Skylight/Glass (continued)

Car makeup mirror	• Driver's side interior light
Rear wiper	•

Interior and exterior color

Exterior Color	Polar, White: #F5F5FA; Walnut Brown: #99684A; Phantom Black: #010101; Glamorous Orange: #D84C2A; Enchanting Red: #6E2A29; Mystic Gray: #8C8C8C; Midnight Blue: #2F3B47; Chinese Red: #C21C1C; Brilliant Yellow: #FDCF31
Interior Color	Black:#000000, Black/Red:#000000/#B72123, Black, Brown, #000000/#B87259

Steering wheel/interior mirror

Steering Wheel Material	• Cortex
Steering wheel position adjustment	• Manual up and down adjustment
Multi-function steering wheel	•
Heated Steering Wheel	-
Steering wheel memory	-
Trip computer display screen	• Color
Full LCD instrument panel	-
Interior rearview mirror function	• Manual anti-glare

Intelligent configuration

Connected Car Services	<input type="radio"/>
OTA Updates	-

Driving Control

Driving mode switch	• Sport; • Economy; • Standard/Comfort
Automatic parking	-
Steep slope descent	•
Hill start assist	•
Engine start-stop technology	<input type="radio"/>

Driving Hardware

Front/rear parking radar	Front-/Rear •
---------------------------------	---------------

Driving Hardware (continued)

Driving Assistance Camera System	• Reversing image
---	-------------------

In-car charging

Multimedia/charging port	•USB
Number of USB/Type-C ports	• 1 in the front row
Luggage compartment 12V power socket	•

"●" = Standard equipment

"-" = Not available

"○" = Optional equipment.

Note: These are Chinese market vehicles. Warranty coverage is not available outside of China.