

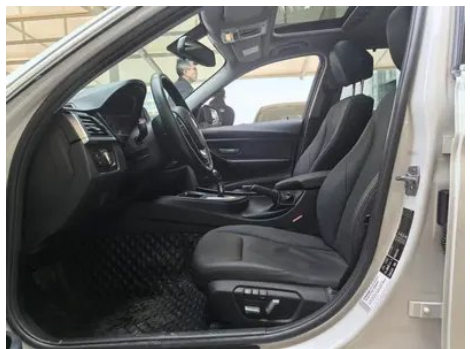
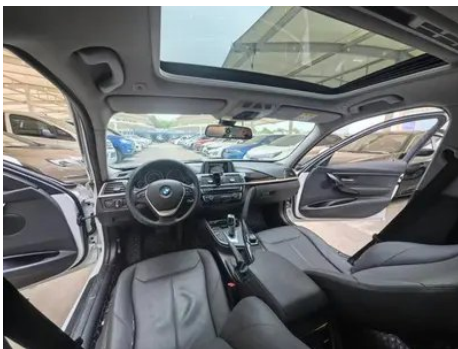
Vehicle Detail Report

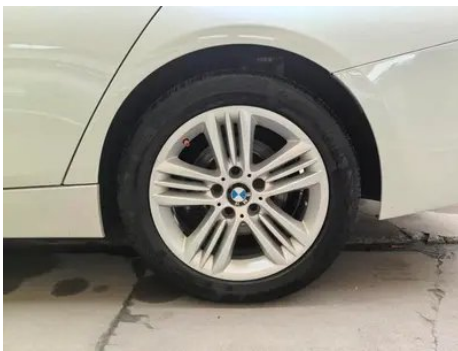
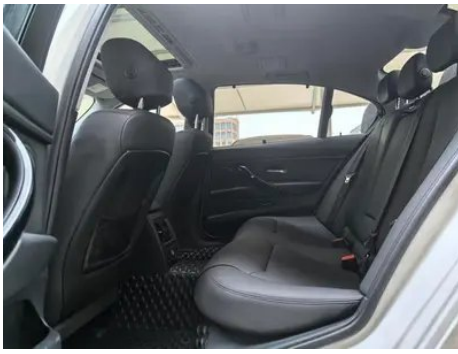
BMW 3 Series 2017 320Li xDrive Fashionable

Basic Information

Brand	BMW
Mileage	120,000 km
Color	White
First Registration	2017-02-01
Transfer Count	1

Vehicle Images





Vehicle Condition

1. Left rocker panel, Scratch damage. 2. Inner side of left B-pillar, Non-accident-related deformation. 3. Inner side of left C-pillar, Dent. 4. Inner side of right B-pillar, Scratch. 5. Driver's seat rails and frame, Signs of removal. 6. Front passenger seat rails and frame, Signs of removal. 7. Right rear quarter panel, Paint chip, Deformation.

Configuration Information

Model Information

Model Name	BMW 3 Series 2017 320Li xDrive Fashionable
Launch Date	2016.09

Basic parameters

Vehicle Class	Mid-size car
Energy Type	Gasoline

Basic parameters (continued)

Maximum Power (kW)	135
Maximum Torque (N·m)	270
Transmission	8-gear manual integration
Body Type	Sedan
Engine	2.0L 184 hp L4
Dimensions (L×W×H) (mm)	4753*1811*1458
Official 0-100 km/h Acceleration (s)	8.4
Top Speed (km/h)	230
Curb Weight (kg)	-
Maximum Gross Weight (kg)	-
NEDC Combined Fuel Consumption (L/100km)	6.7

engine

Engine Model	B48B20C
Displacement (mL)	1998
Displacement (L)	2.0
Induction Type	Turbocharging
Cylinder Arrangement	L
Number of Cylinders	4
Valves per Cylinder	4
Valve Train	DOHC
Maximum Power (PS)	184
Max Power Speed (rpm)	5000-6500
Max Torque Speed (rpm)	1350-4600
Maximum net power (kW)	-
Fuel Grade	95.
Fuel Delivery System	Direct injection
Cylinder Head Material	Aluminum alloy
Cylinder Block Material	Aluminum alloy

Screen/System

Central control color screen	•
Infotainment Screen Size	•6.5 inches; ○8.8 inches

Screen/System (continued)

Bluetooth/In-car Phone	•
In-car CD/DVD Player	• Single disc CD

Body

Length (mm)	4753
Width (mm)	1811
Height (mm)	1458
Wheelbase (mm)	2920
Front Track (mm)	-
Rear Track (mm)	-
Door Opening Type	-
Number of Doors	4
Number of Seats	5
Fuel Tank Capacity (L)	60
Trunk volume (L)	480
Drag Coefficient (Cd)	-

Gearbox

Abbreviation	8-gear manual integration
Number of Gears	8
Transmission Type	Automatic Transmission with Manual Mode (AT)

Chassis steering

Drive Type	Front-engine, All-wheel drive (F-AWD)
Four-wheel drive	Timely four-wheel drive
Central differential structure	Multi-plate clutch
Front Suspension Type	Dual-ball-joint MacPherson independent suspension
Rear Suspension Type	Multi-link independent suspension
Power Steering Type	Electric power assistance
Vehicle structure	bearing type

Seat Configuration

Seat Material	○ Genuine leather (USD 1,838); • Faux leather
----------------------	---

Seat Configuration (continued)

Main seat adjustment	• Front and rear adjustment; • Backrest adjustment; • Height adjustment (2-way); ○ Height adjustment (4-way)
Co-seat adjustment method	• Front and rear adjustment; • Backrest adjustment
Electric adjustment of driver's seat and passenger seat	Main •/Deputy •
Front seat functions	• Heating
Electric seat memory function	•
Front passenger seat rear adjustable buttons	•
Rear seat folding	• Proportional down
Front/rear center armrest	Front •/Rear •
Rear cup holder	•

Active safety

Anti-lock Braking System (ABS)	•
Electronic Brakeforce Distribution (EBD/CBC)	•
Brake Assist System (EBA/BAS/BA)	•
Traction Control System (ASR/TCS/TRC)	•
Electronic Stability Control (ESC/ESP/DSC)	•
Tire Pressure Monitoring System (TPMS)	•
Seat Belt Reminder	•
ISOFIX Child Seat Anchors	•
Lane Departure Warning System (LDWS)	-
Autonomous Emergency Braking (AEB)	-
Driver Fatigue Detection	-
Emergency Call System (eCall)	•

Air conditioning/refrigerator

Air conditioning/refrigerator (continued)

Air conditioning temperature control method	• Automatic air conditioning
Rear Independent Climate Control	-
Rear seat air vents	•
Temperature zone control	•
Car air purifier	-
In-cabin PM2.5 Filter	-

Passive safety

Driver/passenger airbag	Main •/Deputy •
Front/rear side airbags	Front •/Rear-
Front/rear head airbags (curtain airbags)	Front •/Rear •
Run-flat tires	•

Wheel brake

Front Brake Type	Ventilation disc
Rear Brake Type	Ventilation disc
Parking brake type	handbrake
Front Tire Size	225/50 R17
Rear Tire Size	225/50 R17
Spare Tire Size	None

Audio/Interior Lighting

Speaker Brand Name	○ Harman/Kardon Harman Kardon (USD 1,426)
Number of speakers	○≥12 speakers; •6-7 speakers
Interior ambient lighting	•

Driving functions

Navigation traffic information display	-
Lane assist	-
Lane Keeping Assist System	-
Cruise control system	○ Cruise control; ○ Adaptive cruise control
Satellite navigation system	○
Parking Assist	○

Exterior lighting

Low beam light source	•LED
High beam light source	•LED
LED daytime running lights	•
Adaptive high and low beam	-
Automatic headlights	•
Front fog lights	•
Height-adjustable headlights	•
Headlight Delay Off	-
Turn headlights	○

Exterior mirrors

Exterior mirror function	• Electric adjustment; • Electric folding; • Rearview mirror memory; • Rearview mirror heating; • Automatic anti-glare
---------------------------------	--

Appearance/anti-theft

Rim material	• Aluminum alloy
Electronic engine immobilizer	•
Central locking system in the car	•
Key Type	• Remote key
Keyless start system	•
Keyless entry function	○
Hands-free Trunk	○

Skylight/Glass

Sunroof Type	• Electric sunroof
Front/rear electric windows	Front •/Rear •
One-touch window lifting function	• Full vehicle
Window anti-pinch function	•
Car makeup mirror	•
Rear wiper	-
Rain sensor wiper function	•

Skylight/Glass (continued)

Rear side window sunshades	•
-----------------------------------	---

Interior and exterior color

Exterior Color	Snow Mountain White #FAFAFA Gem Green #242224 Glacier Silver #949A9C Havana Ash #48413B cashmi silver #C6C1B4 Melbourne Red #610303 Ore White #E7E7E7 chestnut copper brown #8A411B
Interior Color	Black:#000000; Black/Veneto Beige:#000000/#CDB589; Pearl Ostel White:#DEDEDE

Steering wheel/interior mirror

Steering Wheel Material	• Cortex
Steering wheel position adjustment	• Manual up and down front and rear adjustment
Multi-function steering wheel	•
Heated Steering Wheel	○
Steering wheel memory	-
Trip computer display screen	•
Full LCD instrument panel	-
Interior rearview mirror function	• Automatic anti-glare
HUD Head Up Digital Display	○

Intelligent configuration

Connected Car Services	○
OTA Updates	-

Driving Control

Automatic parking	-
Hill start assist	•
Variable steering ratio	○
Engine start-stop technology	•

Driving Hardware

Front/rear parking radar	Front •/Rear •
Driving Assistance Camera System	• Reversing image; ○ 360-degree panoramic image

In-car charging

In-car charging (continued)

Multimedia/charging port

•USB;•AUX

"●" = Standard equipment

"-" = Not available

"○" = Optional equipment.

Note: These are Chinese market vehicles. Warranty coverage is not available outside of China.