

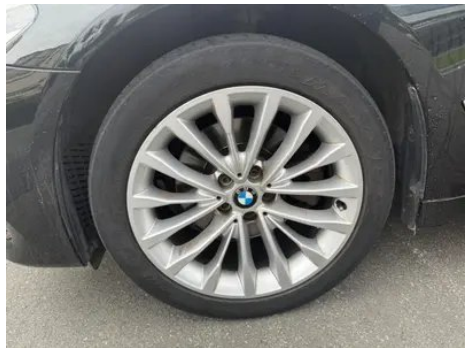
Vehicle Detail Report

BMW 5 Series 2019 525Li Luxury Set

Basic Information

| | |
|--------------------|-------------------|
| Brand | BMW |
| Mileage | 98,000 km |
| Color | Black |
| First Registration | 2019-06-01 |
| Transfer Count | 0 |

Vehicle Images





华晨宝马汽车有限公司制造
 制造国：中国 LBVKY110XKSS50498
 品牌：宝马(BMW)牌 发动机排量：1998 mL
 整车型号：BMW7201RM
 发动机型号：B48B20C 制造年月：2019-03
 最大允许总质量：2225 kg 乘坐人数：5
 发动机最大净功率：135 kW
 最大允许牵引质量： kg



Vehicle Condition

1. Right rear quarter panel, Body panel repair.

Configuration Information

Model Information

| | |
|--------------------|------------------------------------|
| Model Name | BMW 5 Series 2019 525Li Luxury Set |
| Launch Date | 2018.12 |

Basic parameters

| | |
|---|---------------------------|
| Vehicle Class | Mid-size and large cars |
| Energy Type | Gasoline |
| Maximum Power (kW) | 135 |
| Maximum Torque (N·m) | 290 |
| Transmission | 8-gear manual integration |
| Body Type | Sedan |
| Engine | 2.0L 184 hp L4 |
| Dimensions (L×W×H) (mm) | 5087*1868*1500 |
| Official 0-100 km/h Acceleration (s) | - |
| Top Speed (km/h) | - |
| Curb Weight (kg) | 1710 |
| Maximum Gross Weight (kg) | - |
| NEDC Combined Fuel Consumption (L/100km) | 6.5 |

engine

| | |
|-----------------------------|---------------|
| Engine Model | B48B20C |
| Displacement (mL) | 1998 |
| Displacement (L) | 2.0 |
| Induction Type | Turbocharging |
| Cylinder Arrangement | L |

engine (continued)

| | |
|--------------------------------|------------------|
| Number of Cylinders | 4 |
| Valves per Cylinder | 4 |
| Valve Train | DOHC |
| Maximum Power (PS) | 184 |
| Max Power Speed (rpm) | 5000-6500 |
| Max Torque Speed (rpm) | 1350-4250 |
| Maximum net power (kW) | 135 |
| Fuel Grade | 95. |
| Fuel Delivery System | Direct injection |
| Cylinder Head Material | Aluminum alloy |
| Cylinder Block Material | Aluminum alloy |
| Engine layout | Longitudinal |

Screen/System

| | |
|--|--|
| Central control color screen | <ul style="list-style-type: none">• Touch LCD screen |
| Infotainment Screen Size | <ul style="list-style-type: none">• 10.25 inches |
| Bluetooth/In-car Phone | <ul style="list-style-type: none">• |
| Smartphone Integration/ Mirroring | <ul style="list-style-type: none">• Apple CarPlay support |
| Voice recognition control system | <ul style="list-style-type: none">• Multimedia system;• Navigation;• Telephone |
| In-car CD/DVD Player | <ul style="list-style-type: none">• Single disc CD |
| Gesture Control | ○(USD 368) |

Body

| | |
|-------------------------------|------|
| Length (mm) | 5087 |
| Width (mm) | 1868 |
| Height (mm) | 1500 |
| Wheelbase (mm) | 3108 |
| Front Track (mm) | - |
| Rear Track (mm) | - |
| Door Opening Type | - |
| Number of Doors | 4 |
| Number of Seats | 5 |
| Fuel Tank Capacity (L) | 68 |
| Trunk volume (L) | - |

Body (continued)

| | |
|------------------------------|---|
| Drag Coefficient (Cd) | - |
|------------------------------|---|

Gearbox

| | |
|--------------------------|--|
| Abbreviation | 8-gear manual integration |
| Number of Gears | 8 |
| Transmission Type | Automatic Transmission with Manual Mode (AT) |

Chassis steering

| | |
|------------------------------|--|
| Drive Type | Front-engine, Rear-wheel drive (FR) |
| Front Suspension Type | Double wishbone independent suspension |
| Rear Suspension Type | Multi-link independent suspension |
| Power Steering Type | Electric power assistance |
| Vehicle structure | bearing type |

Seat Configuration

| | |
|--|--|
| Seat Material | ○ Genuine leather (USD 1,882); • Faux leather |
| Main seat adjustment | • Front and rear adjustment; • Backrest adjustment; • Height adjustment (4-way);○ Lumbar support (4-way) |
| Co-seat adjustment method | • Front and rear adjustment; • Backrest adjustment; • Height adjustment (4-way);○ Lumbar support (4-way) |
| Electric adjustment of driver's seat and passenger seat | Main •/Deputy • |
| Front seat functions | ○ Heating (USD 441) |
| Electric seat memory function | • Driving position |
| Front passenger seat rear adjustable buttons | - |
| Front/rear center armrest | Front •/Rear • |
| Rear cup holder | • |

Active safety

| | |
|---|---|
| Anti-lock Braking System (ABS) | • |
| Electronic Brakeforce Distribution (EBD/CBC) | • |
| Brake Assist System (EBA/BAS/BA) | • |

Active safety (continued)

| | |
|---|-----------------------|
| Traction Control System (ASR/TCS/TRC) | • |
| Electronic Stability Control (ESC/ESP/DSC) | • |
| Tire Pressure Monitoring System (TPMS) | • Tire pressure alarm |
| Seat Belt Reminder | • Front row |
| ISOFIX Child Seat Anchors | • |
| Lane Departure Warning System (LDWS) | - |
| Autonomous Emergency Braking (AEB) | - |
| Driver Fatigue Detection | • |
| Emergency Call System (eCall) | • |

Air conditioning/refrigerator

| | |
|--|------------------------------|
| Air conditioning temperature control method | • Automatic air conditioning |
| Rear Independent Climate Control | - |
| Rear seat air vents | • |
| Temperature zone control | • |
| Car air purifier | - |
| In-cabin PM2.5 Filter | - |

Passive safety

| | |
|--|-----------------|
| Driver/passenger airbag | Main •/Deputy • |
| Front/rear side airbags | Front •/Rear- |
| Front/rear head airbags (curtain airbags) | Front •/Rear • |
| Run-flat tires | • |
| Passive pedestrian protection | • |

Wheel brake

| | |
|---------------------------|--------------------|
| Front Brake Type | Ventilation disc |
| Rear Brake Type | Ventilation disc |
| Parking brake type | Electronic Parking |
| Front Tire Size | 245/45 R18 |

Wheel brake (continued)

| | |
|------------------------|------------|
| Rear Tire Size | 245/45 R18 |
| Spare Tire Size | None |

Audio/Interior Lighting

| | |
|----------------------------------|--|
| Speaker Brand Name | <input type="radio"/> Harman/Kardon Harman Kardon |
| Number of speakers | <input type="radio"/> ≥ 12 horns; <input type="radio"/> 8-9 horns |
| Interior ambient lighting | <input type="radio"/> 11 colors |

Driving functions

| | |
|---|--------------------------------------|
| Navigation traffic information display | <input type="radio"/> |
| Lane assist | - |
| Lane Keeping Assist System | - |
| Cruise control system | <input type="radio"/> Cruise control |
| Satellite navigation system | <input type="radio"/> |
| Parking Assist | <input type="radio"/> (USD 294) |

Exterior lighting

| | |
|-------------------------------------|---------------------------|
| Low beam light source | <input type="radio"/> LED |
| High beam light source | <input type="radio"/> LED |
| LED daytime running lights | <input type="radio"/> |
| Adaptive high and low beam | <input type="radio"/> |
| Automatic headlights | <input type="radio"/> |
| Front fog lights | <input type="radio"/> LED |
| Height-adjustable headlights | <input type="radio"/> |
| Headlight Delay Off | <input type="radio"/> |
| Turn headlights | <input type="radio"/> |
| Turn signal lamp | <input type="radio"/> |

Exterior mirrors

| | |
|---------------------------------|---|
| Exterior mirror function | <input type="radio"/> Electric adjustment; <input type="radio"/> Electric folding; <input type="radio"/> Rearview mirror memory; <input type="radio"/> Rearview mirror heating; <input type="radio"/> Automatic downturning when reversing; <input type="radio"/> Automatic folding when locked; <input type="radio"/> Automatic anti-glare |
|---------------------------------|---|

Appearance/anti-theft

| | |
|---------------------|--------------------------------------|
| Rim material | <input type="radio"/> Aluminum alloy |
|---------------------|--------------------------------------|

Appearance/anti-theft (continued)

| | |
|--|--|
| Electric trunk | <ul style="list-style-type: none">• |
| Electronic engine immobilizer | <ul style="list-style-type: none">• |
| Central locking system in the car | <ul style="list-style-type: none">• |
| Key Type | <ul style="list-style-type: none">• Remote key |
| Keyless start system | <ul style="list-style-type: none">• |
| Keyless entry function | <input type="radio"/> Front row |
| Hands-free Trunk | <input type="radio"/> |
| Active closed grille | <ul style="list-style-type: none">• |

Skylight/Glass

| | |
|--|---|
| Sunroof Type | <ul style="list-style-type: none">• Electric sunroof |
| Front/rear electric windows | Front <input checked="" type="checkbox"/> /Rear <input checked="" type="checkbox"/> |
| One-touch window lifting function | <ul style="list-style-type: none">• Full vehicle |
| Window anti-pinch function | <ul style="list-style-type: none">• |
| Car makeup mirror | <ul style="list-style-type: none">• Driver's side ambient light;• Passenger-side ambient light;• Rear-row ambient light |
| Rear wiper | - |
| Rain sensor wiper function | <ul style="list-style-type: none">• Rainfall-sensing |

Interior and exterior color

| | |
|-----------------------|--|
| Exterior Color | Gem Green #242224 Brazil Brown #45403D Burgundy red #600001 Platinum Silver #605F57 Hookaro beige #A6988C cashmi silver #C6C1B4 Ore White #E7E7E7 Snow Mountain White #FAFAFA Moonlight Silver #D8CAB4 |
| Interior Color | Black Mocha color #000000 #423534 Black Canberra beige #000000 #EEDDC4 Black #000000 Black Cognac color #000000 #78593D |

Steering wheel/interior mirror

| | |
|---|--|
| Steering Wheel Material | <ul style="list-style-type: none">• Leather |
| Steering wheel position adjustment | <ul style="list-style-type: none">• Electric up and down front and rear adjustment |

Steering wheel/interior mirror (continued)

| | |
|--|------------------------|
| Multi-function steering wheel | • |
| Heated Steering Wheel | - |
| Steering wheel memory | • |
| Trip computer display screen | • Color |
| Full LCD instrument panel | • |
| Interior rearview mirror function | • Automatic anti-glare |

Intelligent configuration

| | |
|-------------------------------|---|
| Connected Car Services | • |
| OTA Updates | - |

Driving Control

| | |
|-------------------------------------|--|
| Driving mode switch | • Sport; • Economy; • Standard/Comfort |
| Automatic parking | • |
| Hill start assist | • |
| Engine start-stop technology | • |

Driving Hardware

| | |
|---|---|
| Front/rear parking radar | Front •/Rear • |
| Driving Assistance Camera System | • Reversing image; ○ 360-degree panoramic image |

In-car charging

| | |
|--|----------------------|
| Multimedia/charging port | •USB |
| Number of USB/Type-C ports | • 1 in the front row |
| Mobile phone wireless charging function | ○ Front row |

Optional Package

| | |
|-------------------------|--|
| Optional Package | Winter suit (3000 yuan Contains Front seat heating function) Comfortable Suit (10000 yuan Contains Comfort entry function Driver's exterior rearview mirror with automatic anti-glare function Enhanced Park Assist (Including panoramic camera) Innovative Suit (10000 yuan Contains LED Follow-up control headlight Automatic high beam control) |
|-------------------------|--|

"●" = Standard equipment

"□" = Not available

"○" = Optional equipment.

Note: These are Chinese market vehicles. Warranty coverage is not available outside of China.